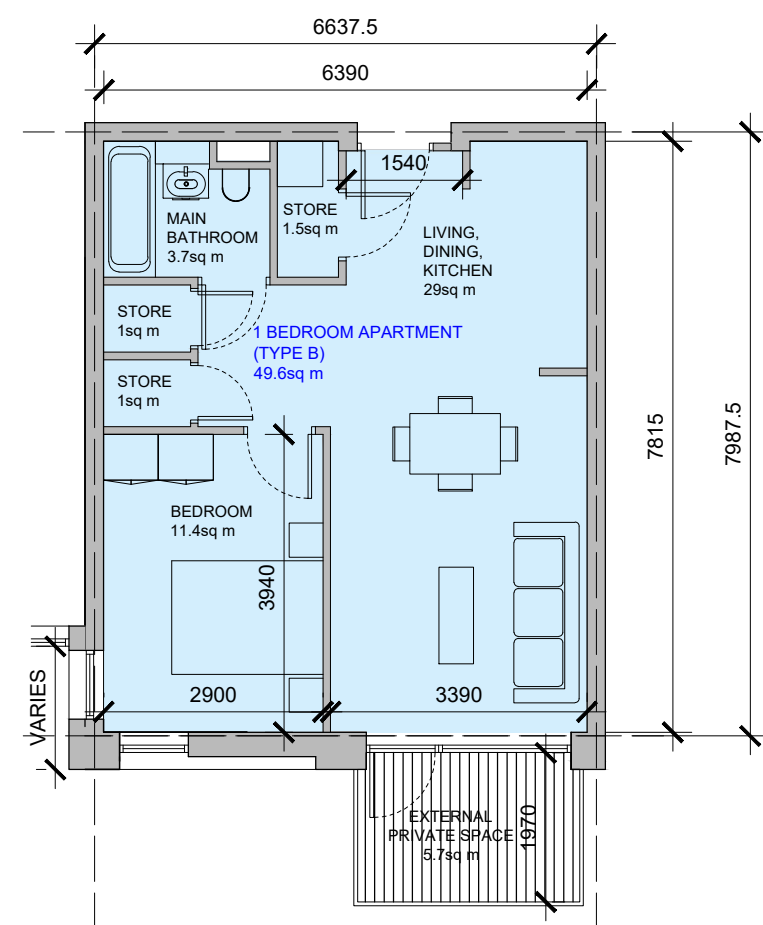
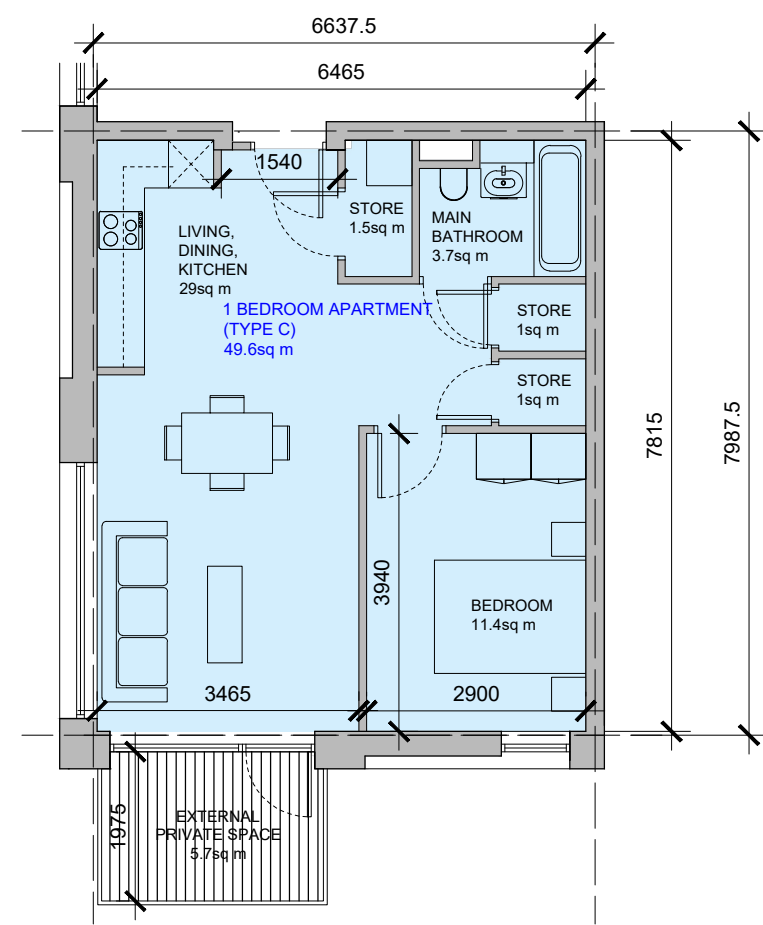


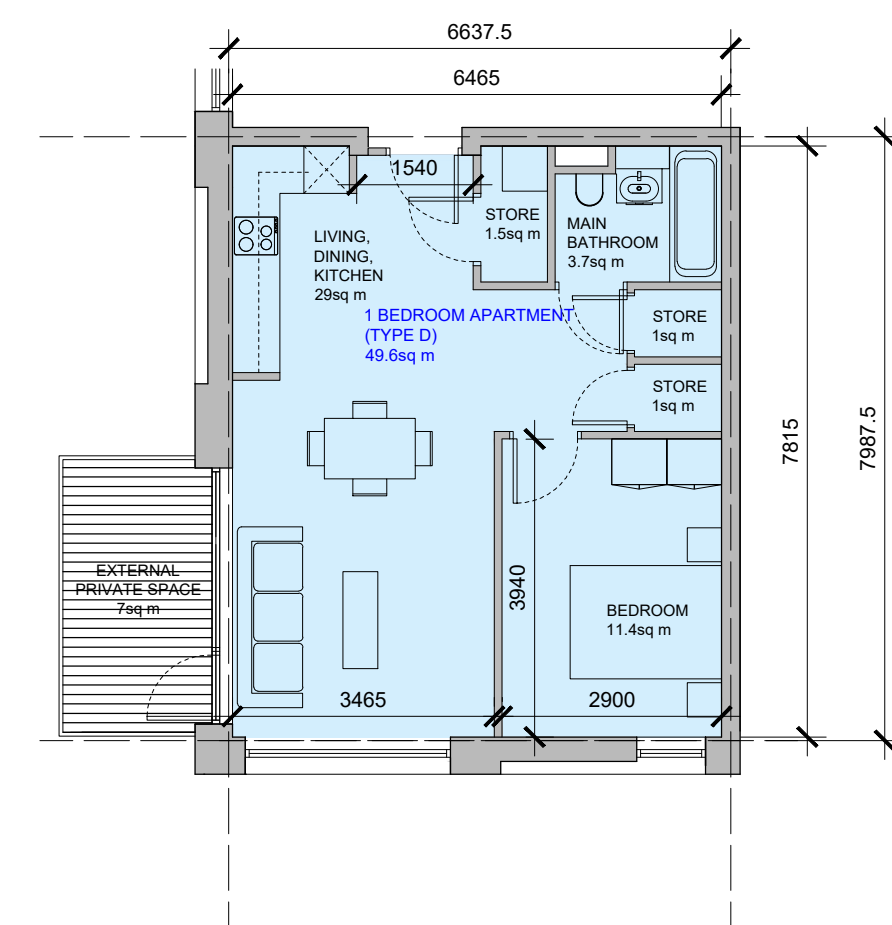
**1 BEDROOM 2 PERSON APARTMENT
TYPE A**
Area 49.6sq m
SCALE 1:100



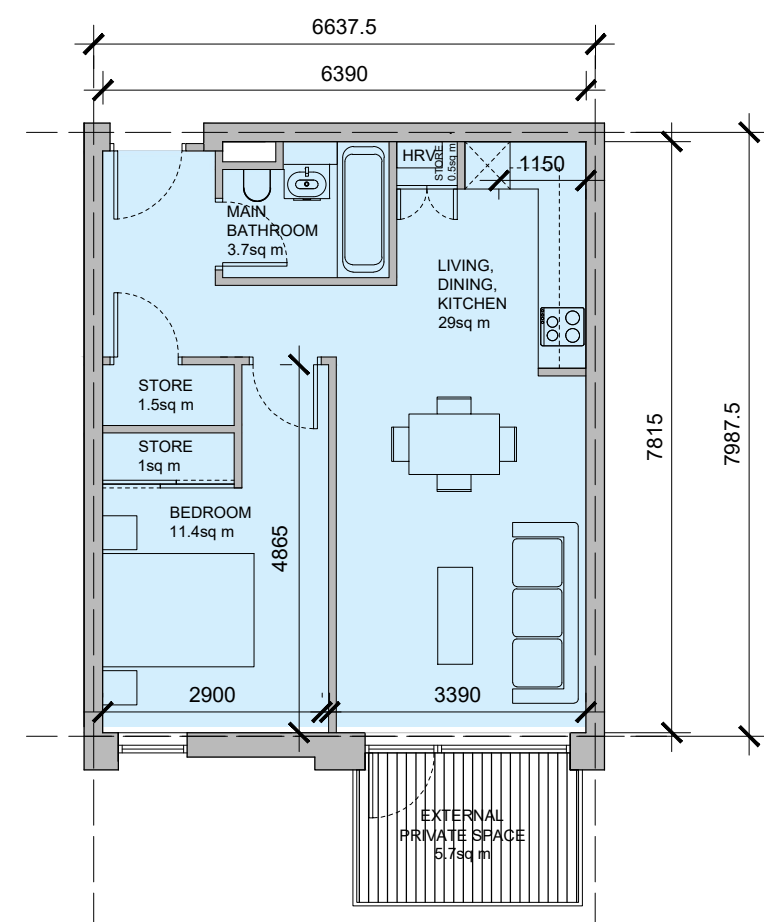
**1 BEDROOM 2 PERSON APARTMENT
TYPE B**
Area 49.6sq m
SCALE 1:100



**1 BEDROOM 2 PERSON APARTMENT
TYPE C**
Area 49.6sq m
SCALE 1:100



**1 BEDROOM 2 PERSON APARTMENT
TYPE D**
Area 49.6sq m
SCALE 1:100



**1 BEDROOM 2 PERSON APARTMENT
TYPE E**
Area 49.6sq m
SCALE 1:100

Notes:
DO NOT SCALE FROM THIS DRAWING. USE FIGURED DIMENSIONS IN ALL CASES.
VERIFY DIMENSIONS ON SITE AND REPORT ANY DISCREPANCIES TO THE ARCHITECTS IMMEDIATELY. THIS DRAWING IS TO BE READ IN CONJUNCTION WITH THE ARCHITECTS SPECIFICATION. © THIS DRAWING IS COPYRIGHT AND MAY ONLY BE REPRODUCED WITH THE ARCHITECTS PERMISSION.

Drawing Notes:

■ 1 Bed - 2 Person Apartment

Rev	Date	DRN	Description
P1	DEC 2019	RMM	PLANNING ISSUE

Reddy Architecture + Urbanism
Darity Mills,
Darity Road,
Dublin 6, D06 Y0E3,
T: +353 (0)1 4887000
W: www.reddyarchitecture.com
E: info@reddyarchitecture.com

Client Details:
Ballymore RCP Development Services Limited

Project Details:
Royal Canal Park Phase IV,
The Former Ormond Printworks,
Ratoath Road,
Dublin 11, D11 HY83

Drawing Title:
Proposed 1 Bed 2 Person Apartment Types

Job No	Date	Scale@A1
P19-007D	December 2019	As Shown
Status	Drawn By:	RMM
Planning	Checked By:	AL
Purpose	Checked By:	AL
Planning	Checked By:	AL
Drawing Number	Revision	
P19-007D_3.2_151	P1	