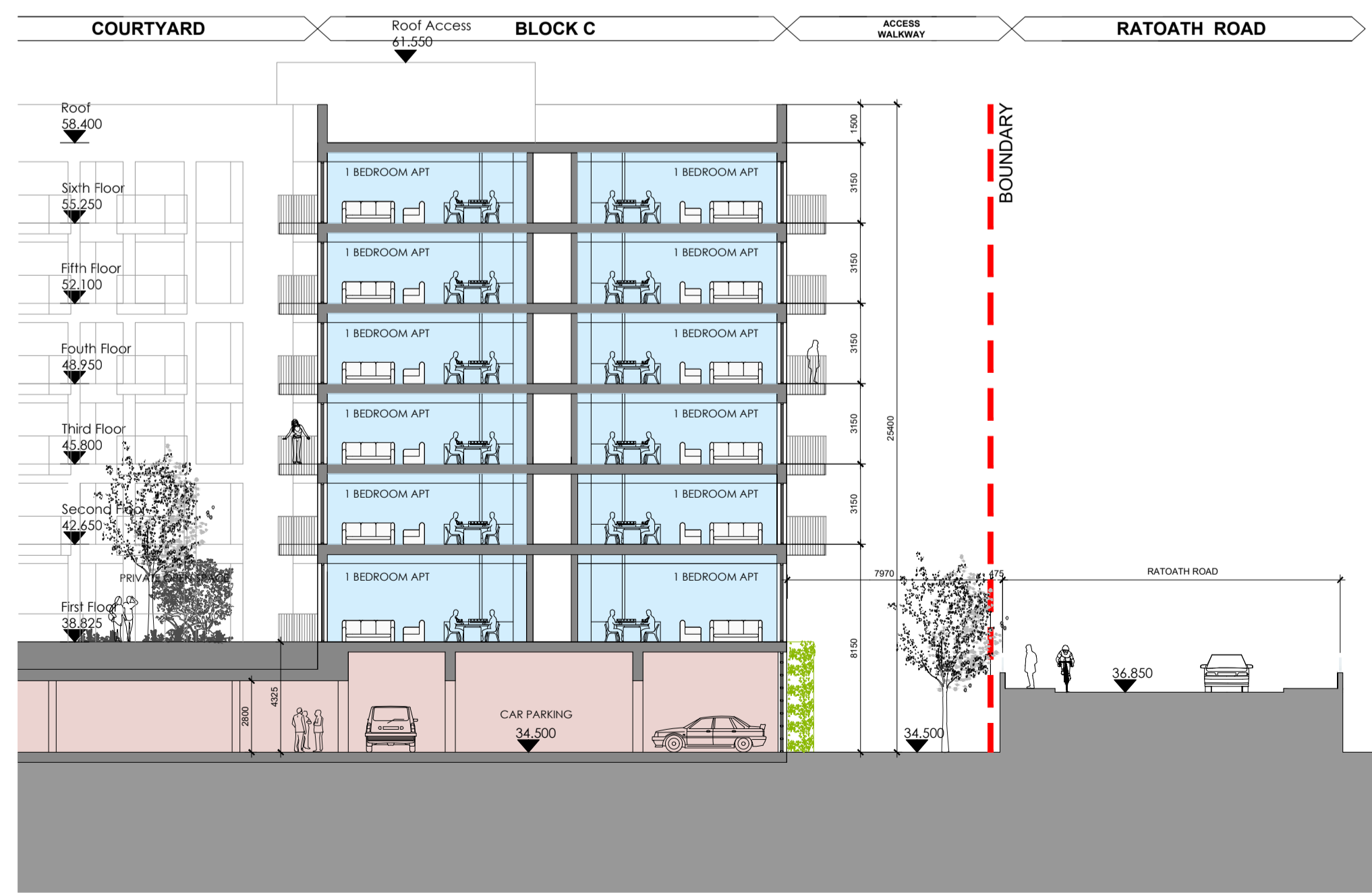


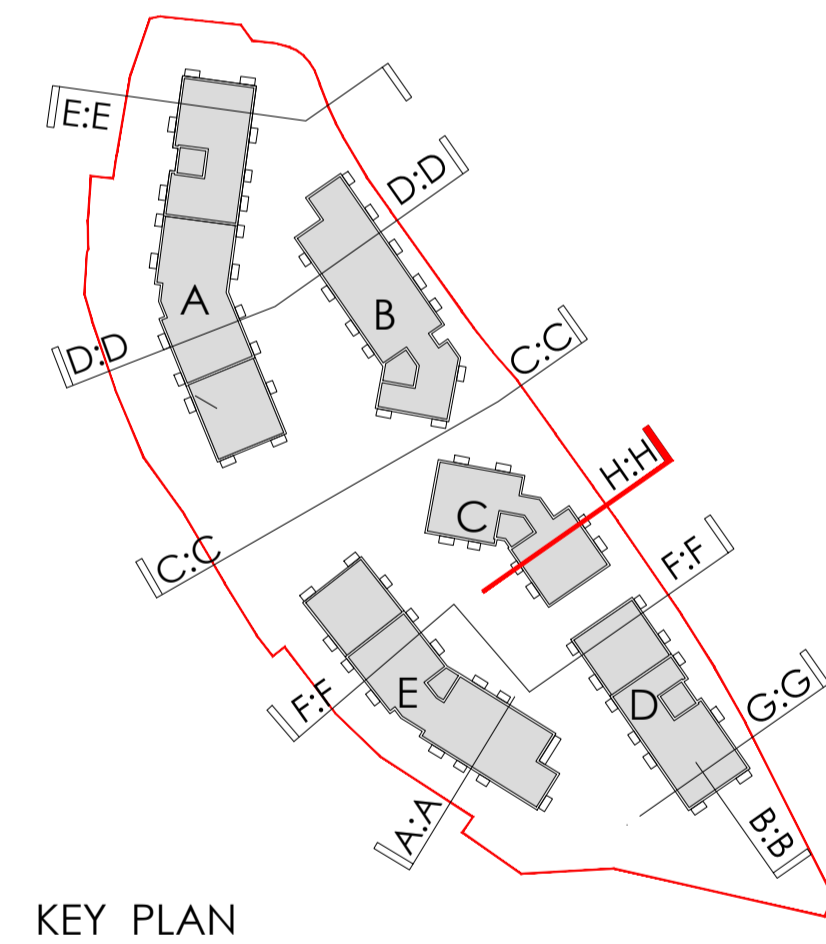
Notes:
 DO NOT SCALE FROM THIS DRAWING. USE FIGURED DIMENSIONS IN ALL CASES.
 VERIFY DIMENSIONS ON SITE AND REPORT ANY DISCREPANCIES TO THE ARCHITECTS IMMEDIATELY. THIS DRAWING TO BE READ IN CONJUNCTION WITH THE ARCHITECTS SPECIFICATION. © THIS DRAWING IS COPYRIGHT AND MAY ONLY BE REPRODUCED WITH THE ARCHITECTS PERMISSION.

Drawing Notes:

- 1 Bed - 2 Person Apartment
- 2 Bed - 4 Person Apartment (dumbbell unit)
- 2 Bed - 4 Person Apartment (corner unit)
- 2 Bed - 4 Person Apartment (Knuckle unit)
- Primary Health Care Centre
- Gym Incorporating Juice Bar
- Own Door Office
- Reception/Res Amenity
- Car Parking
- Private Open Space
- Public Open Space
- Plant
- Residents Additional Storage
- Bicycle Store
- Bin Store
- Sub Station



Section H - H
 Scale 1:200



KEY PLAN

Rev	Date	DRN	PJC	PLANNING ISSUE	Description
P1	DEC 2019				

reddyarchitecture
+urbanism

Reddy Architecture + Urbanism
 Darry Mills,
 Darry Road,
 Dublin 6, D06 Y0E3.
 T: +353 (0)1 4987000
 W: www.reddyarchitecture.com
 E: info@reddyarchitecture.com

Client Details:
 Ballymore RCP Development Services Limited

Project Details:
 Royal Canal Park Phase IV,
 The Former Ormond Printworks,
 Ratoath Road,
 Dublin 11, D11 HY83

Drawing Title:
 Section H - H

Job No P19-007D	Date December 2019	Scale@A1 1 : 200
Status Planning	Drawn By: PJC	Checked By: AL
Purpose Planning	Checked By: AL	Revision
Drawing Number P19-007D_3.2_303		P1