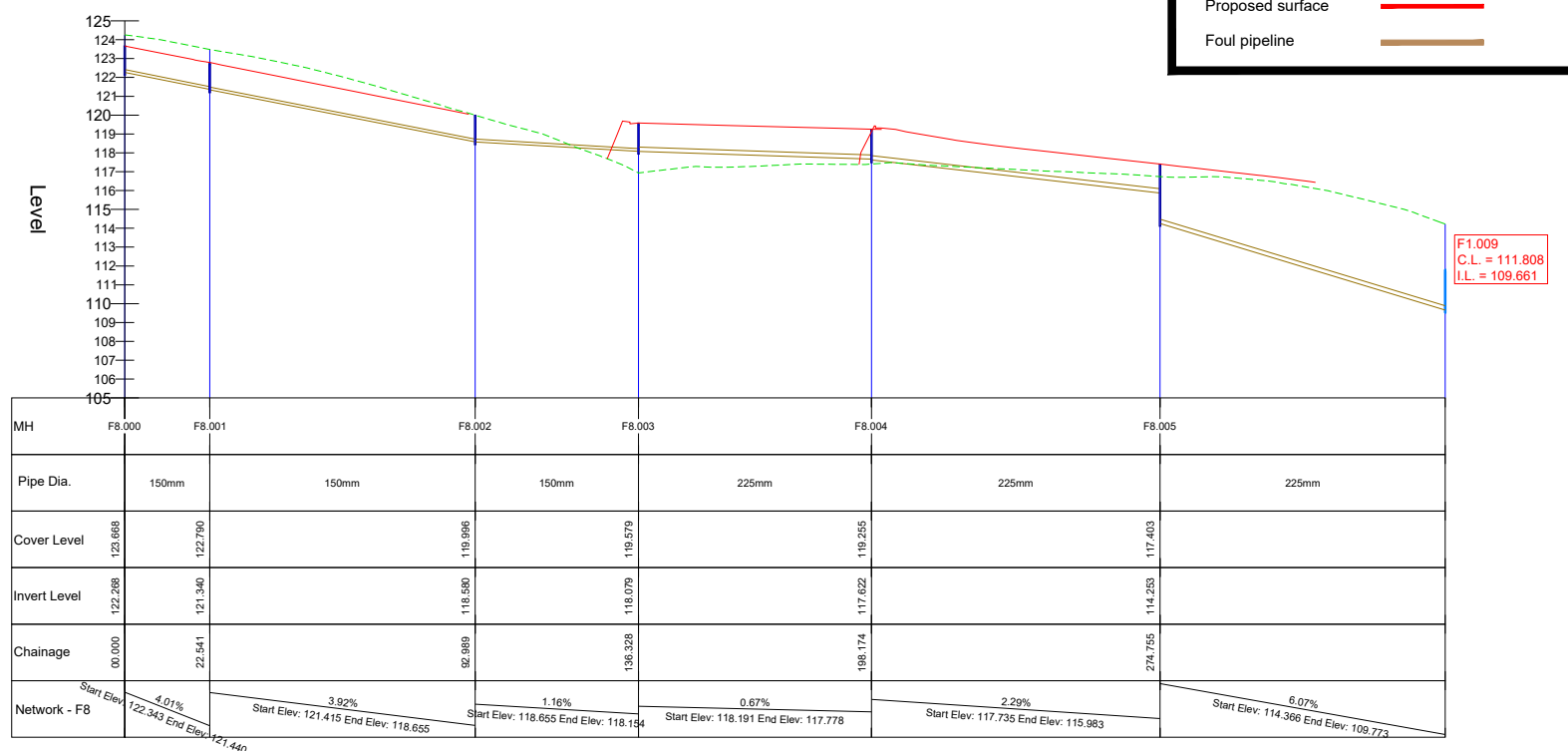


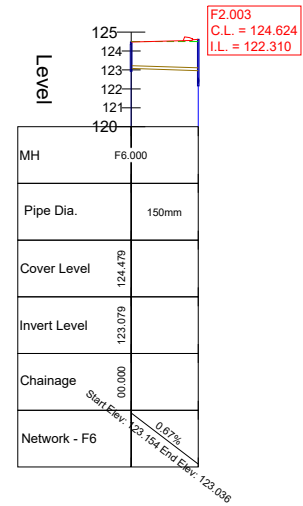
NOTES:
 All dimensions in metres.
 Do not scale from drawing.
 For any discrepancies found please consult with design office.
 This drawing should be read in conjunction with all contract drawings, documents and specifications.
 Gravity sewer pipe material to be concrete in accordance with Irish Water Wastewater Code of Practice, section 3.13.1

Existing ground -----
 Proposed surface -----
 Foul pipeline -----

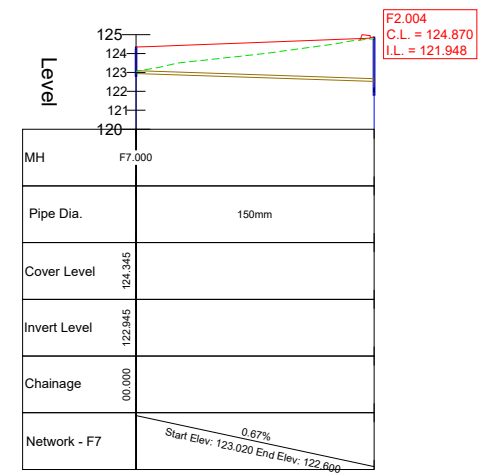
ALIGNMENT - F8 - LONGSECTION



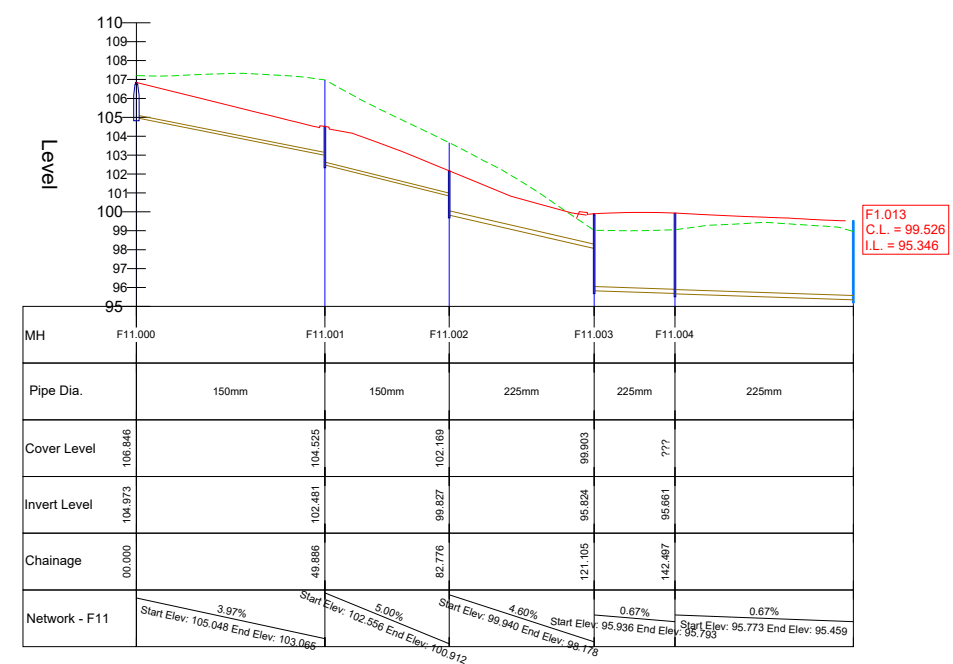
ALIGNMENT - F6 - LONGSECTION



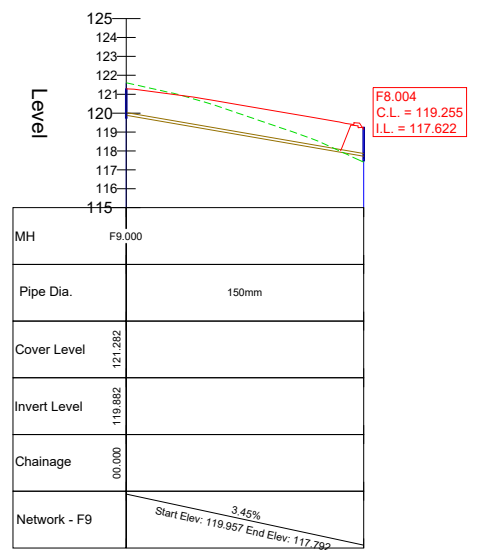
ALIGNMENT - F7 - LONGSECTION



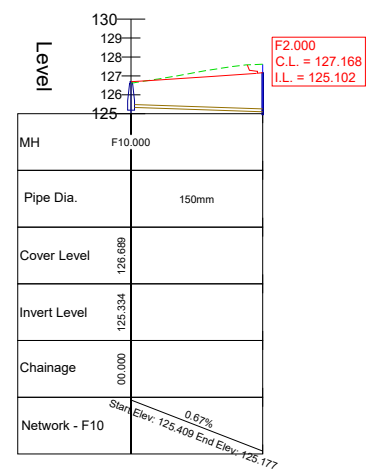
ALIGNMENT - F11 - LONGSECTION



ALIGNMENT - F9 - LONGSECTION



ALIGNMENT - F10 - LONGSECTION



Rev By	Date	Description

Drawing Status: PLANNING
NOT CERTIFIED FOR CONSTRUCTION

Project Title: Longview Estate Development

Drawing Title: Longsections - Foul

Client: Longview Estates Ltd.

M.H.L. & Associates Ltd. Consulting Engineers
 Carrig Mór House, 10 High Street, Douglas Road, Cork
 Tel: 021-4840214 Fax: 021-4840215 E-Mail: info@mhl.ie

Designed: SM	Drawn: SM	Checked: KM
---------------------	------------------	--------------------

Scale: H: 1:1000, V: 1:200 @ A1
 H: 1:2000, V: 1:400 @ A3

Date: Nov 2019

Job No: 17066HD	Drawing No: LHD_FLS_P04	Revision:
------------------------	--------------------------------	------------------