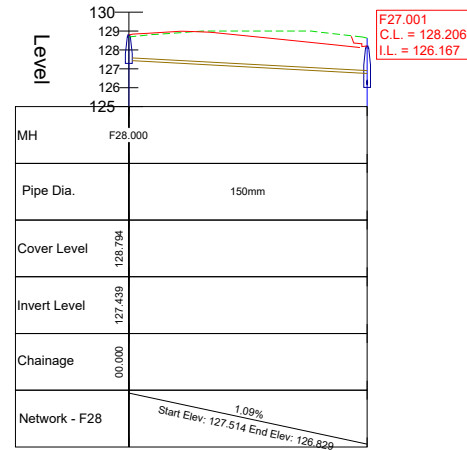
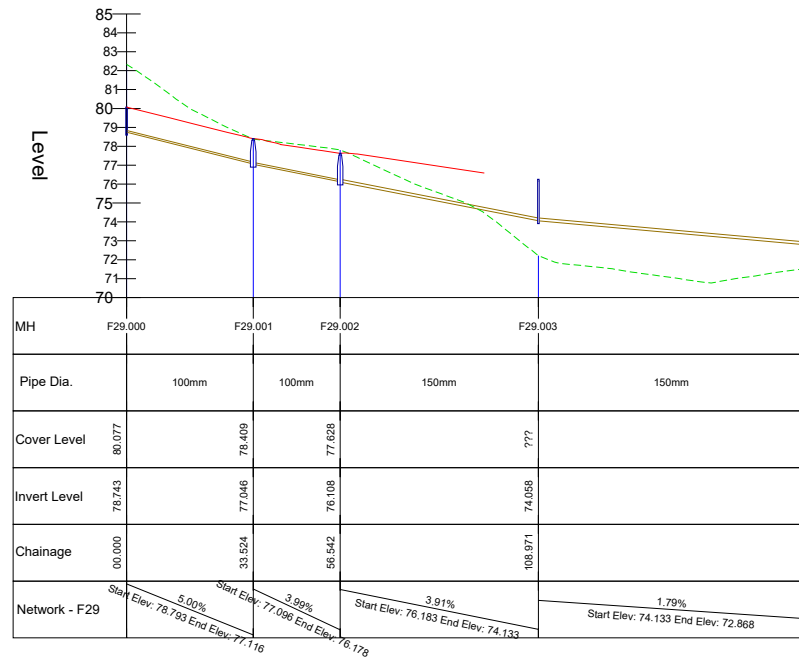


ALIGNMENT - F28 - LONGSECTION



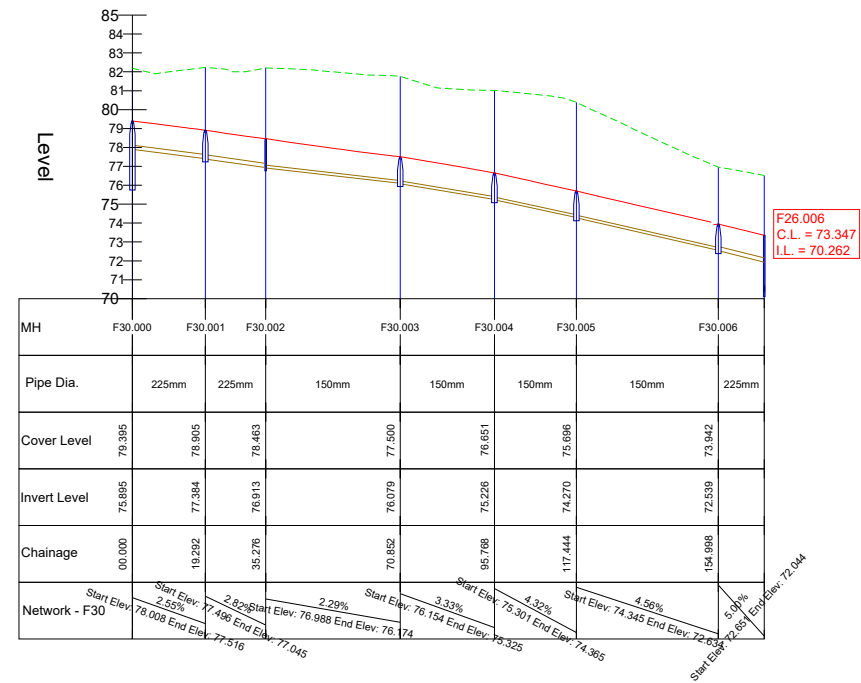
F27.001
C.L. = 128.206
I.L. = 126.167

ALIGNMENT - F29 - LONGSECTION



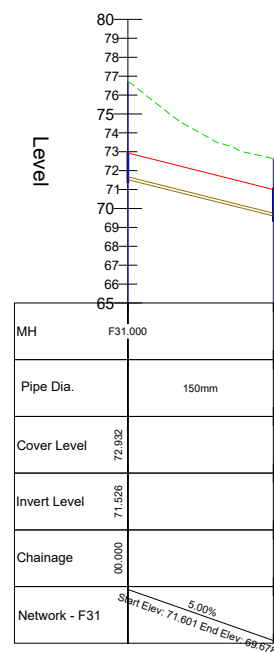
F26.003
C.L. = 73.865
I.L. = 72.654

ALIGNMENT - F30 - LONGSECTION



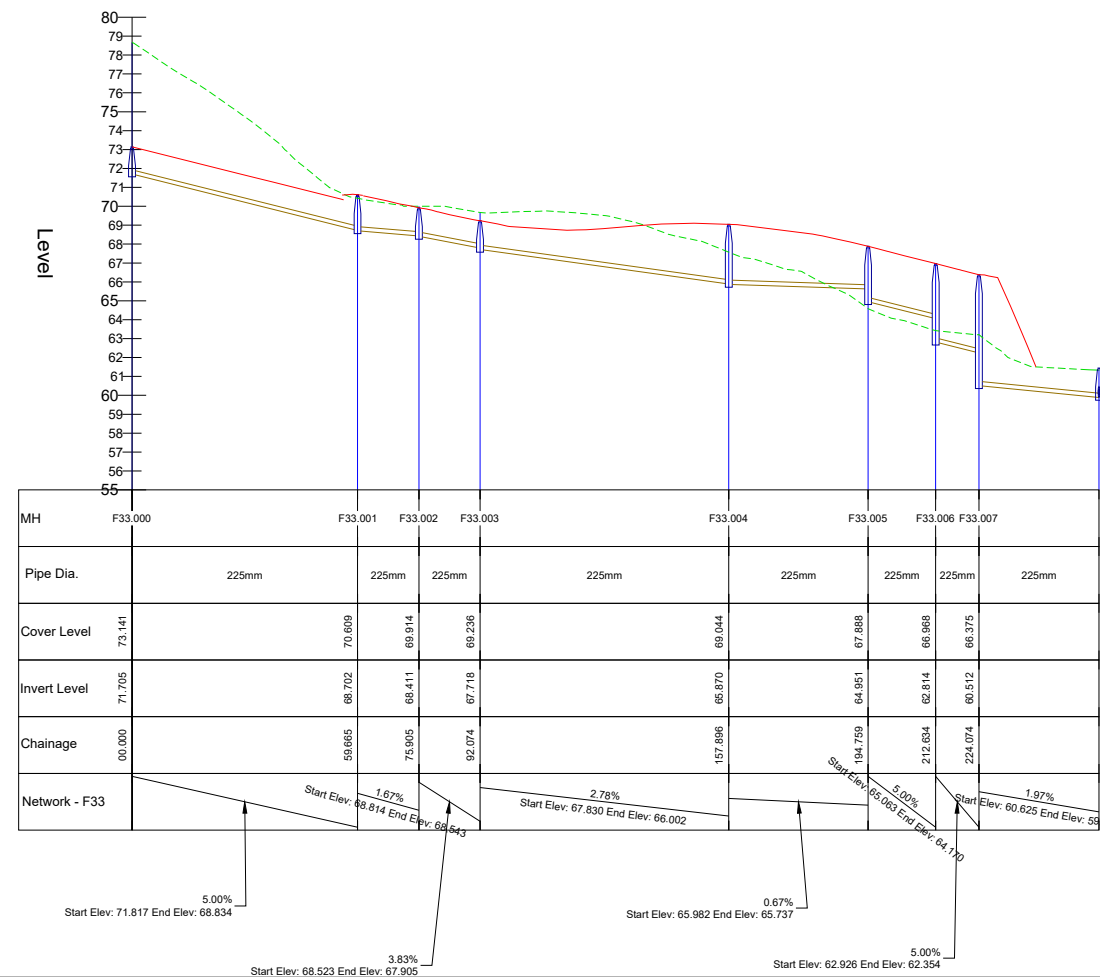
F26.006
C.L. = 73.347
I.L. = 70.262

ALIGNMENT - F31 - LONGSECTION



F26.008
C.L. = 71.071
I.L. = 69.475

ALIGNMENT - F33 - LONGSECTION



F15.010
C.L. = 61.441
I.L. = 59.887

NOTES:
All dimensions in metres.
Do not scale from drawing.
For any discrepancies found please consult with design office.
This drawing should be read in conjunction with all contract drawings, documents and specifications.
Gravity sewer pipe material to be concrete in accordance with Irish Water Wastewater Code of Practice, section 3.13.1

Existing ground ---
Proposed surface ---
Foul pipeline ---

| Rev | By | Date | Description |
|-----|----|------|-------------|
| | | | |
| | | | |
| | | | |

Drawing Status: PLANNING
NOT CERTIFIED FOR CONSTRUCTION

Project Title: Longview Estate Development

Drawing Title: Longsections - Foul

Client: Longview Estates Ltd.

M.H.L. & Associates Ltd.
Consulting Engineers
Carrig Mór House,
10 High Street,
Douglas Road,
Cork
Tel: 021-4840214
Fax: 021-4840215
E-Mail: info@mhl.ie

| | | |
|--|--------------------------------|--------------------|
| Designed: SM | Drawn: SM | Checked: KM |
| Scale: H: 1:1000, V: 1:200 @ A1 H: 1:2000, V: 1:400 @ A3 | Date: Nov 2019 | |
| Job No: 17066HD | Drawing No: LHD_FLS_P08 | Revision: |