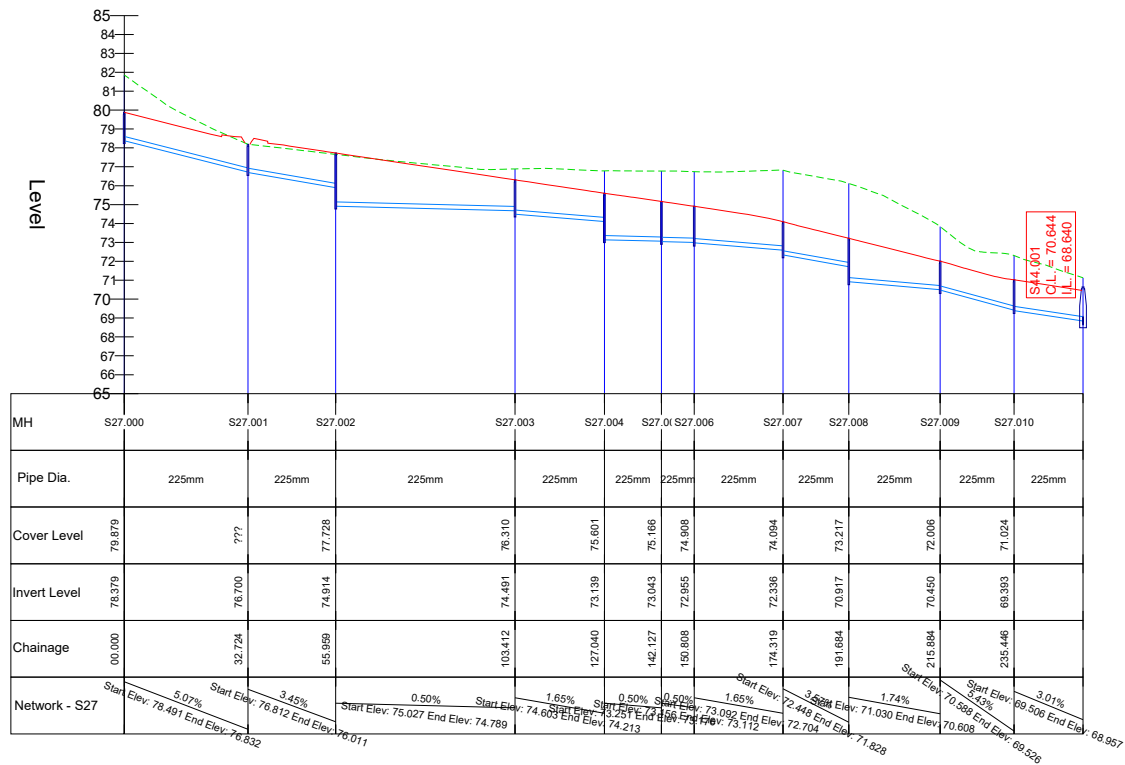
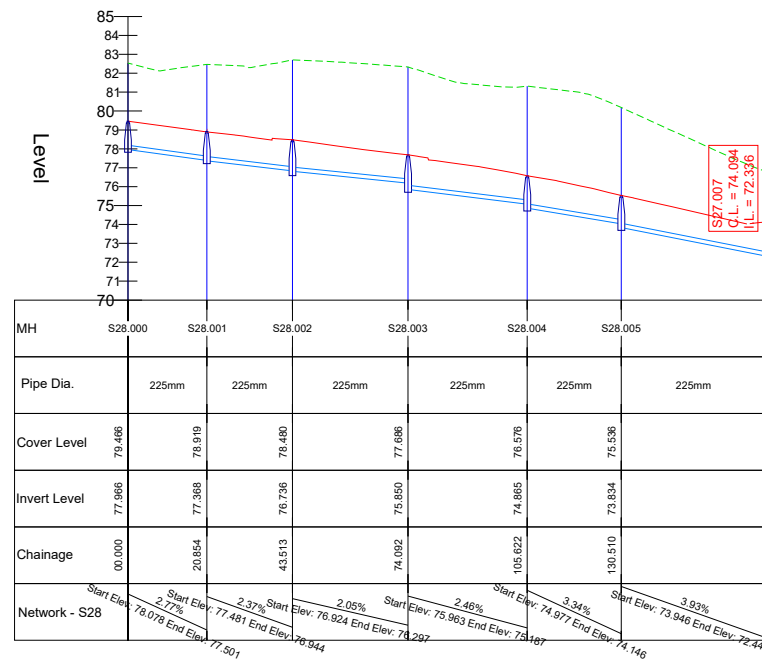


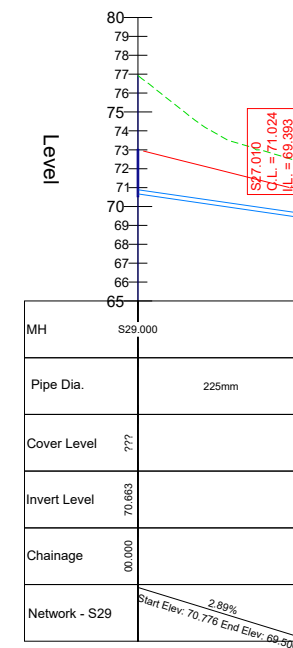
### ALIGNMENT - S27 - LONGSECTION



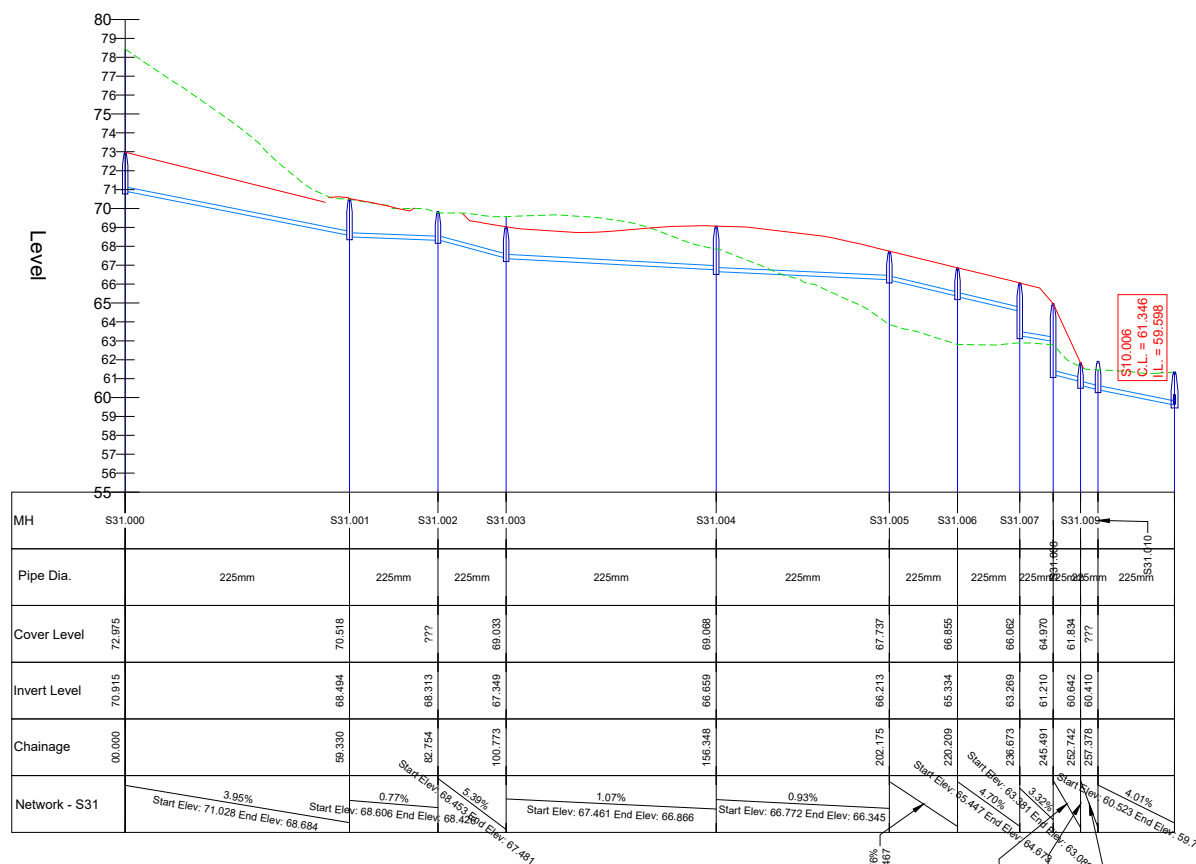
### ALIGNMENT - S28 - LONGSECTION



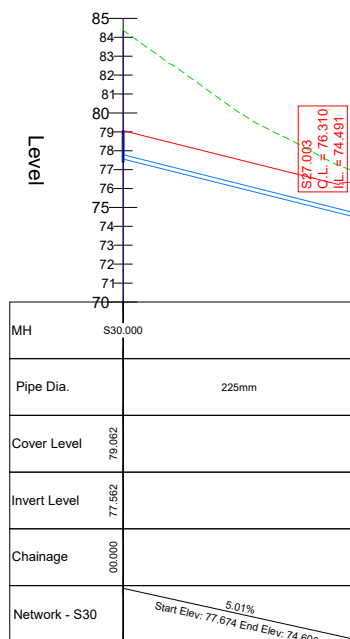
### ALIGNMENT - S29 - LONGSECTION



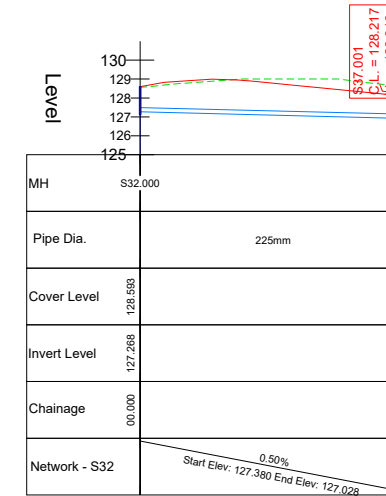
### ALIGNMENT - S31 - LONGSECTION



### ALIGNMENT - S30 - LONGSECTION



### ALIGNMENT - S32 - LONGSECTION



#### NOTES:

All dimensions in metres.  
Do not scale from drawing.  
For any discrepancies found please consult with design office.  
This drawing should be read in conjunction with all contract drawings, documents and specifications.

Gravity sewer pipe material to be concrete in accordance with Irish Water Wastewater Code of Practice, section 3.13.1

Existing ground ---  
Proposed surface ---  
Storm pipeline ---

Rev	By	Date	Description

**Drawing Status:** PLANNING  
NOT CERTIFIED FOR CONSTRUCTION

**Project Title:** Longview Estate Development

**Drawing Title:** Longsections - Storm

**Client:** Longview Estates Ltd.



**M.H.L. & Associates Ltd.**  
**Consulting Engineers**

Carrig Mór House,  
10 High Street,  
Douglas Road,  
Cork

Tel: 021-4840214  
Fax: 021-4840215  
E-Mail: info@mhl.ie

**Designed:** SM **Drawn:** SM **Checked:** KM

**Scale:** H: 1:1000, V: 1:200 @ A1  
H: 1:2000, V: 1:400 @ A3 **Date:** Nov 2019

**Job No:** 17066HD **Drawing No:** LHD\_SLS\_P07 **Revision:**