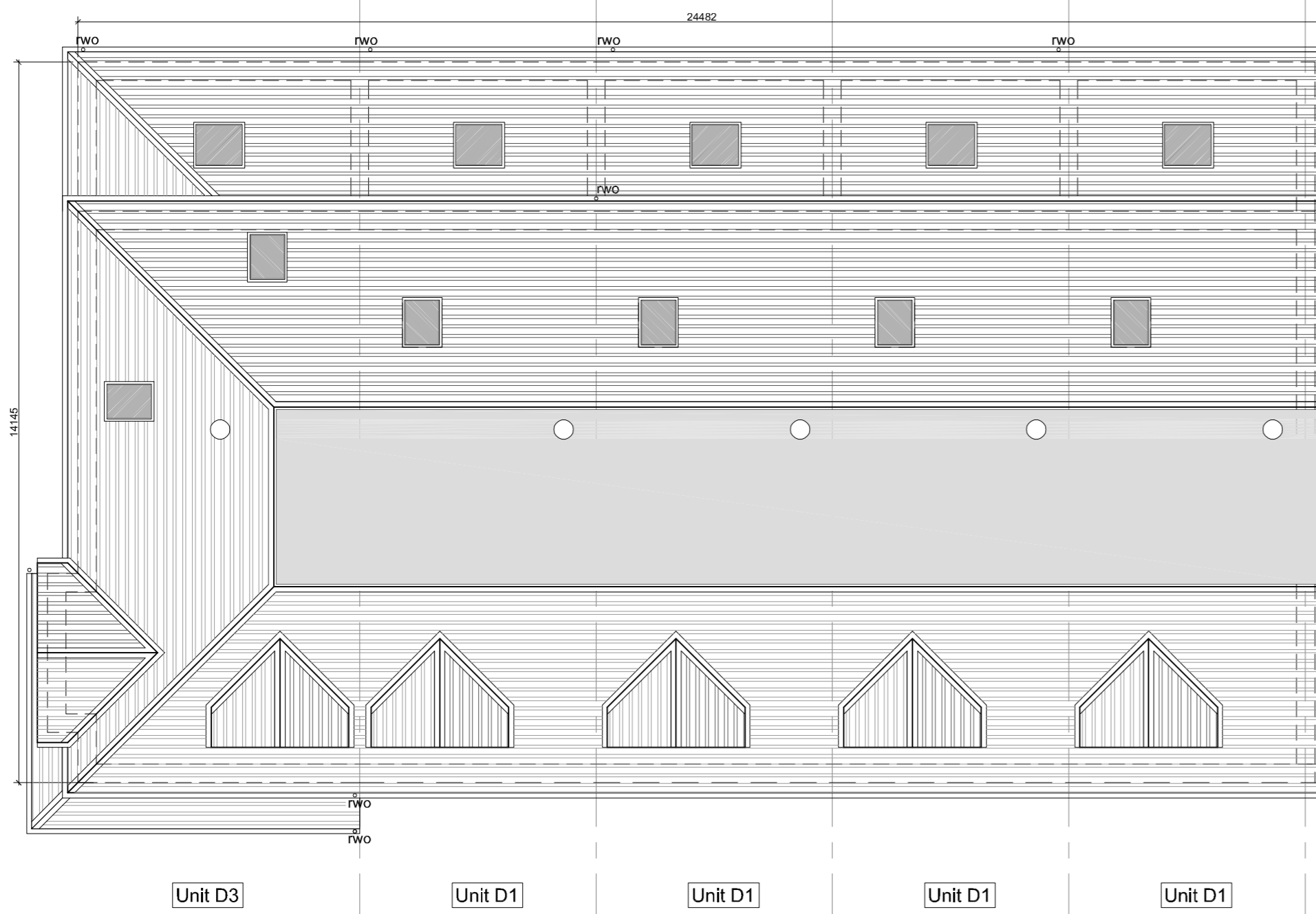
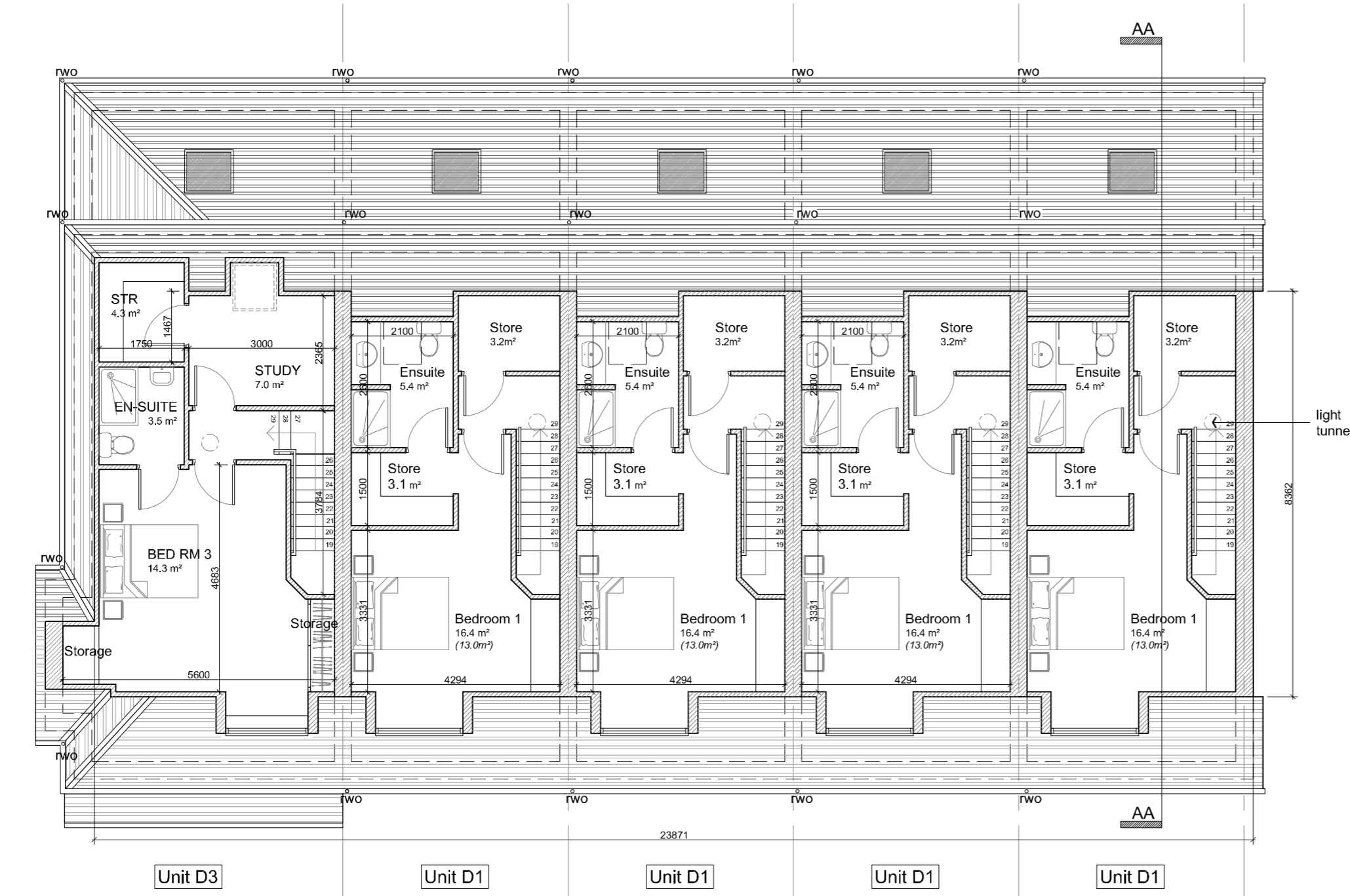


Note:  
North point varies  
refer to Site Plan



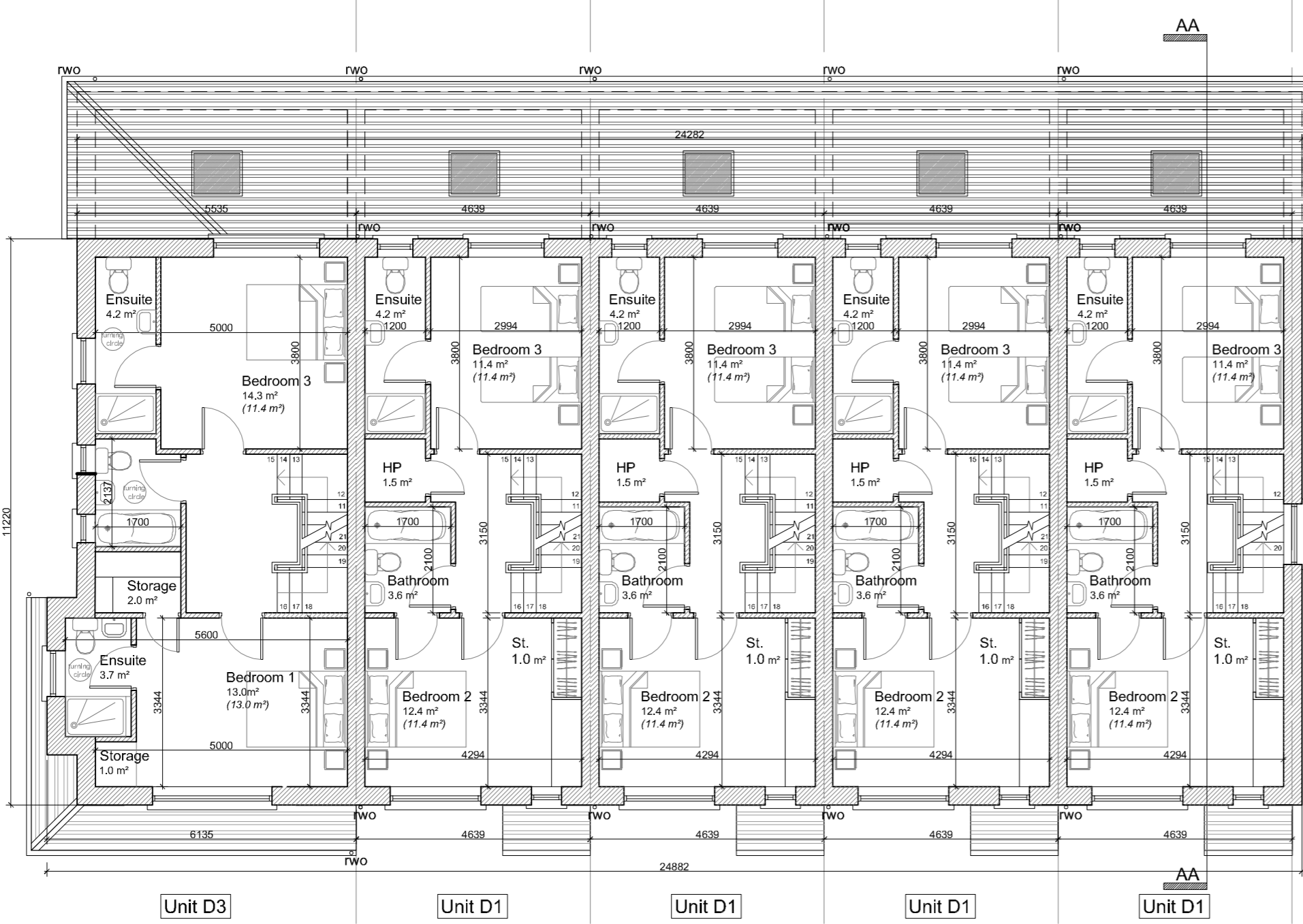
04 ROOF PLAN  
SCALE: 1:100



03 SECOND FLOOR PLAN  
SCALE: 1:100

House Type D3 & D4 3 Bed 6 Person Semi Detached		
Ground Floor Area	69.9 m <sup>2</sup>	752 ft <sup>2</sup>
First Floor Area	53.9m <sup>2</sup>	580 ft <sup>2</sup>
Second Floor Area	43.1 m <sup>2</sup>	349 ft <sup>2</sup>
Overall Floor Area	166.9 m <sup>2</sup>	1,786 ft <sup>2</sup>

House Type D1 & D2 3 Bed 6 Person Terraced Unit		
Ground Floor Area	57.6 m <sup>2</sup>	620 ft <sup>2</sup>
First Floor Area	45.0m <sup>2</sup>	484 ft <sup>2</sup>
Second Floor Area	35.2 m <sup>2</sup>	378 ft <sup>2</sup>
Overall Floor Area	137.8 m <sup>2</sup>	1,483 ft <sup>2</sup>



02 FIRST FLOOR PLAN  
SCALE: 1:100



01 GROUND FLOOR PLAN  
SCALE: 1:100

Rev	Date	Initial	Notes	Chk
A	05/20	AC	Issued for Planning.	

### SHD Issue

Client  
Romeville Developments Ltd.

Project  
Proposed Residential Development  
Stoney Hill Road, Rathcoole,  
Co. Dublin

Drawing Title  
House Type D1 & D3  
Block C  
Plans

Drawn	Checked	Paper Size	Scale	Date
AC	PU	A1	1:100	May 2020
Project No. 17-098		Drawing No. 304		Revision A