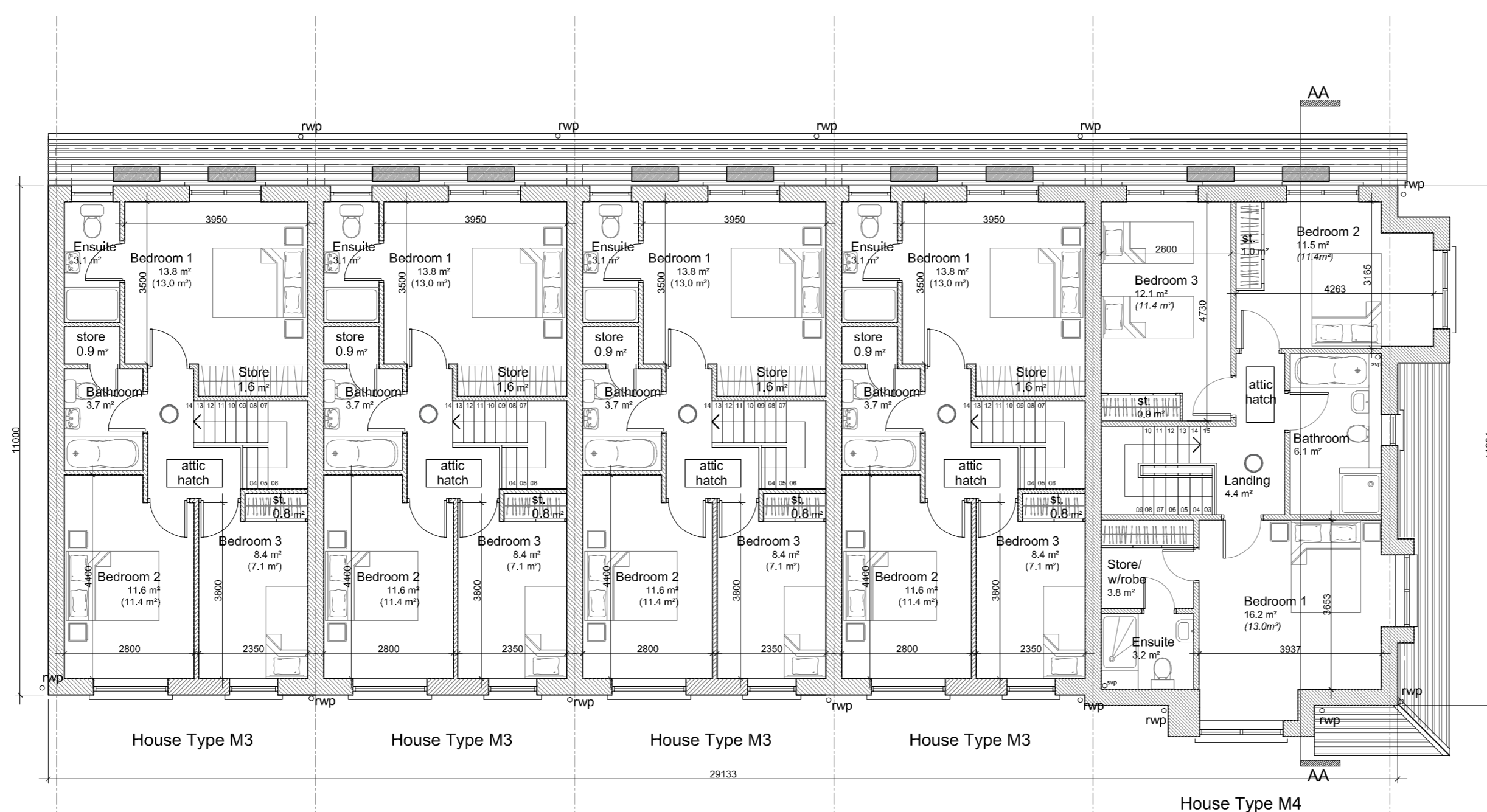
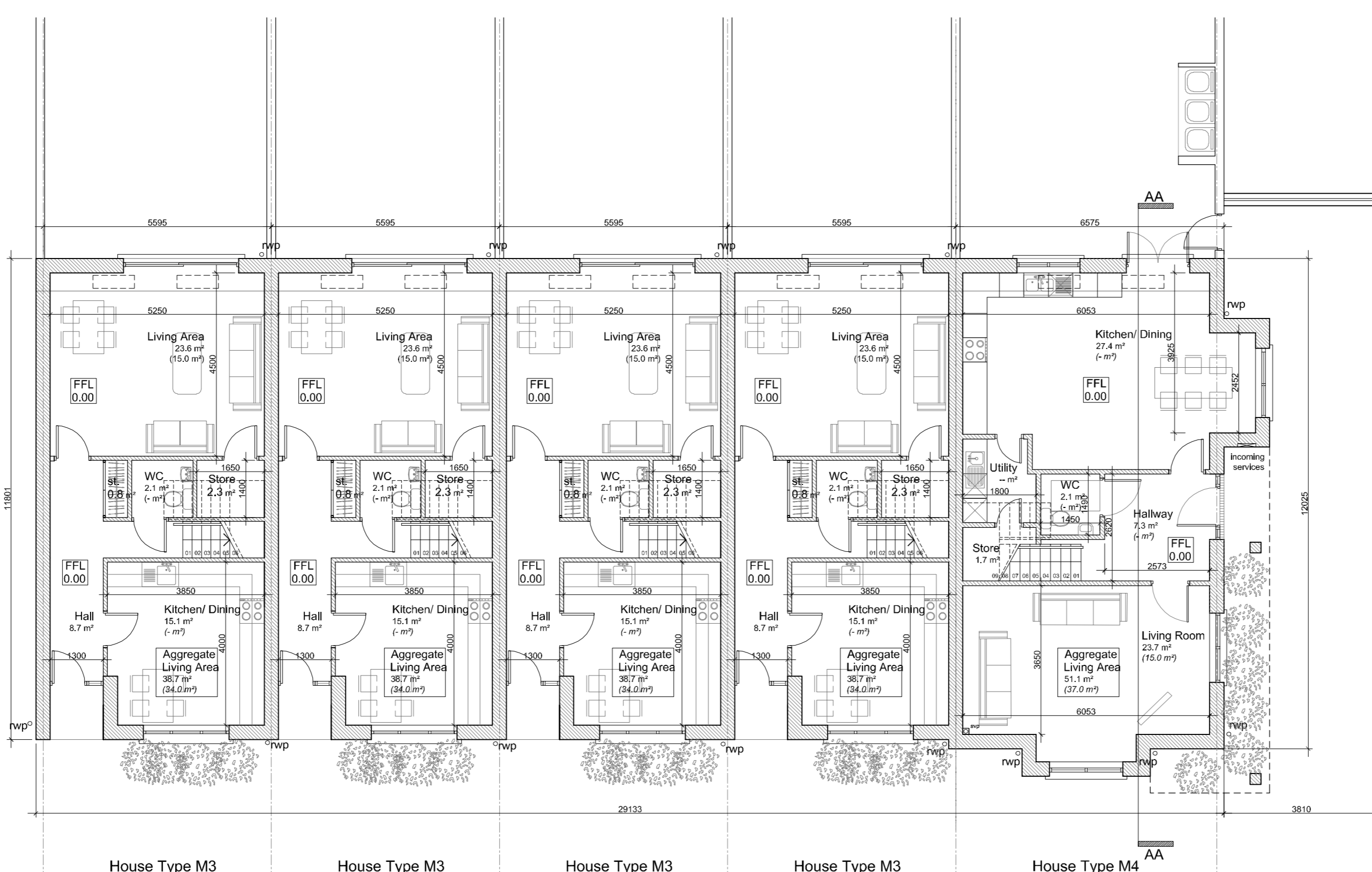


03 ROOF PLAN  
SCALE: 1:100



02 FIRST FLOOR PLAN  
SCALE: 1:100



01 GROUND FLOOR PLAN  
SCALE: 1:100

House Type M3 3 Bed 5 Person Semi Detached			
Ground Floor Area	56.5 m <sup>2</sup>	608 ft <sup>2</sup>	
First Floor Area	54.0 m <sup>2</sup>	581 ft <sup>2</sup>	
Overall Floor Area	110.5 m <sup>2</sup>	1,189 ft <sup>2</sup>	

House Type M4 3 Bed 5 Person Semi Detached			
Ground Floor Area	72.9 m <sup>2</sup>	784 ft <sup>2</sup>	
First Floor Area	67.8 m <sup>2</sup>	729 ft <sup>2</sup>	
Overall Floor Area	140.7 m <sup>2</sup>	1,514 ft <sup>2</sup>	

Rev	Date	Initial	Notes	Chk
A	05/20	AC	SHD Issue	

## SHD Issue

Client: Romeville Developments Ltd.

Project: Proposed Residential Development  
Stoney Hill Road, Rathcoole,  
Co. Dublin

Drawing Title: Terrace Type M3 & M4

Plans

Drawn	Checked	Paper Size	Scale	Date
SMcG	PU	A1	1:100	May 2020

Project No.	Drawing No.	Revision
17-098	361	A