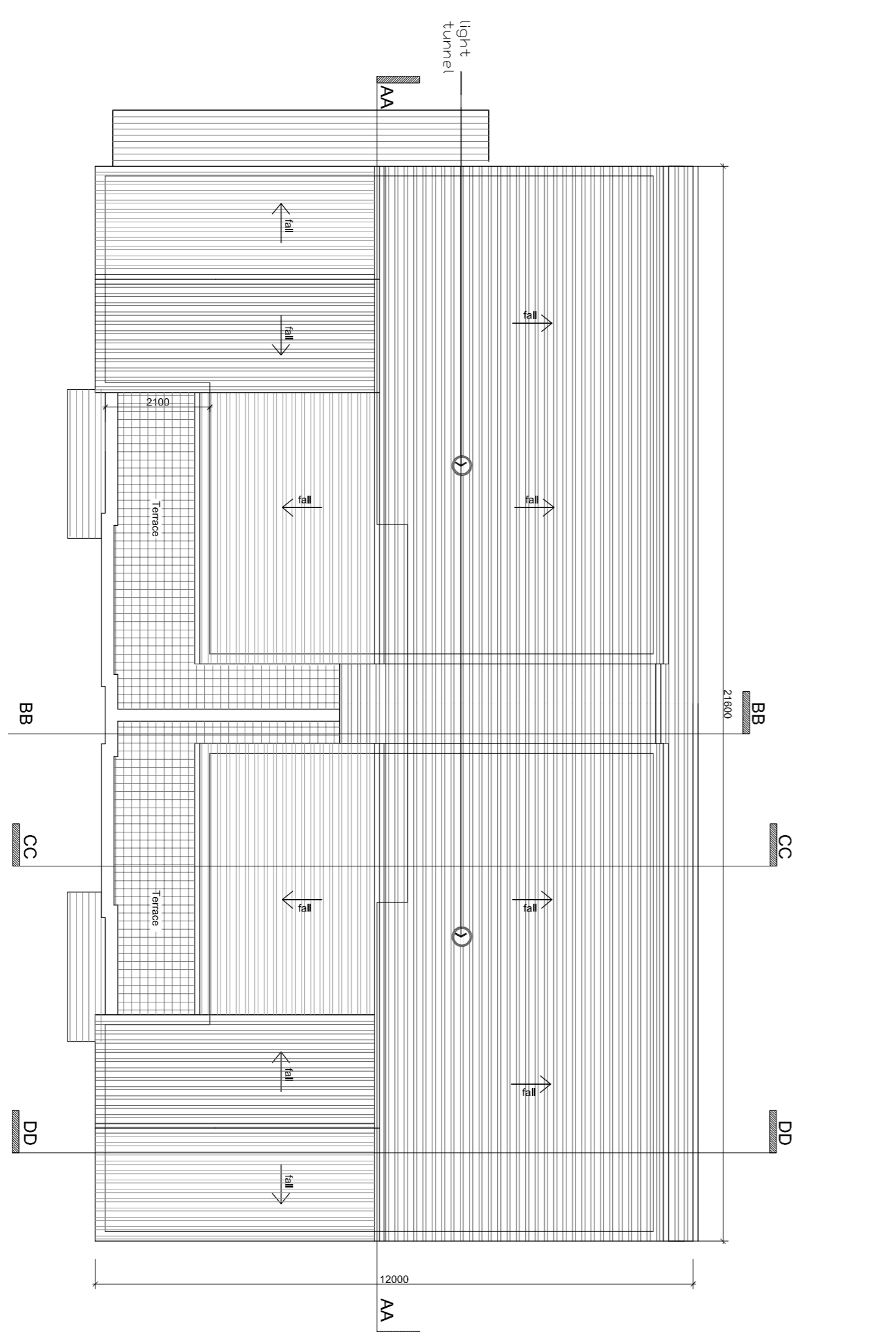
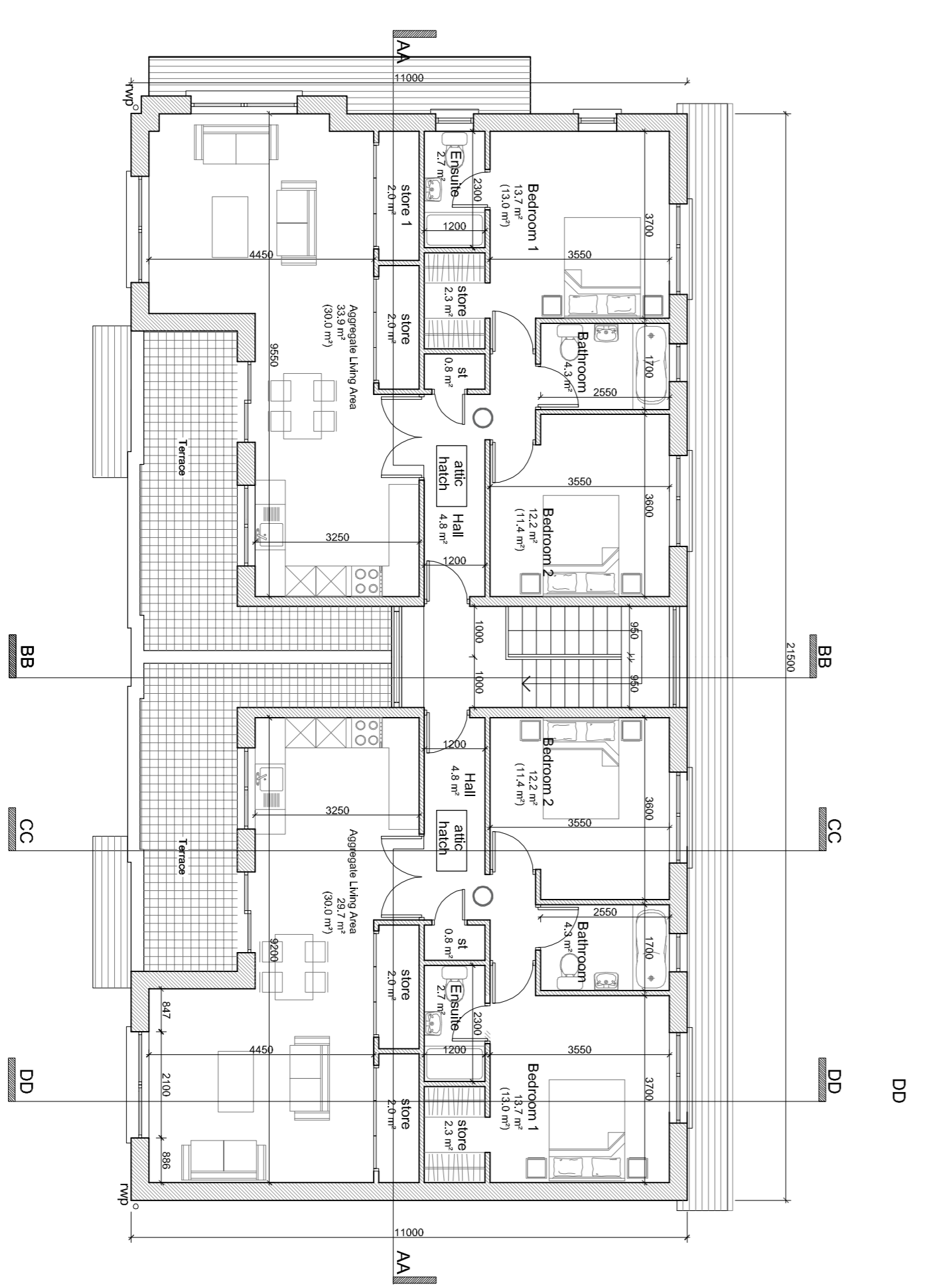
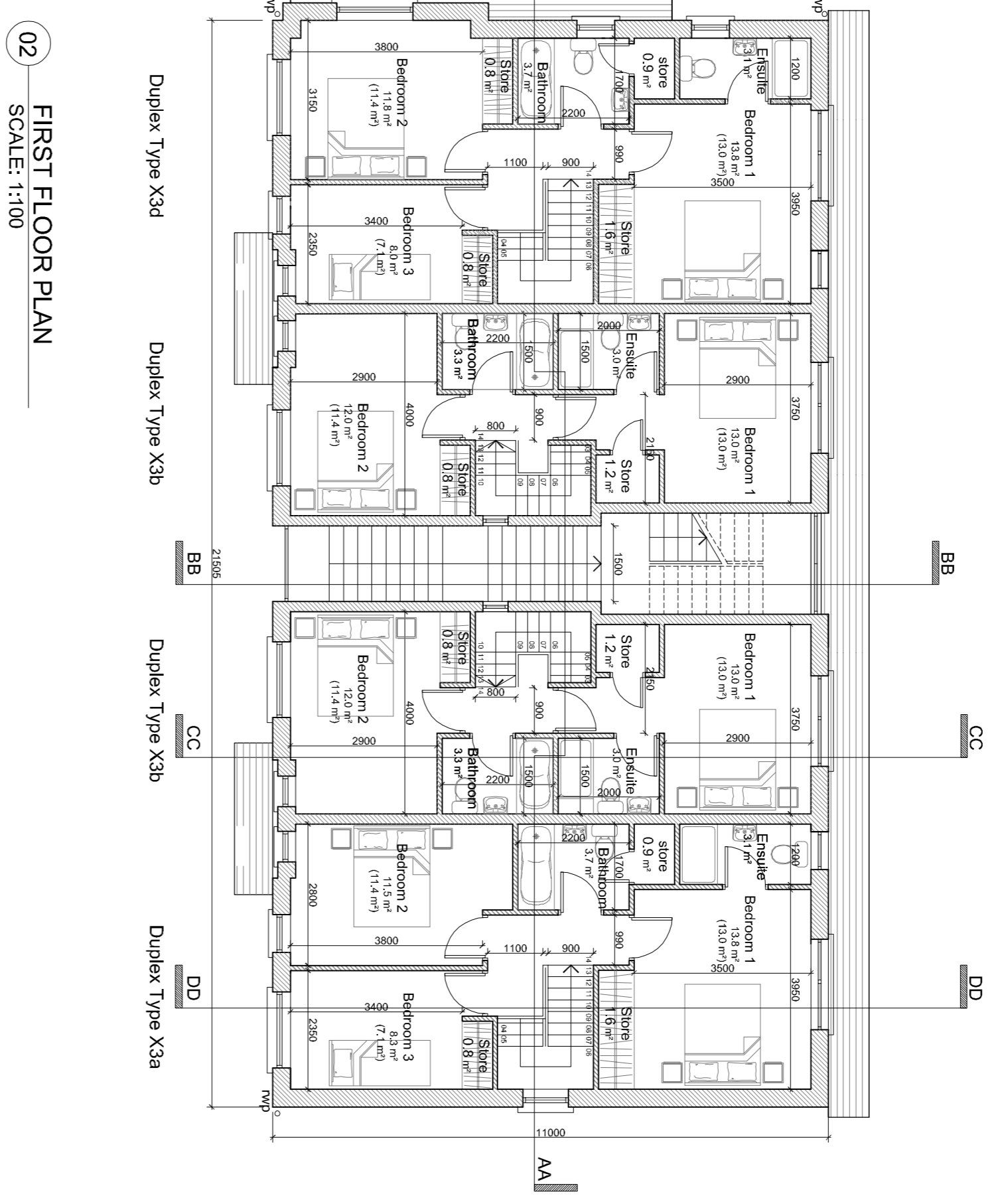
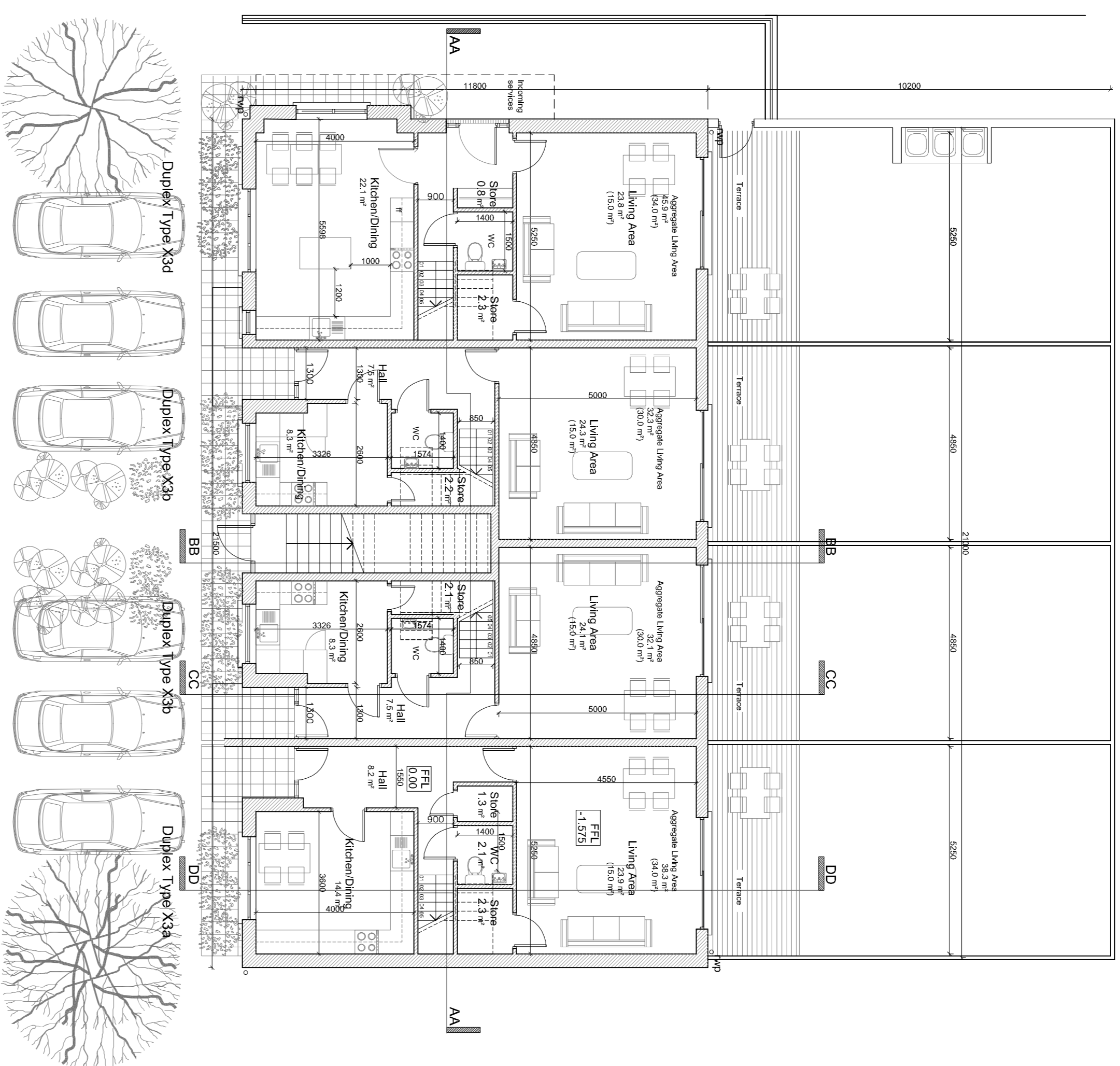


The copyright of this drawing is vested with Costaphine & Wright Ltd and must not be copied or reproduced without the consent of the company.  
 Figures and dimensions only to be taken from this drawing. DO NOT SCALE.  
 All contractors must visit the site and be responsible for checking all setting out dimensions and notifying the architect of any discrepancies prior to any manufacture or construction work.  
 NOTES:



<b>House Type X3a</b> 3 Bed 3 Person Semi Detached	Ground Floor Area 56.7 m <sup>2</sup> 610 ft <sup>2</sup>
	First Floor Area 53.9 m <sup>2</sup> 580 ft <sup>2</sup>
	Overall Floor Area 110.6 m <sup>2</sup> 1,190 ft <sup>2</sup>
<b>House Type X3b</b> 2 Bed 4 Person Terraced	Ground Floor Area 46.9 m <sup>2</sup> 504 ft <sup>2</sup>
	First Floor Area 38.9 m <sup>2</sup> 420 ft <sup>2</sup>
	Overall Floor Area 85.8 m <sup>2</sup> 924 ft <sup>2</sup>
<b>House Type X3d</b> 3 Bed 5 Person Semi Detached	Ground Floor Area 58.7 m <sup>2</sup> 632 ft <sup>2</sup>
	First Floor Area 55.1 m <sup>2</sup> 593 ft <sup>2</sup>
	Overall Floor Area 113.8 m <sup>2</sup> 1,225 ft <sup>2</sup>
<b>Duplex Type X3c (Top Floor Apartment)</b> 3 Bed 4 Person	Ground Floor Area 84.1 m <sup>2</sup> 905 ft <sup>2</sup>
	Overall Floor Area 84.1 m <sup>2</sup> 905 ft <sup>2</sup>

Rev	Date	Initials	Notes	CHK
A	09/20	AC	SHD Issue	CHK

**SHD ISSUE**

Client: **Romeville Developments Ltd.**  
 Project: **Proposed Residential Development**  
**Stoney Hill Road, Rathcoole,**  
**Co. Dublin**  
 Drawing Title: **Duplex Type X3**

Drawn	Checked	Project Size	Scale	Date
AC	PU	A1	1:100	May 2020
Project No.	Drawing No.	Revision		
17-098	404	A		