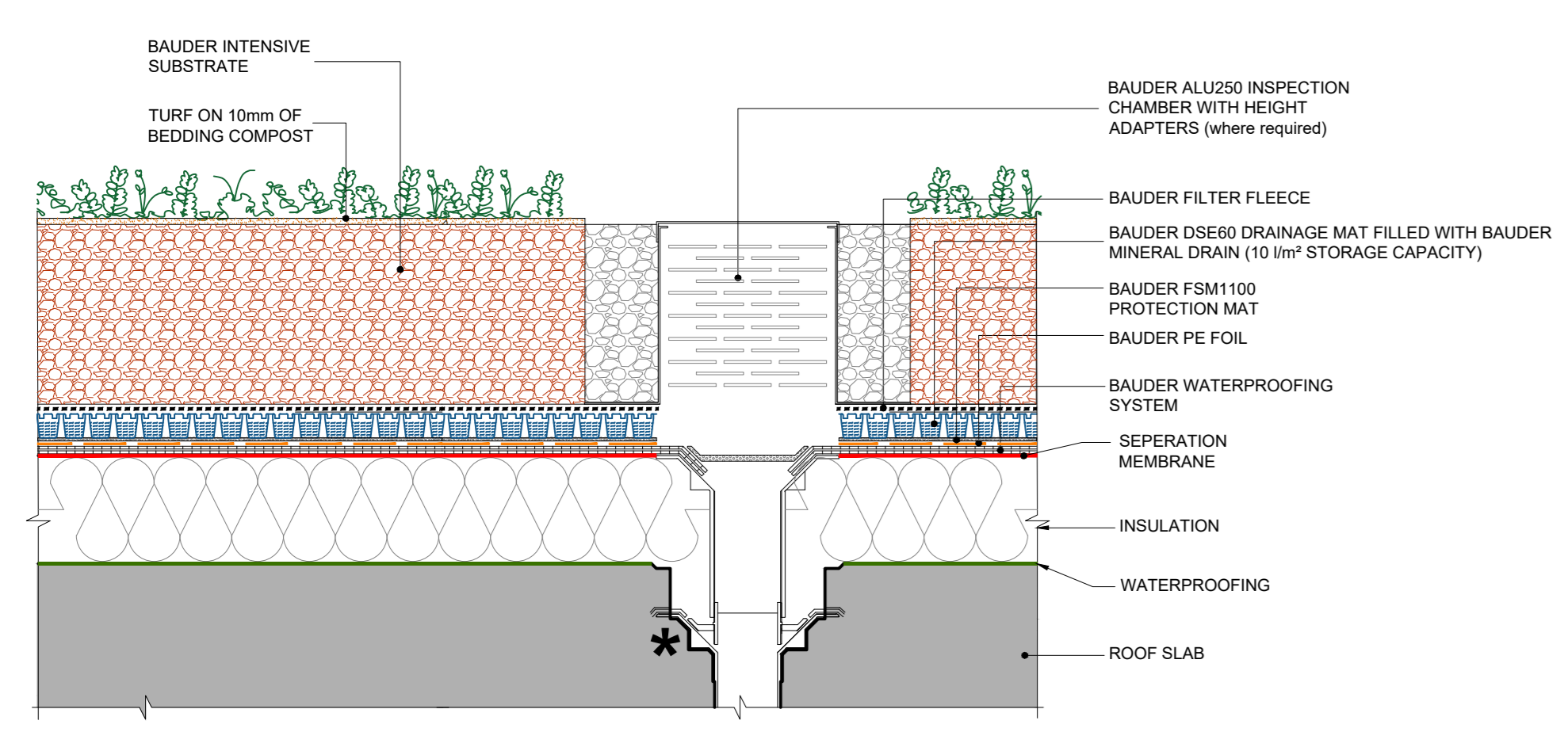
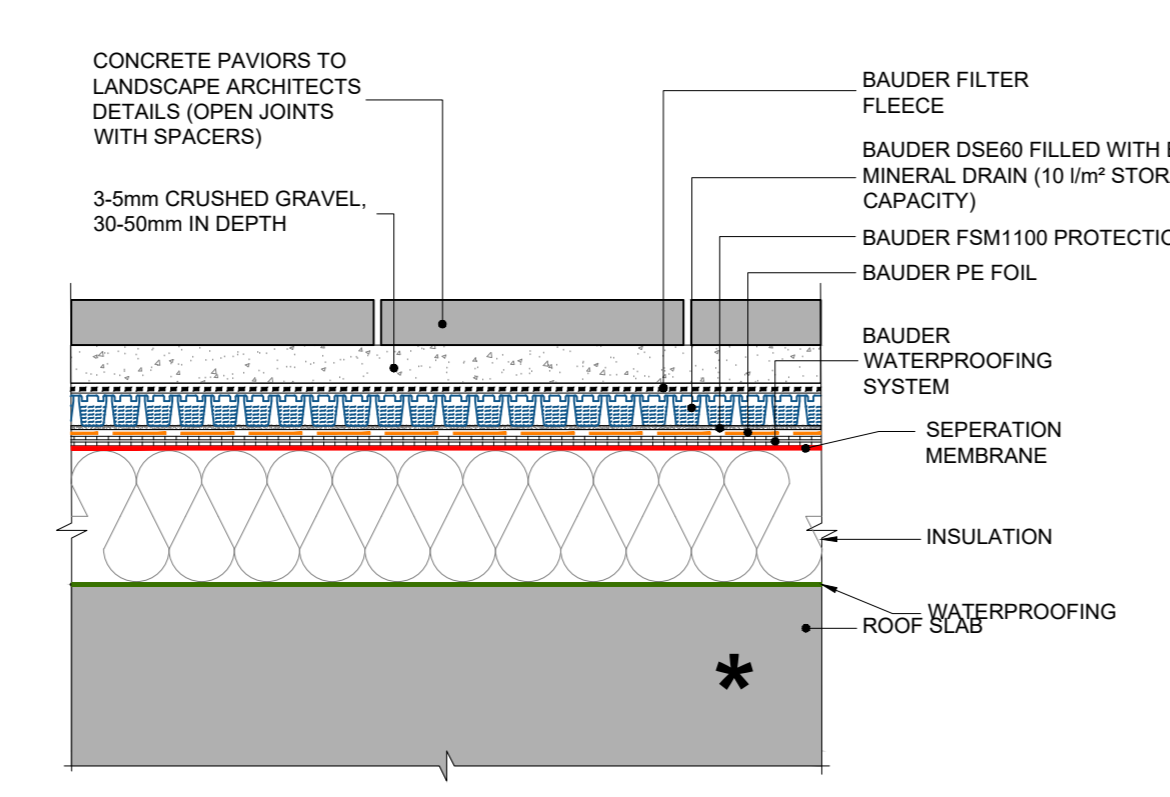


- THIS DRAWING IS TO BE READ IN CONJUNCTION WITH ALL ENGINEERS & ARCHITECTS DRAWINGS. DIMENSIONS ONLY (NOT SCALING) TO BE USED. WHERE A CONFLICT OF INFORMATION EXISTS OR IF IN ANY DOUBT - ASK.
- CONSULTANTS TO BE INFORMED IMMEDIATELY OF ANY DISCREPANCIES BEFORE WORK PROCEEDS.



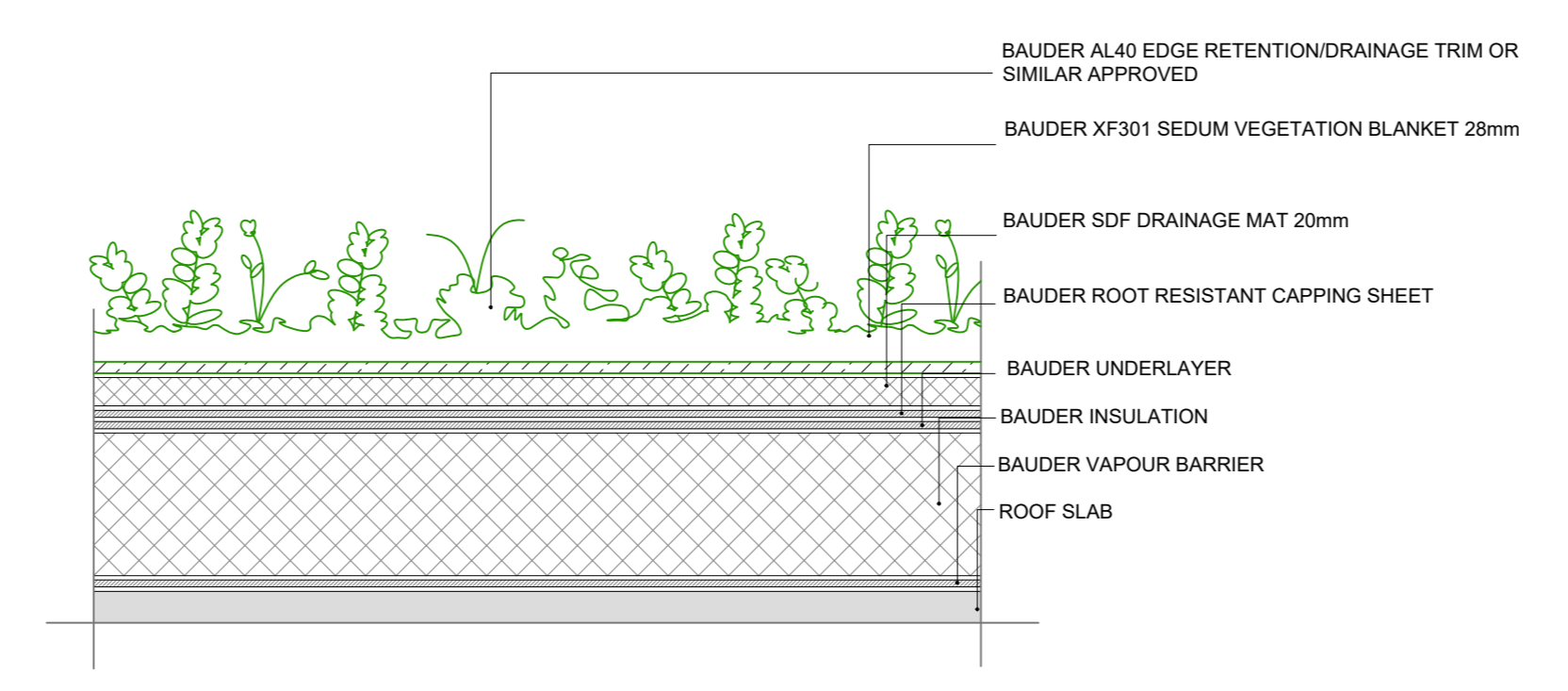
ROOF INTENSIVE SOFT LANDSCAPING SUDS DETAIL

* NOTE: BAUDER DETAILS SHOWN BUT APPROVED EQUAL SYSTEM WILL BE ACCEPTABLE



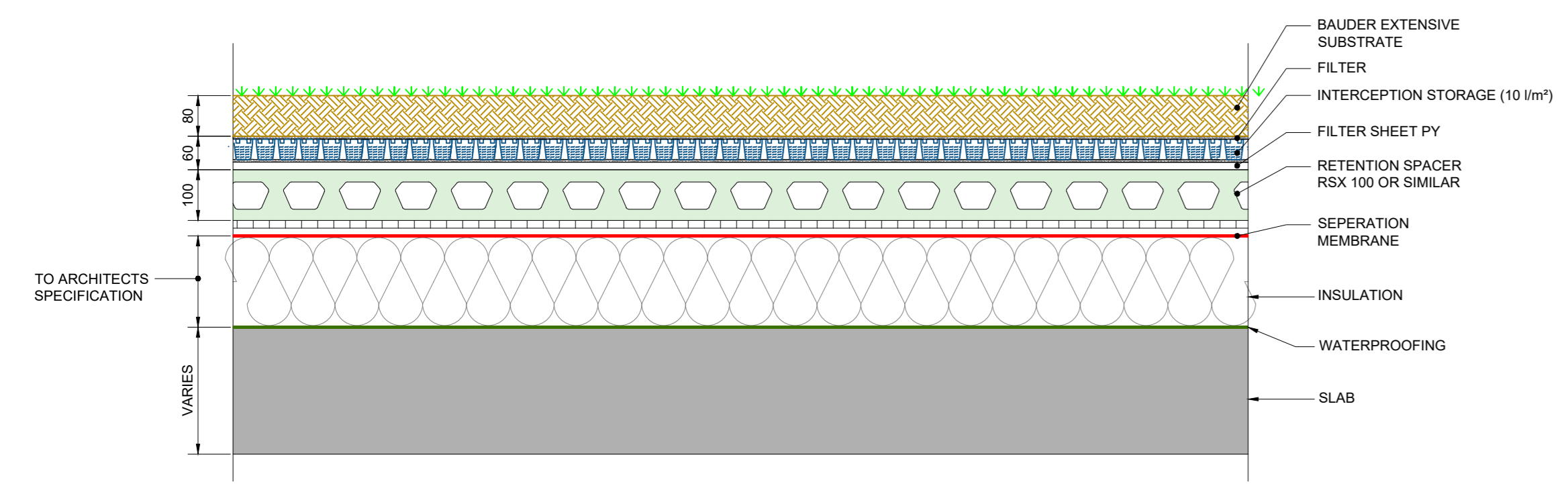
ROOF HARD LANDSCAPING SUDS DETAIL

* FOR AREAS TRAFFICKED FILTER FLEECE TO BE OMITTED & 200mm R.C. SLAB TO BE CAST OVER DSE60 DRAINAGE MAT & SURFACE FINISH TO LANDSCAPE ARCHITECTS REQUIREMENTS PLACED OVER CONCRETE.

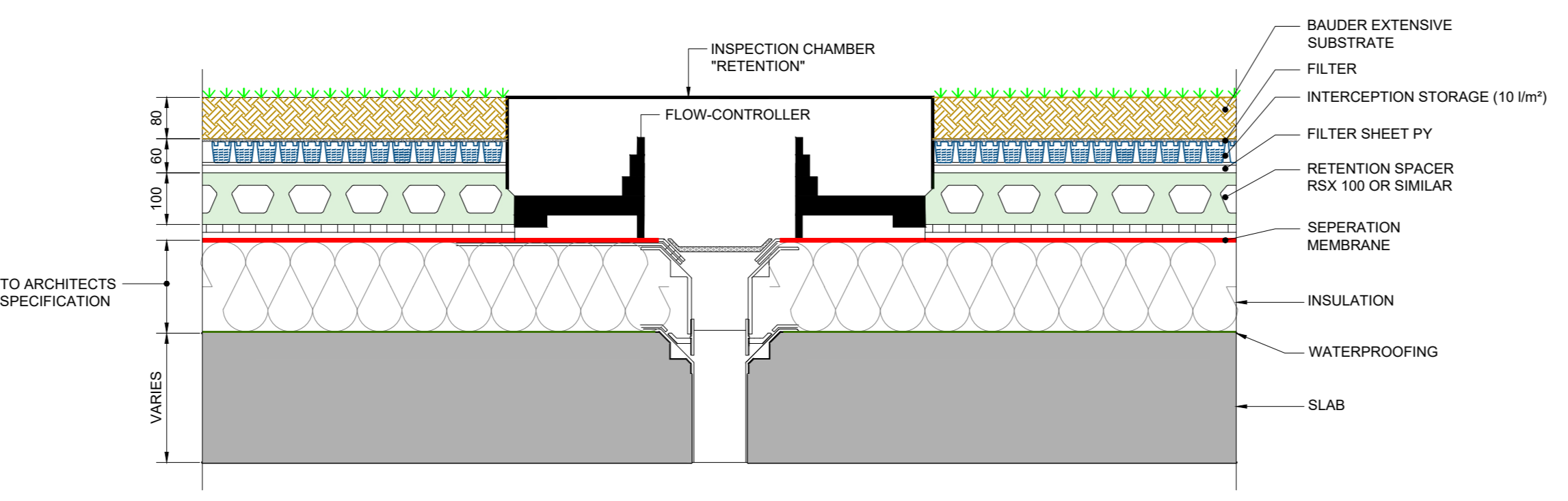


EXTENSIVE GREEN ROOF SUDS DETAIL

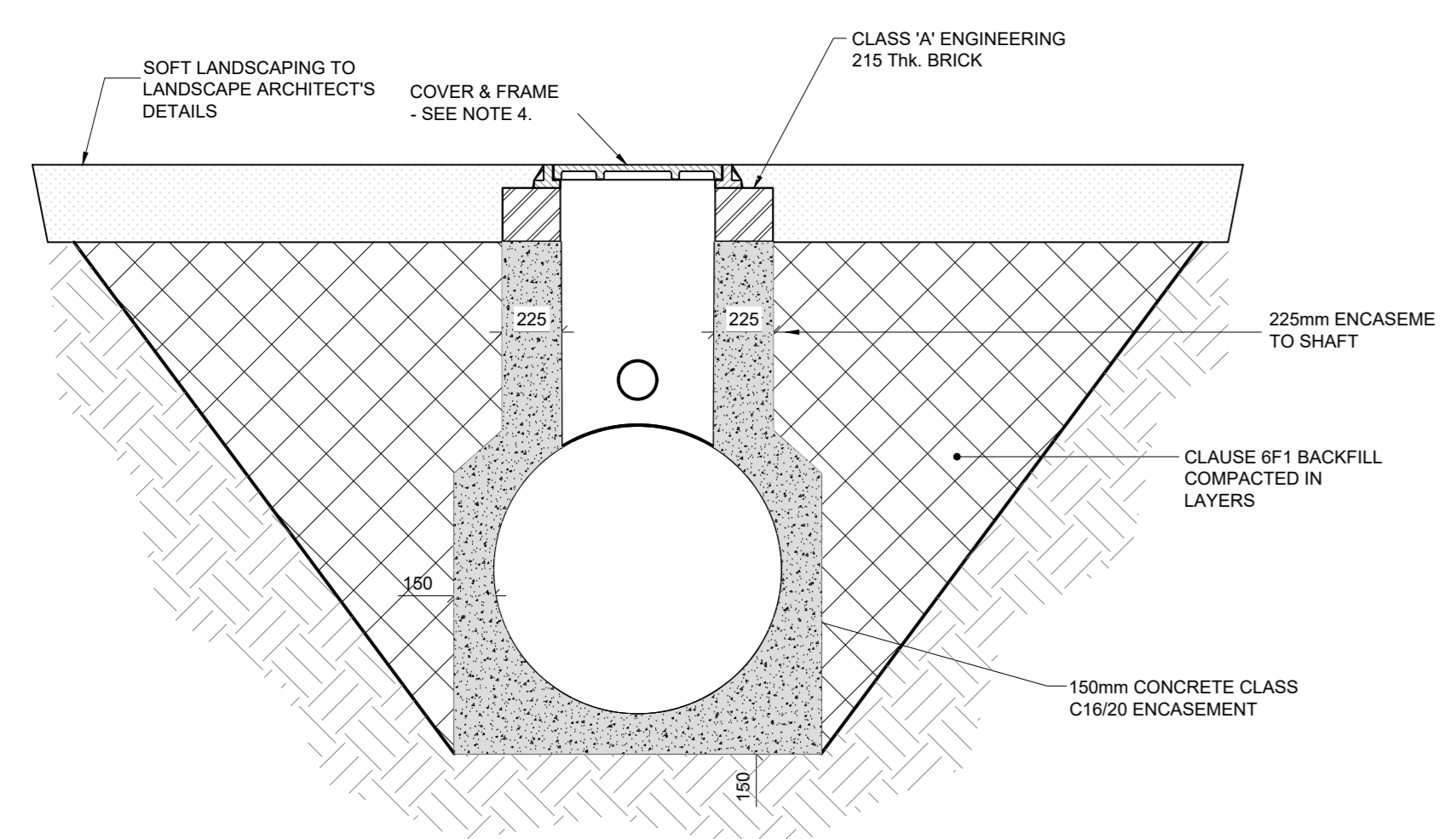
GREEN ROOF DETAILS



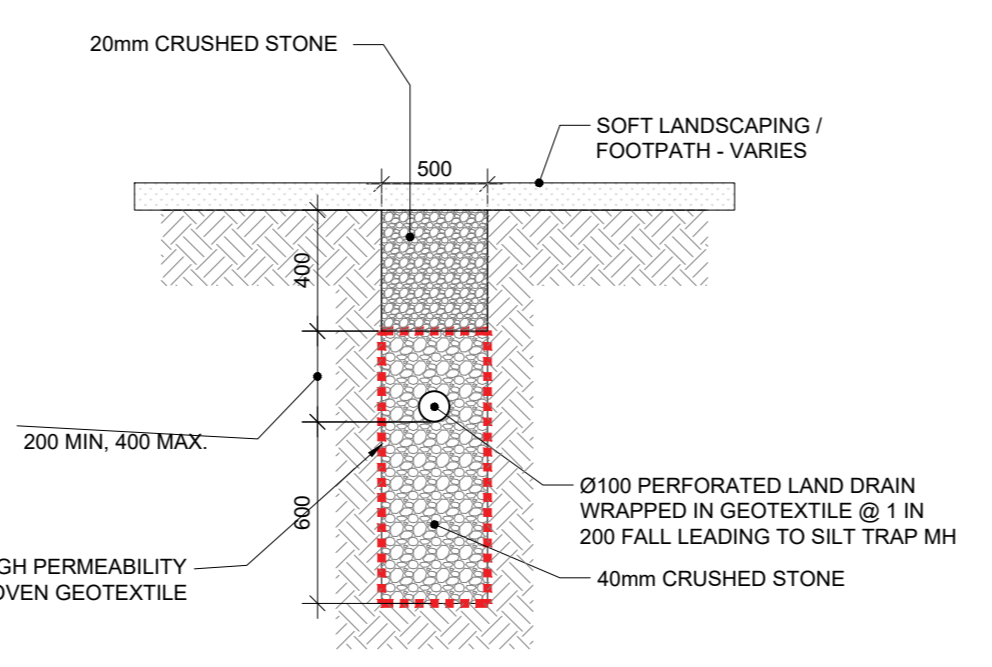
BLUE ROOF DETAIL



BLUE ROOF - RETENTION FLOW CONTROL SET

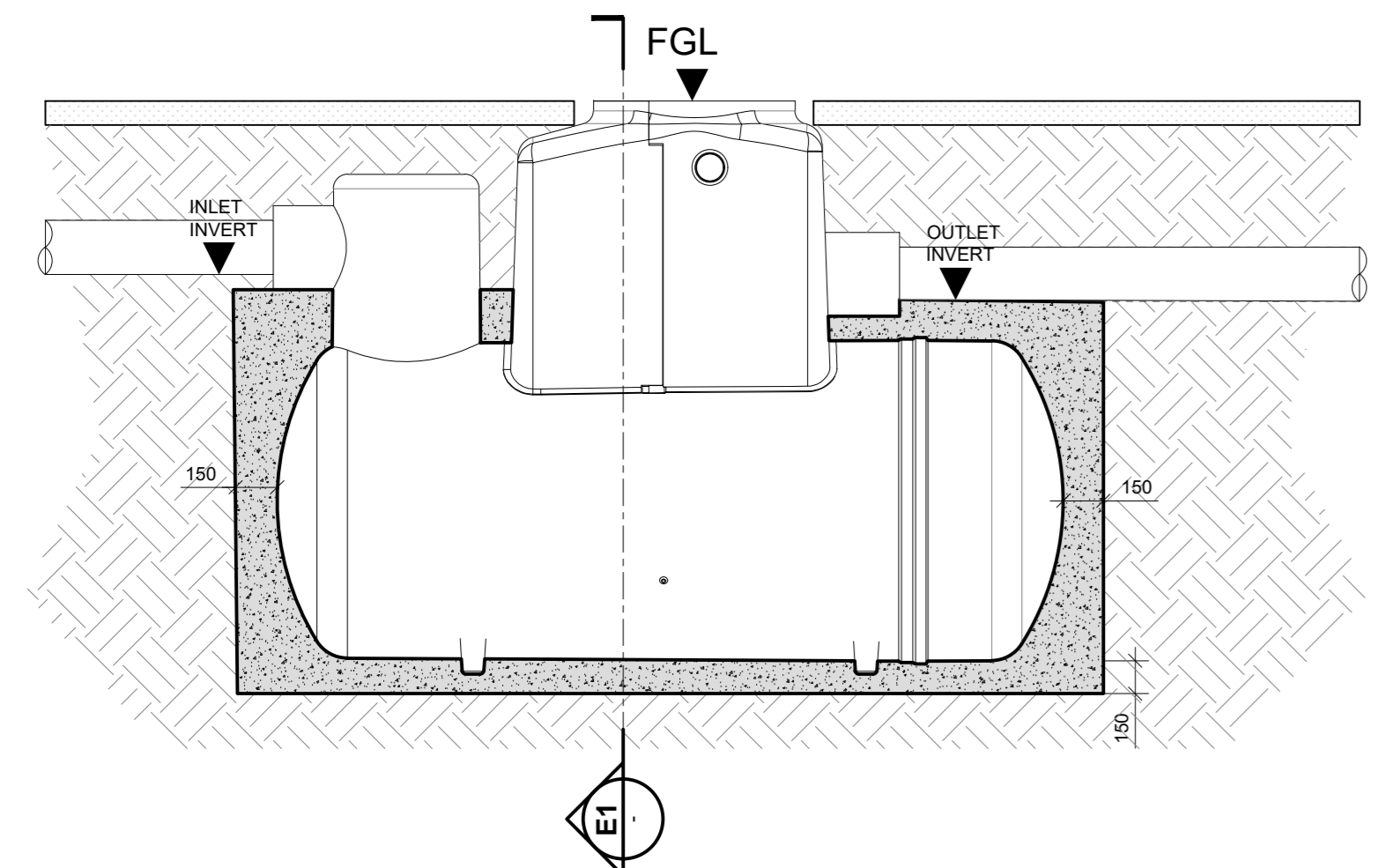


TYPICAL SECTION THROUGH PETROL INTERCEPTOR SHOWING CONCRETE SURROUND DETAIL



INFILTRATION TRENCH DETAILS

- NOTES:
- PROPRIETARY BYPASS PETROL INTERCEPTOR INSTALLED IN ACCORDANCE WITH MANUFACTURERS RECOMMENDATIONS.
 - INTERCEPTOR TO BE FULLY ENCASED IN MINIMUM 150mm CONCRETE.
 - INTERCEPTOR TO HAVE CAPACITY TO:
 - TREAT OUTFALL FROM IMPERMEABLE AREA OF 68,360m²
 - ACCEPT PEAK FLOW = 465 l/s (100 YR RETURN)
 - ACCEPT INLET AND OUTLET PIPES 750MM INTERNAL DIAMETER
 - INTERCEPTOR ACCESS COVER TO COMPLY WITH REQUIREMENTS OUTLINED IN DRAWING C-1200 DETAIL G FOR LIDS LOCATED IN SOFT LANDSCAPING.



BYPASS PETROL INTERCEPTOR DETAILS

ISSUE	DATE	DESCRIPTION	DRG	CHKD	APP
PL4	15.05.20	PLANNING ISSUE	AS	AS	AS
PL3	26.03.20	DRAFT PLANNING ISSUE	AS	AS	AS
PL2	13.01.20	ISSUED FOR PLANNING	AS	AS	AS
PL1	05.11.19	ISSUED FOR PLANNING	AS	AS	AS
P3	22.10.19	ISSUED FOR COMMENT	AS	AS	AS
P2	21.10.19	ISSUED FOR COMMENT	AS	AS	AS
P1	20.09.19	ISSUED FOR COMMENT	AS	AS	AS

PLANNING

BM Dublin Office: Sandwell House, 33-34 Lower Sandwell Street, Dublin 2, Ireland. Tel: 001 872 2000 Fax: 001 872 2164

BARRETT | MANDRY London Office: 12 Mill Street, London SE1 2AY, United Kingdom. Tel: (0044) 084 5413 2722

Consulting Engineers, Civil, Structural, Project Management & -mail: info@bm.co.uk Web: www.bm.co.uk

The Institution of Structural Engineers **ACEI**

CLIENT: **DBTR-SCR1 Fund, a Sub-Fund of the CWTC Multi Family ICAV**

PROJECT TITLE: **BAILEY GIBSON SOUTH CIRCULAR ROAD** **BM PROJECT No: 19.117**

MODEL REFERENCE: **BG-BMD-00-00-DR-C-1250** **MODEL REV: 80** **SUSTAINABILITY**

DRAWING TITLE: **TYPICAL SuDS DETAILS - SHEET 1**

DRAWING No: **BG-BMD-00-00-DR-C1250** **DATE: PL4**