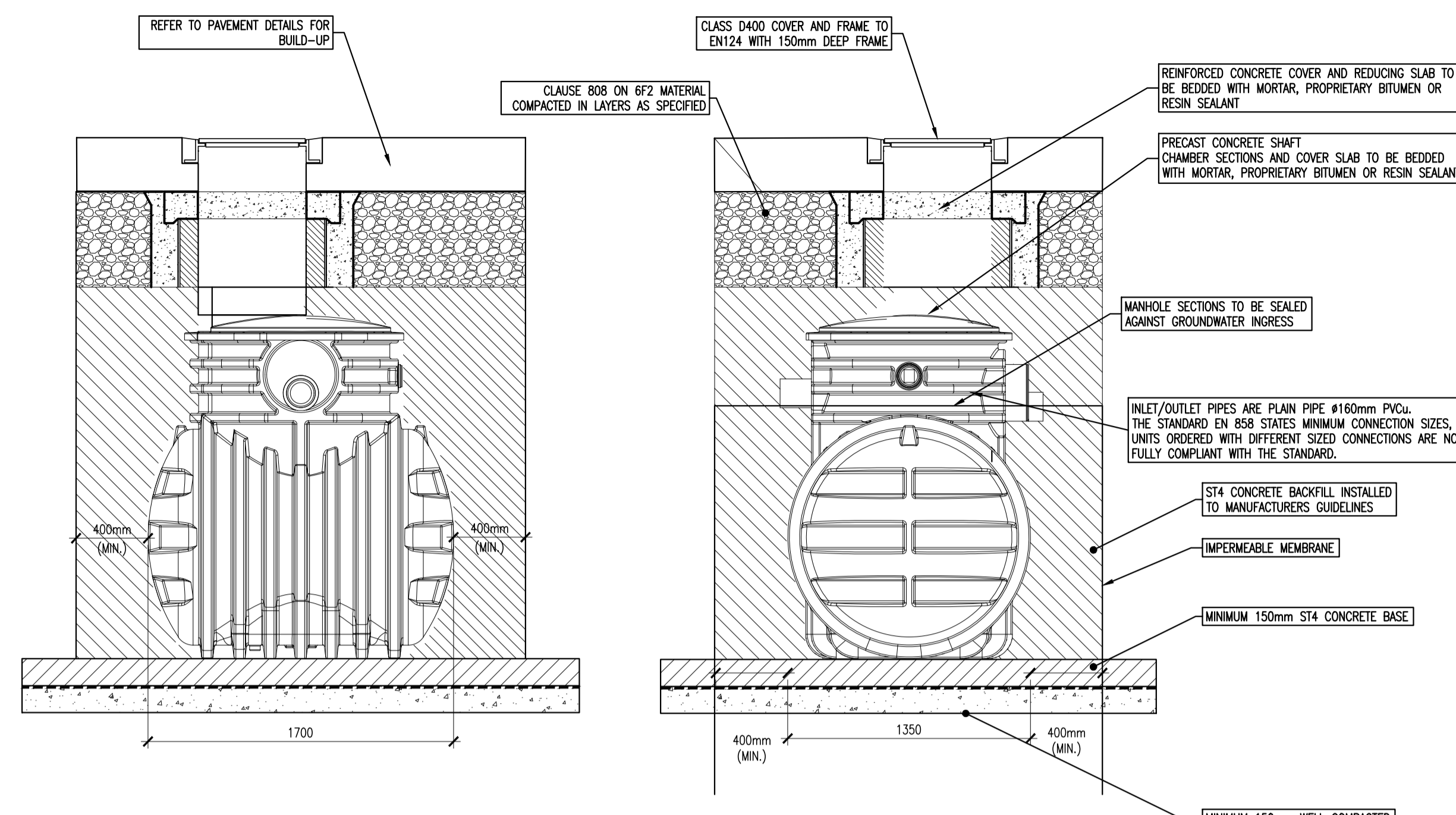


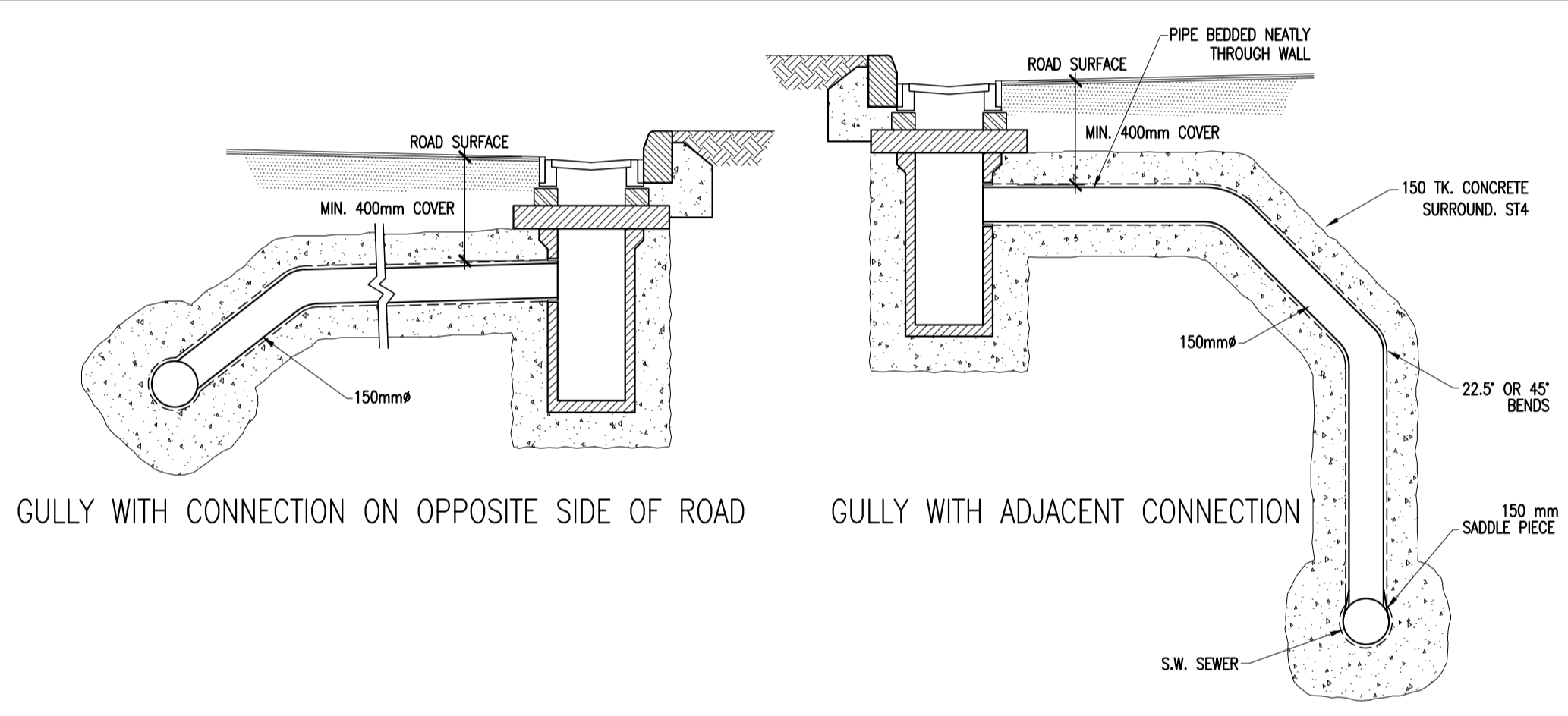
FLOW CONTROL MANHOLE DETAIL
SCALE 1:25

DETAIL 2A



NSBP003 BYPASS OIL SEPARATOR DETAIL
SCALE 1:25

DETAIL 2B



ROAD GULLY DETAILS
SCALE 1:25

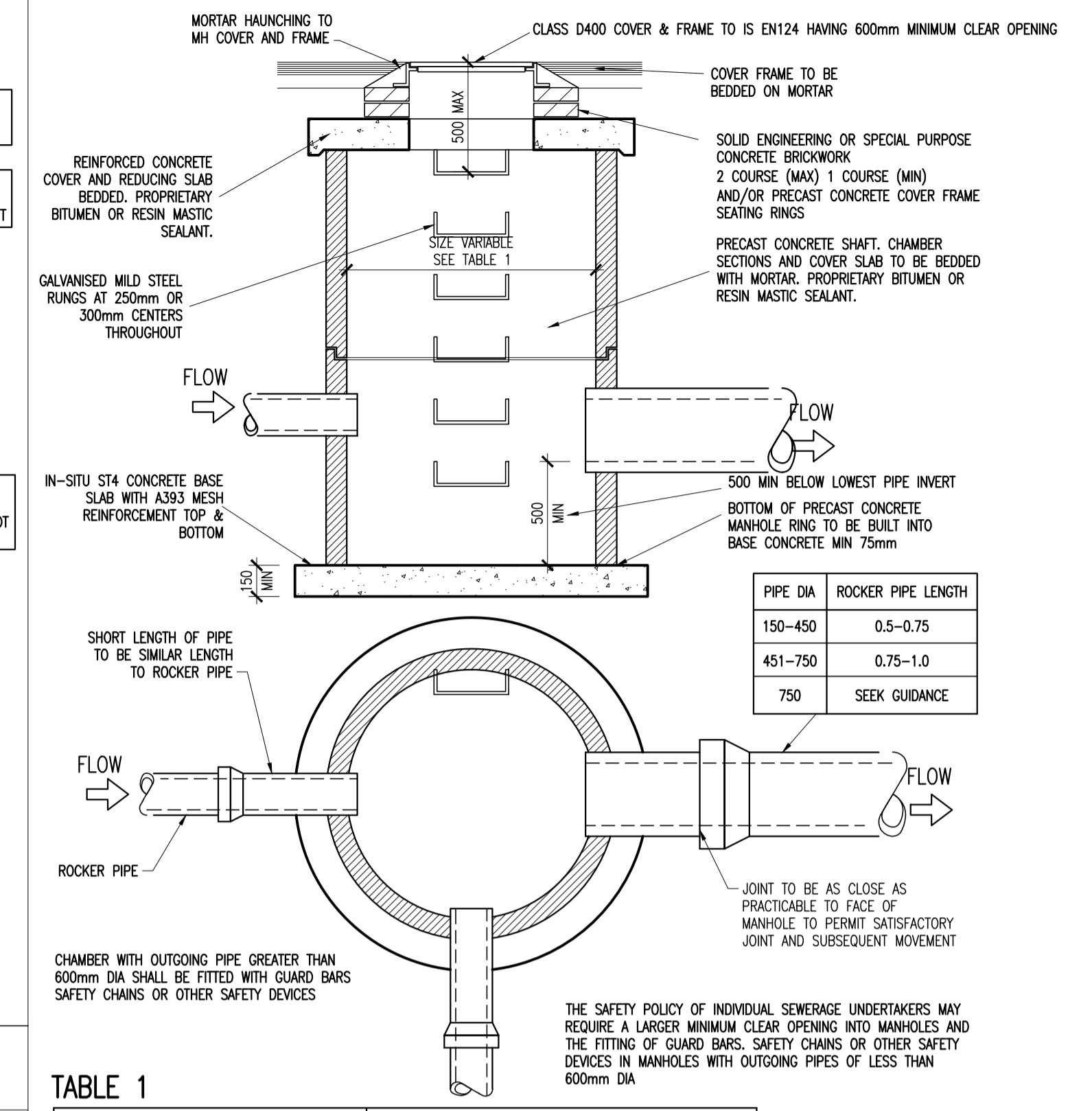
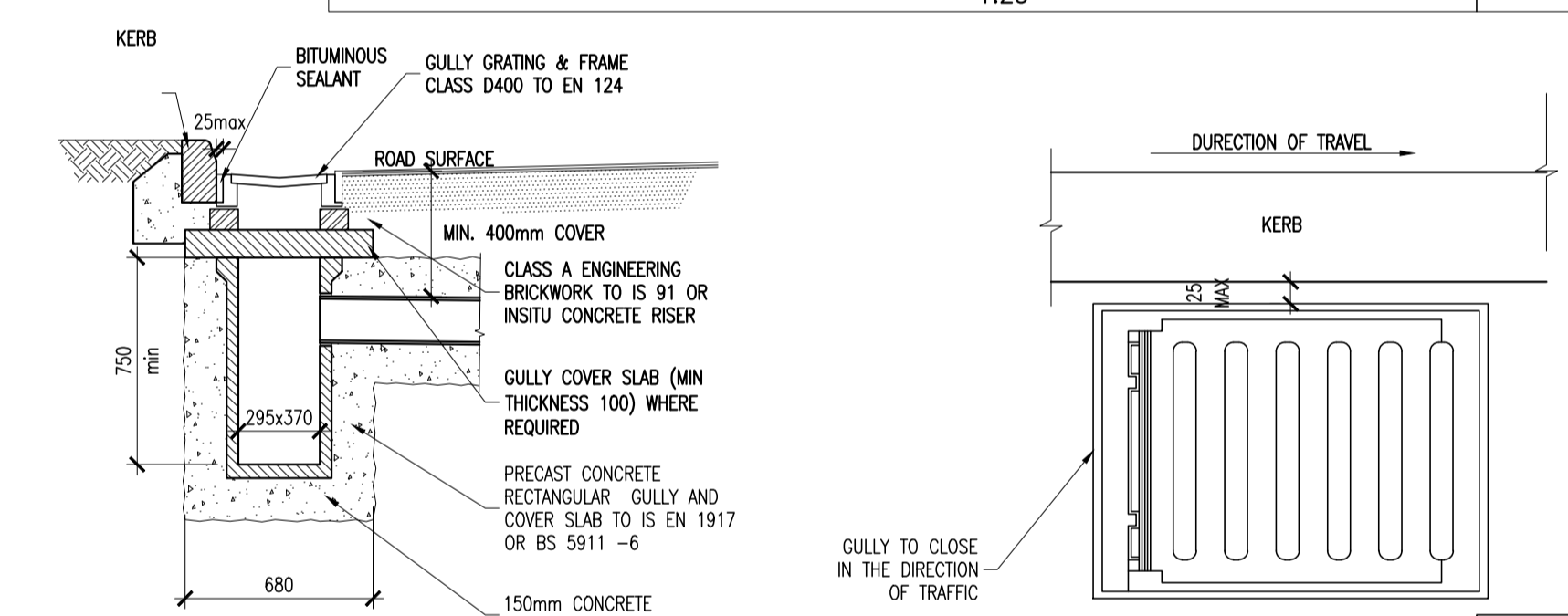


TABLE 1

DIAMETER OF LARGEST PIPE IN MANHOLE (mm)	CHAMBER SECTION DIAMETER (mm)
LESS THAN 375	1200 (1050 WHERE DEPTH TO SOFFIT IS 1.35m - 1.5m)
375 - 450	1350
500 - 700	1500
750 - 900	1800

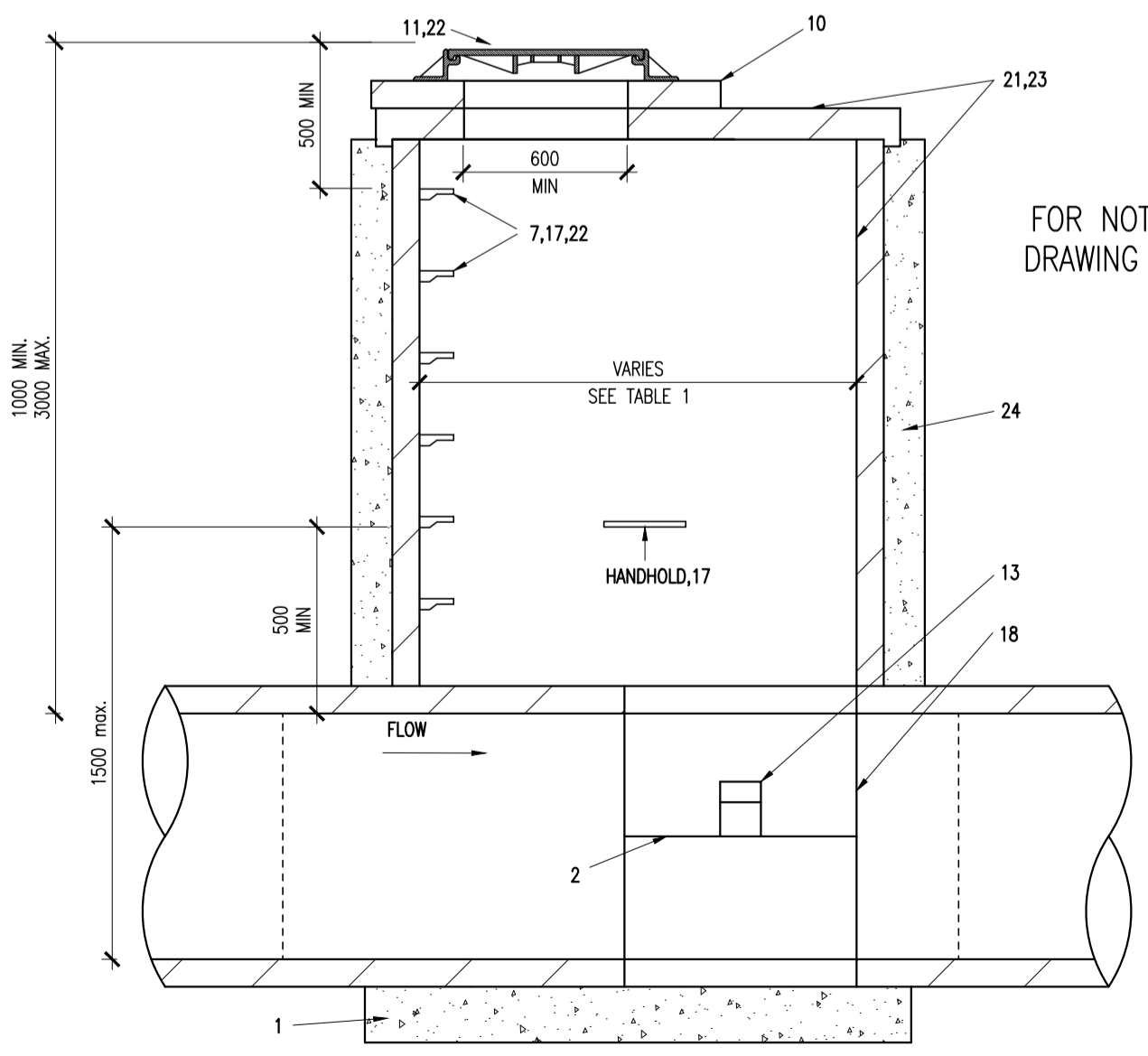
CATCHPIT MANHOLE DETAIL
1:25

DETAIL 2C



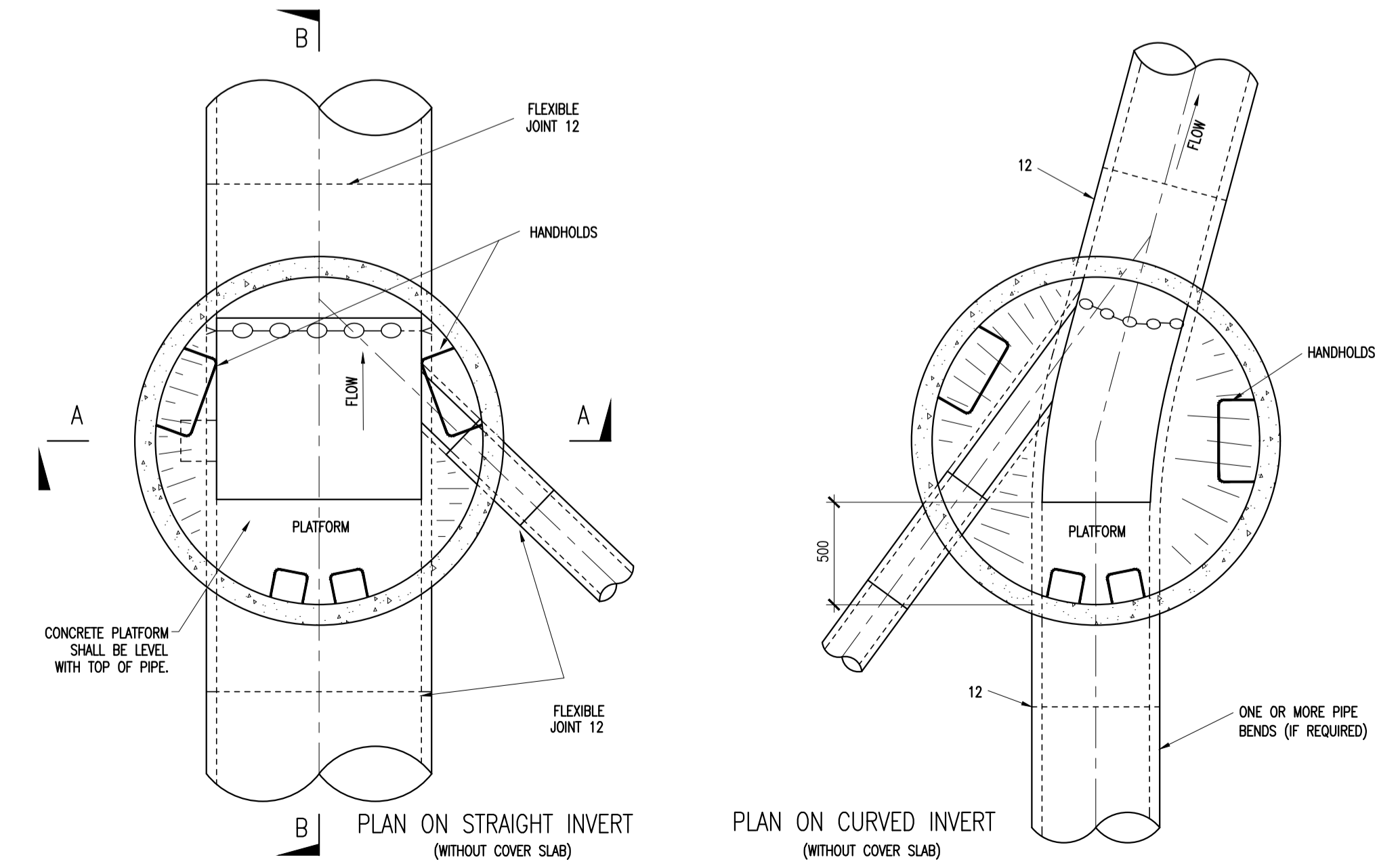
ROAD GULLY DETAILS SECTION

DETAIL 2D

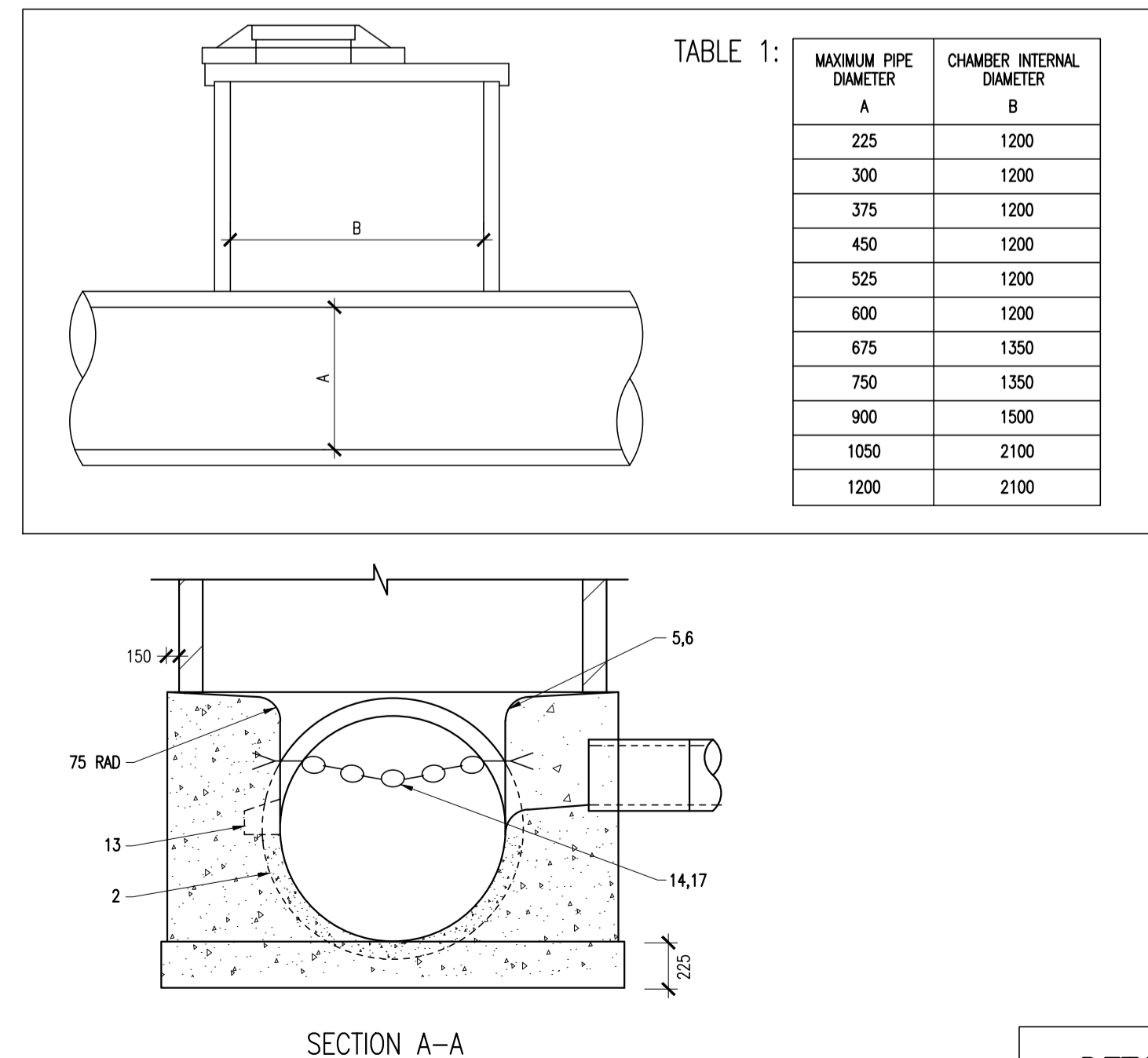


FOR NOTES REFER TO DRAWING 180159-3001

INTEGRAL IN-SITU 20N/20mm CONCRETE BASE WALLS, BENCHING AND BASE SLAB WITH PRECAST CHANNEL AS SHOWN OR IN-SITU FORMED INVERT AS ALTERNATIVE. WALLS TO EXTEND 150mm BEYOND OUTER FACES OF CHAMBER RING. ALTERNATIVELY PRECAST CONCRETE CHAMBER RINGS MAY BE BEDDED IN MORTAR OR IN SITU 20N/20mm CONCRETE BASE SLAB 300mm GREATER IN DIAMETER THAN CHAMBER RINGS.

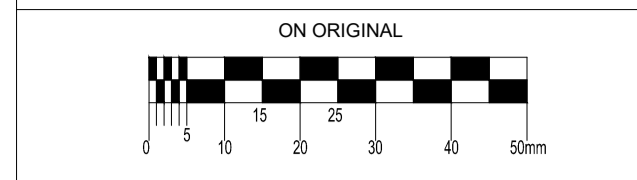


GREATER DUBLIN CODE OF PRACTICE FOR DRAINAGE WORKS TYPICAL MANHOLE DETAIL - TYPE J DEPTH TO SOFFIT 1 TO 3m



DETAIL 2E

© COPYRIGHT OF THIS DRAWING IS RESERVED BY DBFL CONSULTING ENGINEERS. NO PART SHALL BE REPRODUCED OR TRANSMITTED WITHOUT THEIR WRITTEN PERMISSION.



- NOTES:
- ALL WORKS TO BE CONSTRUCTED IN ACCORDANCE WITH NRA SPECIFICATION FOR ROADWORKS UNLESS OVERRIDDEN BY GREATER DUBLIN REGIONAL CODES OF PRACTICE FOR DRAINAGE WORKS AS AMENDED BY DUBLIN CITY COUNCIL.
 - ALL DRAWINGS TO BE CHECKED BY CONTRACTOR ON SITE AND ENGINEER INFORMED OF DISCREPANCIES BEFORE WORK COMMENCES.
 - ALL LEVELS ARE IN METRES AND ARE RELATED TO THE ORDINANCE DATUM.
 - CONTRACTOR SHALL SATISFY HIMSELF AS TO THE ACCURACY OF PAVEMENT LEVELS ON SITE PRIOR TO COMMENCEMENT OF WORKS.
 - ALL SURFACE WATER MANHOLES TO BE TAKEN IN CHARGE BY DCC TO BE BLOCKWORK OR IN SITU CONCRETE AS PER THE GREATER DUBLIN REGIONAL CODES OF PRACTICE FOR DRAINAGE WORKS AS AMENDED BY DUBLIN CITY COUNCIL.
 - ALL FOUL MANHOLES TO BE CONSTRUCTED IN ACCORDANCE WITH IRISH WATER'S CODE OF PRACTICE FOR WASTEWATER INFRASTRUCTURE.
 - ALL MANHOLES TO BE RETAINED IN PRIVATE OWNERSHIP TO BE PRE-CAST CONCRETE MANHOLES AS PER DRAINAGE DESIGN DETAILS.
 - RIGID PIPES SHALL MEAN CAST OR SPUN IRON, CONCRETE OR CLAY.
 - FLEXIBLE PIPES SHALL MEAN PIPES OF STEEL, PVC, OTHER PLASTIC OR DUCTILE IRON.
 - ROAD GULLY GRATINGS AND FRAMES SHALL COMPLY WITH THE REQUIREMENTS OF I.S./EN 124:1994. EACH GULLY AND FRAME SHALL HAVE MARKED CLEARLY THEREON:
 - I.S./EN 124:1994 - CLASS C250 OR CLASS D400 AS APPROPRIATE
 - THE NAME AND/OR IDENTIFICATION MARK OF THE MANUFACTURER AND THE PLACE OF MANUFACTURE.
 - THE YEAR OF MANUFACTURE.
 - MARK OF THE CERTIFICATION BODY
 - SEPARATORS TO BE INSTALLED IN ACCORDANCE WITH MANUFACTURERS/INSTRUCTIONS.

rev	date	description	BS	NJF
P01	02-12-20	PLANNING		

S2 - INFORMATION PLANNING

DBFL Consulting Engineers
Civil, Structural & Transportation Engineering
www.dbfl.ie

DUBLIN OFFICE: Ormond House, Upper Ormond Quay, Dublin 7, D07 W704
PHONE: +353 (0) 1 400 4000

CORK OFFICE: Phoenix House, Monahan Road, Cork, T12 H1KX
PHONE: +353 (0) 21 2054538

WATERFORD OFFICE: Suite 10 The Arkun, Marlboro Gate, Canada Street, Waterford, X91 W028
PHONE: +353 (0) 51 309 500

project ref. CASTLEFORBES DEVELOPMENT

drawing title TYPICAL DRAINAGE DETAILS SHEET 2

client GLENVEAGH

drawing no.	author	scale	sheet size
180159-3111	NJF	AS SHOWN	A1