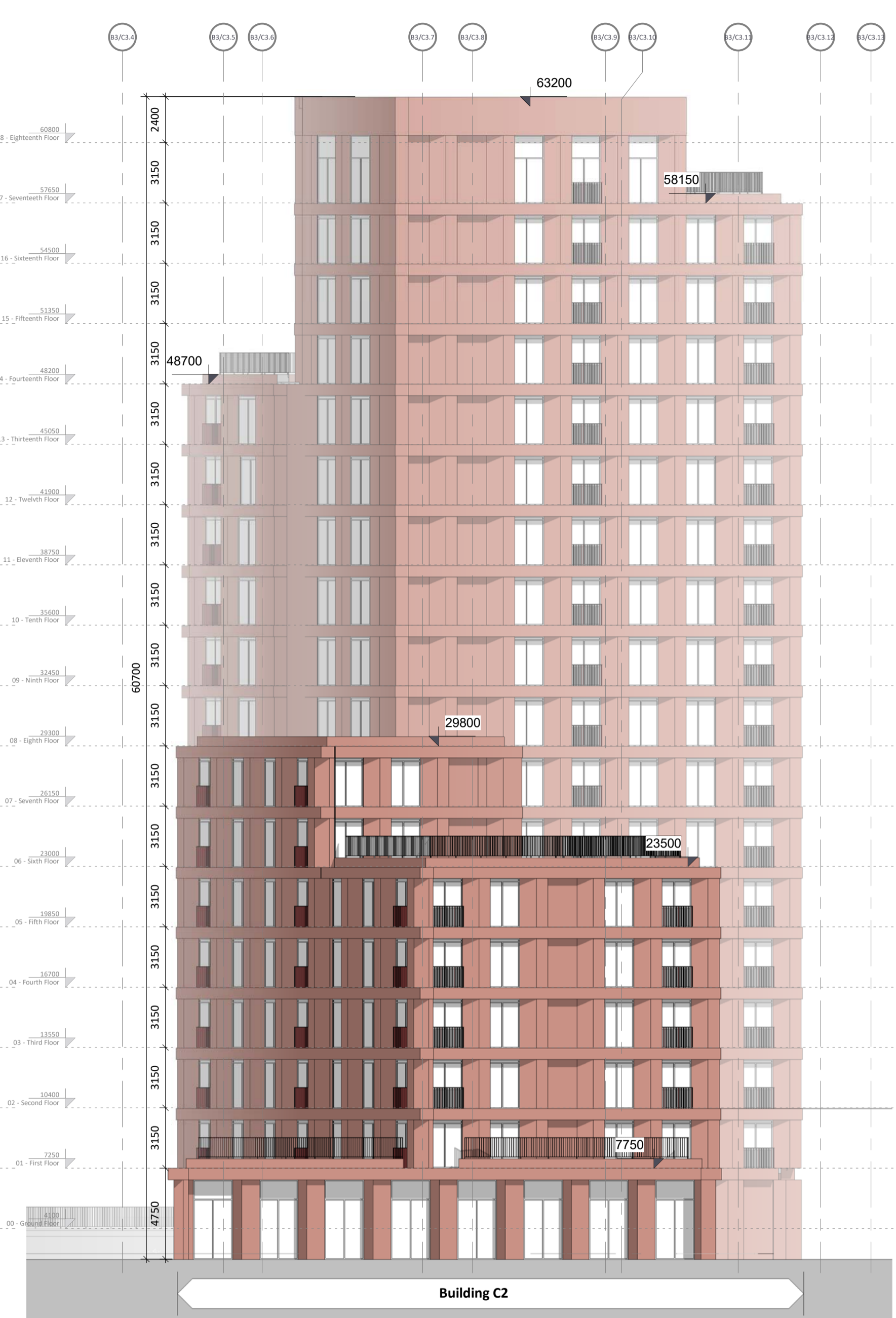




① Block C2-North West
1: 200



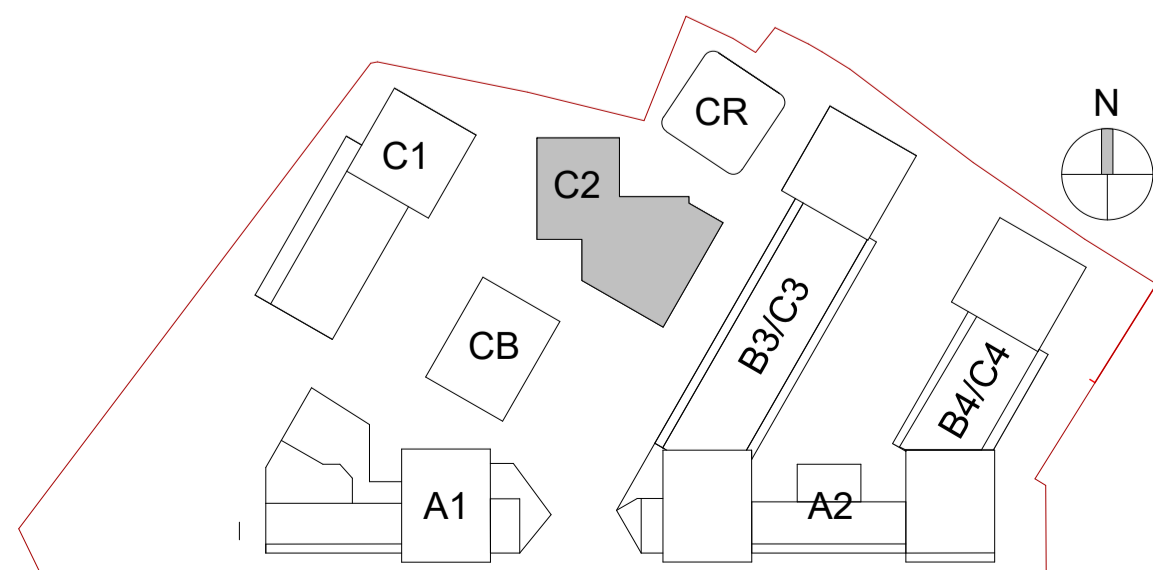
③ Block C2-North East
1: 200



② Block C2-East
1: 200

MATERIAL TAG	
1-	Brick Type A
2-	Brick Type B
3-	Brick Type C
4-	Brick Type D
5-	Selected Render
6-	Selected Aluminium Window System with Spandrel Panel
7-	Mild Steel Balustrade
8-	Metal (Gold)
9-	Metal (Red)
10-	Recon Stone Concrete (Grey)
11-	Precast Concrete (Red)
12-	Concrete
13-	Timber Louver
14-	Steel
15-	Polycarbonate Panel
16-	Render Gold

Block C2 Elevations - North & East



Revision Description	Date	Rev. No.	Issued by
SHD Lodgment to ABP	01-12-20	1	JM

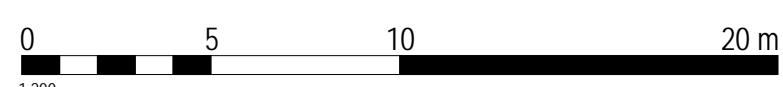
omahony pike

architecture | urban design | Dublin | Cork
 email: info@omahonypike.com | The Chapel | One South Mall
 tel: +353 1 202 7400 | Mount St. Anne's | Cork City
 fax: +353 1 283 0822 | Milltown, Dublin 6 | Co. Cork
 www.omahonypike.com | D06 XNS2 Ireland | T12 CCN3 Ireland

Project: Castleforbes SHD
 Location: Castleforbes, Sheriff Street Upper, Dublin
 Client: Glenveagh Living

Project Code: 1826
 Project Lead: JM
 Drawn By: SW
 Job No.: 1826
 Purpose: Planning
 Scale @ A1: 1 : 200
 Date: 01-12-20
 Revision: 1
 Status: 50

Drawing Title: Block C2 Elevations - North & East
 Drawing No.: 1826-OMP-C2-ZZ-DR-A-2000



Figured dimensions only to be used. This drawing is copyright of O'Mahony Pike Architects Ltd. All information is shared as per approved use in accordance with ISO19650-2:2018, Table 5; Standard Codes for Suitability of Models and Documents and the BEP. If the 'Status' field is empty, this information has been shared at 50 - WIP.

Source file: 1826-OMP-C2-ZZ-DR-A-0001.rvt