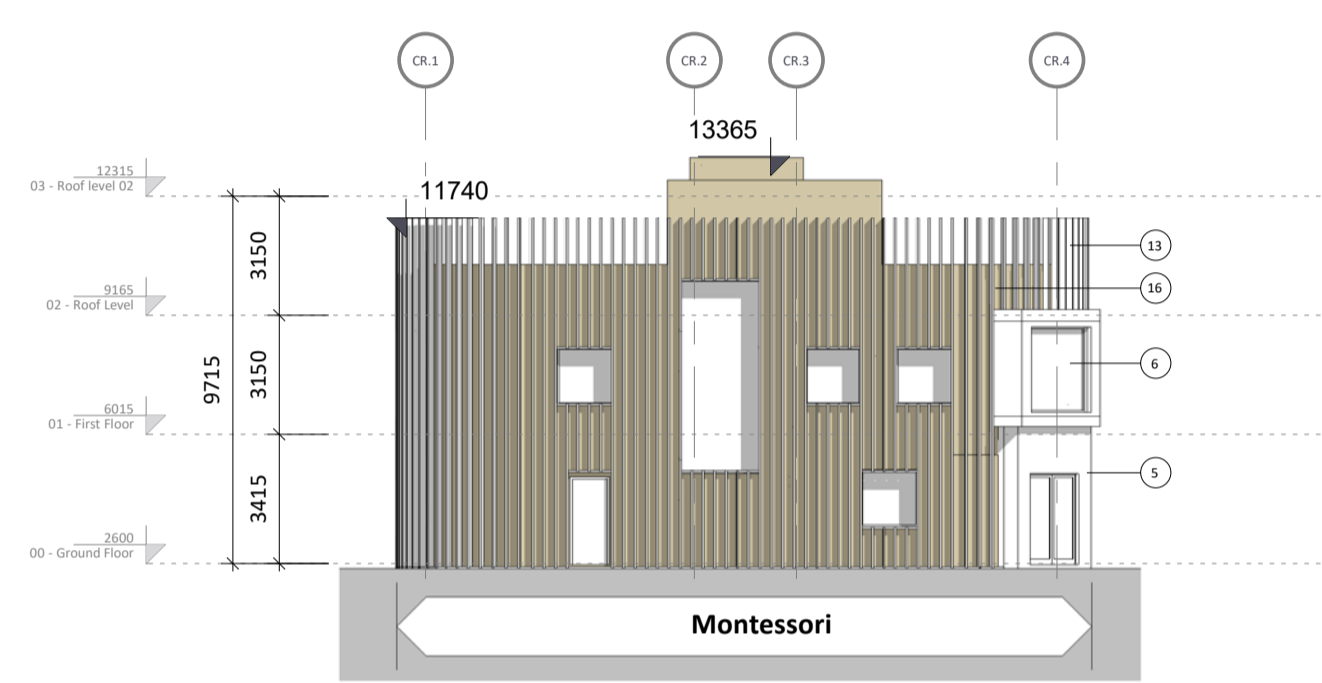
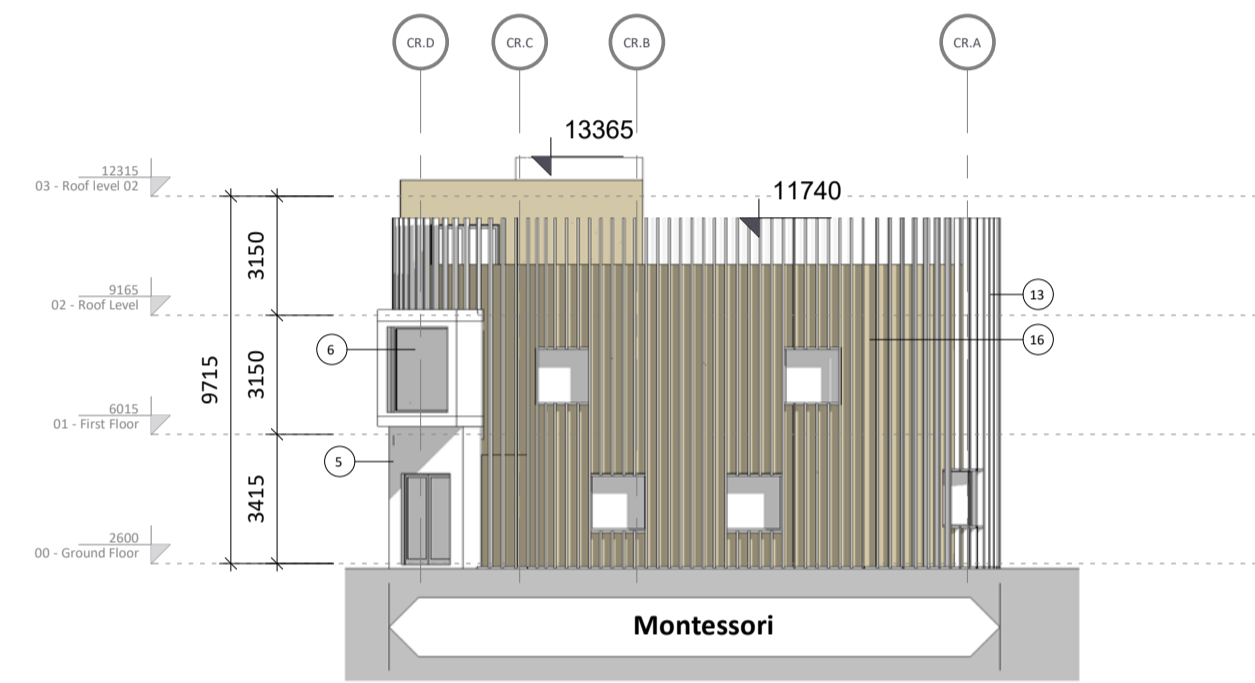


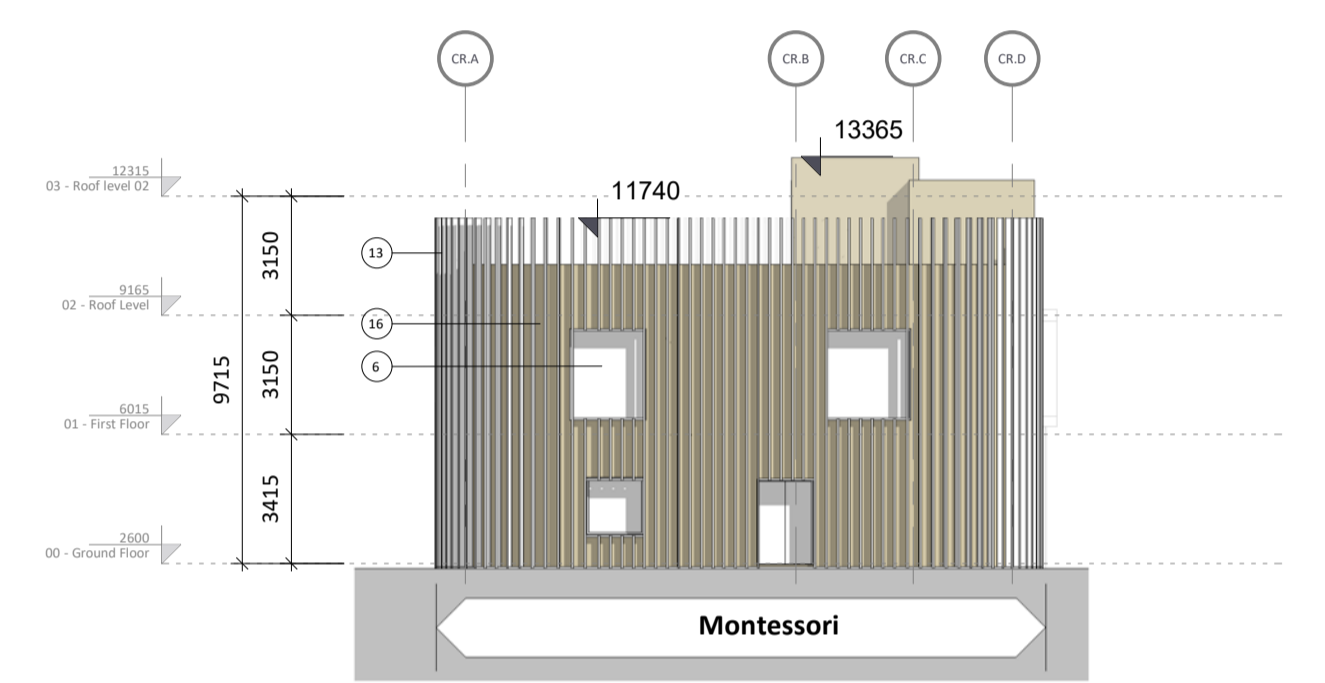
1 Child Care Facility - North
1 : 200



3 Child Care Facility - South
1 : 200



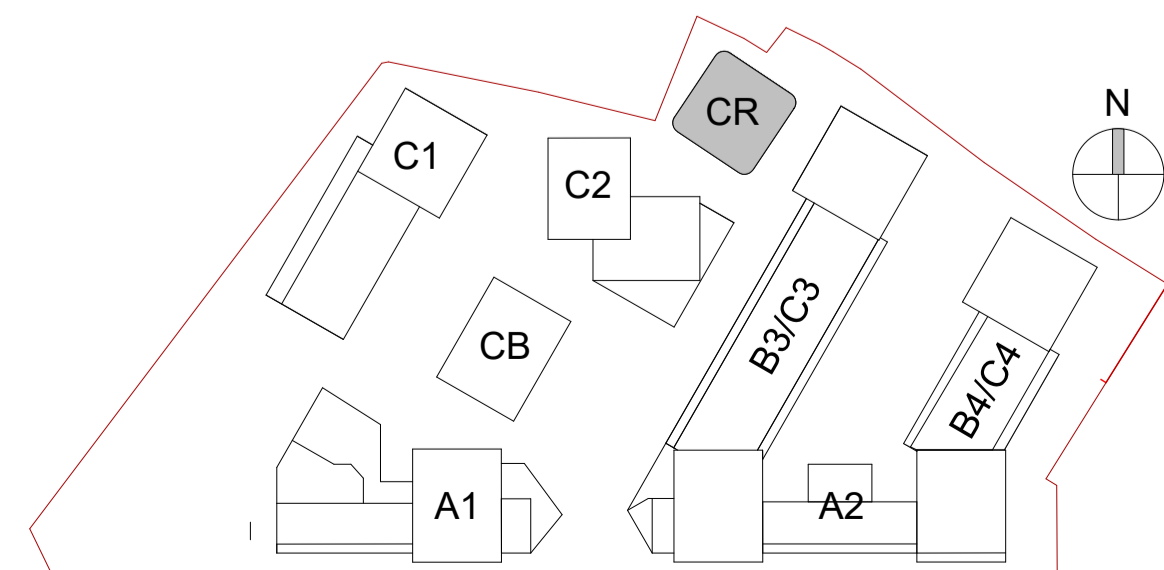
2 Child Care Facility - East
1 : 200



4 Child Care Facility - West
1 : 200

| MATERIAL TAG | |
|--------------|--|
| 1- | Brick Type A |
| 2- | Brick Type B |
| 3- | Brick Type C |
| 4- | Brick Type D |
| 5- | Selected Render |
| 6- | Selected Aluminium Window System with Spandrel Panel |
| 7- | Mild Steel Balustrade |
| 8- | Metal (Gold) |
| 9- | Metal (Red) |
| 10- | Recon Stone Concrete (Grey) |
| 11- | Precast Concrete (Red) |
| 12- | Concrete |
| 13- | Timber Louver |
| 14- | Steel |
| 15- | Polycarbonate Panel |
| 16- | Render Gold |

Child Care Facility Elevations



| Revision Description | Date | Rev. No. | Issued by |
|----------------------|----------|----------|-----------|
| SHD Lodgment to ABP | 01-12-20 | 1 | JM |
| | | | |
| | | | |
| | | | |
| | | | |
| | | | |
| | | | |
| | | | |
| | | | |
| | | | |

omahony pike

Project Code: 1826
Scale @ A1: 1 : 200

Project Lead: JM
Date: 01-12-20

Drawn By: SW
Revision: 1

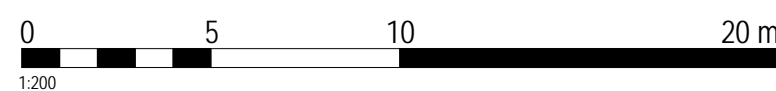
Job No.: 1826
Status: 50

Purpose: Planning

architecture | urban design | Dublin | Cork
 email: info@omahonypike.com | The Chapel | One South Mall
 tel: +353 1 202 7400 | Mount St. Anne's | Cork City
 fax: +353 1 283 0822 | Milltown, Dublin 6 | Co. Cork
 www.omahonypike.com | D06 XNS2 Ireland | T12 CCN3 Ireland

Project: Castleforbes SHD
 Location: Castleforbes, Sheriff Street Upper, Dublin
 Client: Glenveagh Living

Drawing Title: Child Care Facility Elevations
 Drawing No.: 1826-OMP-CR-ZZ-DR-A-2000



Figured dimensions only to be used. This drawing is copyright of O'Mahony Pike Architects Ltd. All information is shared as per approved use in accordance with ISO19650-2:2018, Table 5; Standard Codes for Suitability of Models and Documents and the BEP. If the 'Status' field is empty, this information has been shared at 50 - WIP.

Source file: 1826-OMP-CR-ZZ-DR-A-2000.rvt