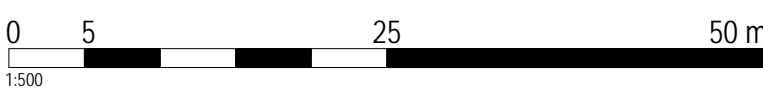
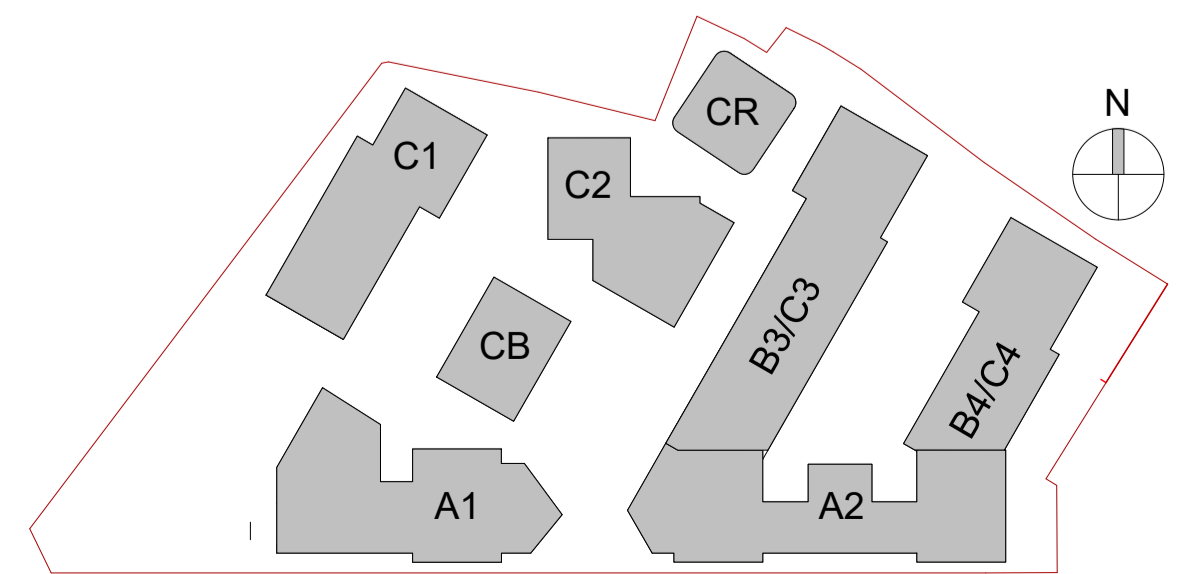


MATERIAL TAG	
1-	Brick Type A
2-	Brick Type B
3-	Brick Type C
4-	Brick Type D
5-	Selected Render
6-	Selected Aluminium Window System with Spandrel Panel
7-	Mild Steel Balustrade
8-	Metal (Gold)
9-	Metal (Red)
10-	Recon Stone Concrete (Grey)
11-	Precast Concrete (Red)
12-	Concrete
13-	Timber Louver
14-	Steel
15-	Polycarbonate Panel
16-	Render Gold

North & East Site Elevation



Revision Description	Date	Rev. No.	Issued by
SHD Lodgment to ABP	01-12-20	1	JM

omahony pike

Project Code: 1826
Scale @ A1: As indicated

Project Lead: JM
Date: 01-12-20

Drawn By: WD
Revision: 1

Job No.: 1826
Status: 50

Purpose: Planning

architecture | urban design
Dublin
email: info@omahonypike.com
tel: +353 1 202 7400
fax: +353 1 283 0822
www.omahonypike.com

Cork
The Chapel
Mount St. Anne's
Milltown, Dublin 6
D06 XNS2 Ireland

One South Mall
Cork City
Co. Cork
T12 CCN3 Ireland

Project: Castleforbes SHD
Location: Castleforbes, Sheriff Street Upper, Dublin
Client: Glenveagh Living

Drawing Title: North & East Site Elevation
Drawing No.: 1826-OMP-ZZ-ZZ-DR-A-2000

Figured dimensions only to be used. This drawing is copyright of O'Mahony Pike Architects Ltd. All information is shared as per approved use in accordance with ISO19650-2:2018, Table 5; Standard Codes for Suitability of Models and Documents and the BEP. If the 'Status' field is empty, this information has been shared at 50 - WIP.

Source file: 1826-OMP-ZZ-ZZ-DR-A-0001.rvt