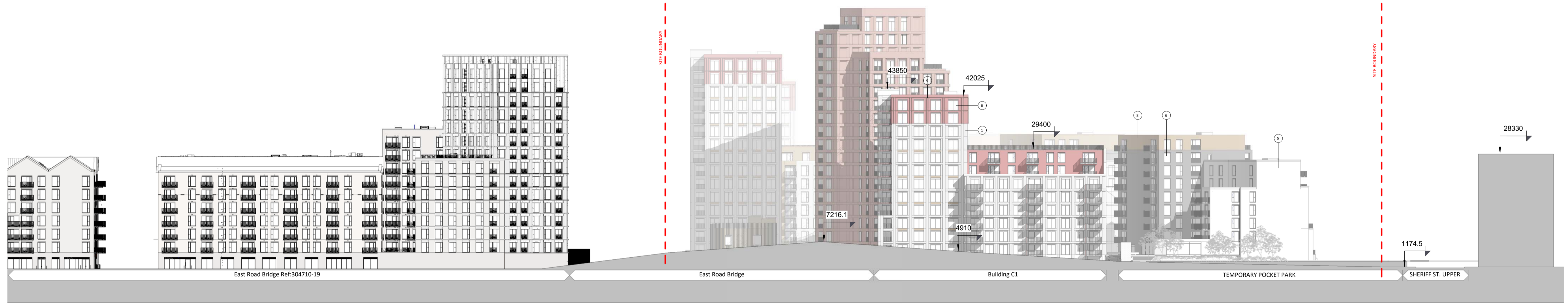


18 - Eighteenth Floor	60800
17 - Seventeenth Floor	57850
16 - Sixteenth Floor	54900
15 - Fifteenth Floor	51950
14 - Fourteenth Floor	49000
13 - Thirteenth Floor	46050
12 - Twelfth Floor	43100
11 - Eleventh Floor	40150
10 - Tenth Floor	37200
09 - Ninth Floor	34250
08 - Eighth Floor	31300
07 - Seventh Floor	28350
06 - Sixth Floor	25400
05 - Fifth Floor	22450
04 - Fourth Floor	19500
03 - Third Floor	16550
02 - Second Floor	13600
01 - First Floor	10650
00 - Ground Floor	7700
00 - Site Level East	4750



1 Site Section A-A
1 : 500

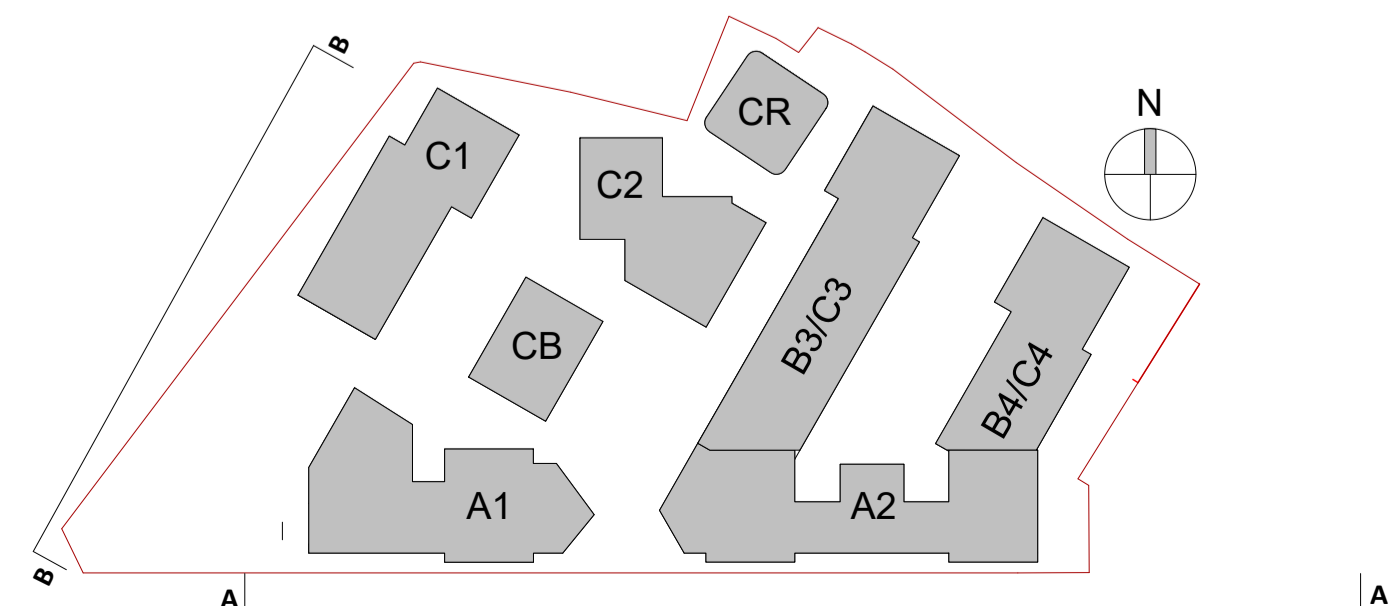
18 - Eighteenth Floor	60800
17 - Seventeenth Floor	57850
16 - Sixteenth Floor	54900
15 - Fifteenth Floor	51950
14 - Fourteenth Floor	49000
13 - Thirteenth Floor	46050
12 - Twelfth Floor	43100
11 - Eleventh Floor	40150
10 - Tenth Floor	37200
09 - Ninth Floor	34250
08 - Eighth Floor	31300
07 - Seventh Floor	28350
06 - Sixth Floor	25400
05 - Fifth Floor	22450
04 - Fourth Floor	19500
03 - Third Floor	16550
02 - Second Floor	13600
01 - First Floor	10650
00 - Ground Floor	7700



2 Site Section B-B
1 : 500

MATERIAL TAG	
1-	Brick Type A
2-	Brick Type B
3-	Brick Type C
4-	Brick Type D
5-	Selected Render
6-	Selected Aluminium Window System with Spandrel Panel
7-	Mild Steel Balustrade
8-	Metal (Gold)
9-	Metal (Red)
10-	Recon Stone Concrete (Grey)
11-	Precast Concrete (Red)
12-	Concrete
13-	Timber Louver
14-	Steel
15-	Polycarbonate Panel
16-	Render Gold

Site Section A-A & B-B



Revision Description	Date	Rev. No.	Issued by
SHD Lodgment to ABP	01-12-20	1	JM

omahony pike

architecture | urban design
 email: info@omahonypike.com
 tel: +353 1 202 7400
 fax: +353 1 283 0822
 www.omahonypike.com

Dublin
 The Chapel
 Mount St. Anne's
 Milltown, Dublin 6
 D06 XNS2 Ireland

Cork
 One South Mall
 Cork City
 Co. Cork
 T12 CCN3 Ireland

Project Code: 1826
 Project Lead: JM
 Drawn By: WD
 Job No.: 1826
 Purpose: Planning

Scale @ A1: As indicated
 Date: 01-12-20
 Revision: 1
 Status: 50

Project: Castleforbes SHD
 Location: Castleforbes, Sheriff Street Upper, Dublin
 Client: Glenveagh Living

Drawing Title: Site Section A-A & B-B
 Drawing No.: 1826-OMP-ZZ-ZZ-DR-A-3000



Figured dimensions only to be used. This drawing is copyright of O'Mahony Pike Architects Ltd. All information is shared as per approved use in accordance with ISO19650-2:2018, Table 5; Standard Codes for Suitability of Models and Documents and the BEP. If the 'Status' field is empty, this information has been shared at 50 - WIP.

Source file: 1826-OMP-ZZ-ZZ-DR-A-0001.rvt