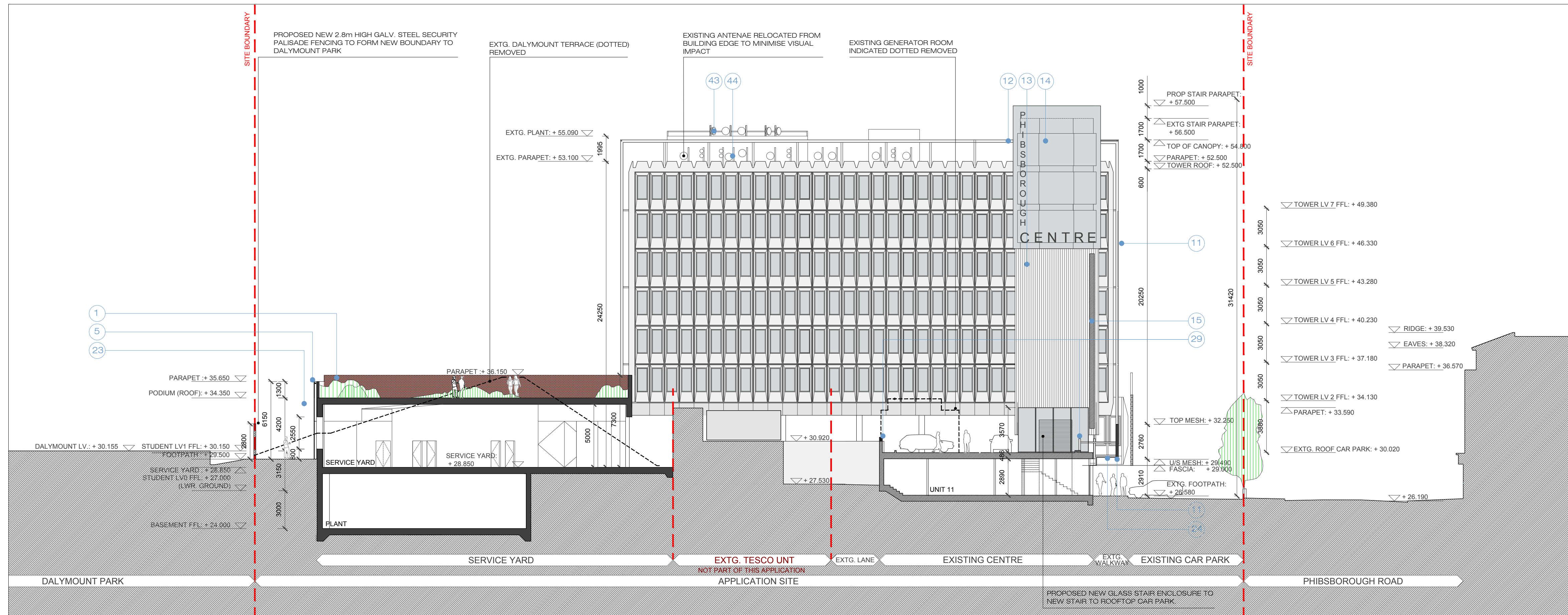
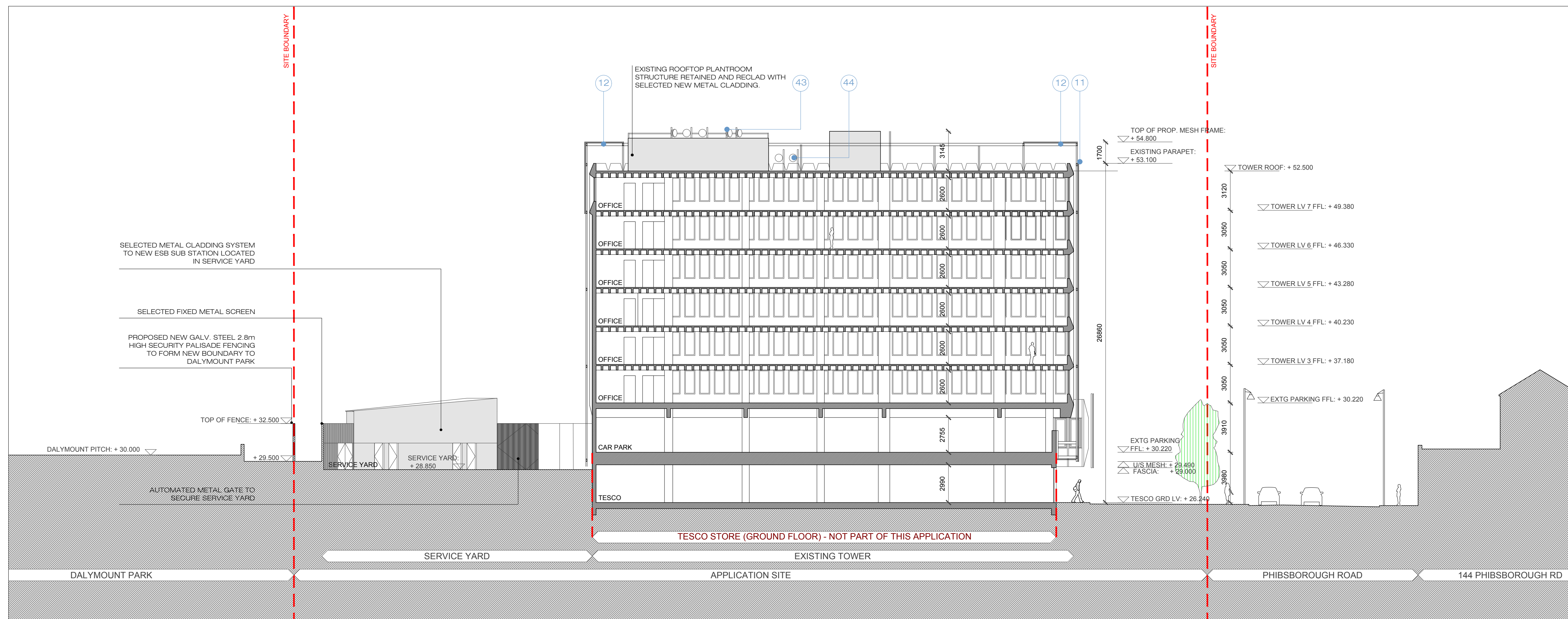


KEYPLAN



SECTION G-G



SECTION H-H

GENERAL NOTES

1. THIS DRAWING IS FOR PLANNING APPLICATION PURPOSES ONLY.
2. THIS DRAWING SHALL BE READ IN CONJUNCTION WITH ALL ACCOMPANYING DRAWINGS/REPORTS SUBMITTED WITH THE PLANNING APPLICATION. ANY DISCREPANCIES TO BE NOTIFIED TO DONNELLY TURPIN ARCHITECTS.
3. ALL DIMENSIONS INDICATED ARE SUBJECT TO SITE SURVEY
4. COPYRIGHT RETAINED BY DONNELLY TURPIN ARCHITECTS.

NOTES:

- | |
|---|
| <ol style="list-style-type: none"> 1. SELECTED (RED) BRICK 2. SELECTED DECORATIVE PERFORATED BRICKWORK WITH ALTERNATING RECESSED BRICK COURSING 3. ANODISED ALUMINIUM INSULATED CLADDING PANEL 4. CONTINUOUS STAINLESS STEEL CHANNEL 5. PRESSED ANODISED ALUMINIUM PARAPET CAPPING 6. PROJECTING DOUBLE GLAZED ALUMINIUM FRAMED BAY WINDOW (CLEAR GLASS) 7. RECESSED DOUBLE GLAZED ALUMINIUM FRAMED WINDOW 8. ANODISED ALUMINIUM INSULATED SPANDREL PANEL 9. DOUBLE GLAZED ALUMINIUM FRAMED WINDOW (7 DENOTES OPAQUE TRANSLUCENT GLASS) 10. ANODISED ALUMINIUM INSULATED PANELS / GREENING VENTS (7 DENOTES FIXED FLUSH WITH BRICK) 11. SELECTED DECORATIVE EXPANDED METAL BRACKETRY 12. PAINTED MILD STEEL FRAMED CANOPY STRUCTURE WITH EXPANDED METAL (ALUMINIUM) INFILL PANELS 13. SELECTED TRANSLUCENT POLYCARBONATE LIGHTWEIGHT CLADDING 14. SELECTED STOVE DRAHCELLED (COLOURED) GLASS CLADDING 15. CONTINUOUS NARROW SLOT IN CLADDING CLADDING/SCREENS 16. CONTINUOUS FRAMELESS GLAZED SHOPFRONT TO EXISTING SHOP UNITS 17. CONTINUOUS NEW ALUMINIUM SIGNAGE FASCIA 18. POWDER COATED SIGNAGE FOR CENTRE APPLIED DIRECTLY TO EXPANDED METAL 19. FRAMELESS GLAZED ENTRANCE DOORS 20. ATM MACHINE (RETAINED) 21. EXISTING PRE-CAST CONCRETE CLADDING PANELS (RETAINED) 22. EXISTING ORIGINAL WINDOWS 23. SELECTED FIXED/SLIDING SHEET METAL CLADDING/SCREENS 24. EXPANDED METAL CANOPY WITH SOLID METAL INFILL PANELS 25. PERIMETER PLANTING EDGE WITH BALUSTRADE AND METAL-CLAD UPSTAND 26. ALUMINIUM CLAD CANTILEVERED CANOPY AT MAIN ACCESS DOOR 27. SELECTED BRICK SOFFIT CLADDING 28. SELECTED GREEN SEDUM ROOF FINISH 29. EXISTING BALUSTRADE RAISED TO MEET PART OF THE T.O.D. 30. ALUMINIUM FRAMED FIXED DOUBLE GLAZED ROOF LIGHT 31. FULL HEIGHT SELECTED CURTAIN WALL SYSTEM WITH ANODISED ALUMINIUM FINISH 32. ANODISED ALUMINIUM FREEHOLDING LOWERED PANEL TO MATCH GLAZING SYSTEM 33. ALUMINIUM BRISE SOLEIL WITH ANODISED ALUMINIUM PARAPET UPSTAND, FASCIA AND CAPPING 34. PRESSED ANODISED ALUMINIUM STRING COURSE PART OF GLAZING SYSTEM 35. SELECTED TERRA-COTTA POWDER COATED ALUMINIUM VERTICAL FINS INTEGRATED AS PART OF GLAZING SYSTEM 36. SELECTED POWDER COATED RAIN SCREEN METAL CLADDING SYSTEM 37. SELECTED POWDER COATED STEEL DOORSET 38. GALVANNESED OPEN STEEL GATE 39. STEEL FRAMED GATE WITH SELECTED SOLID VERTICAL NATIVE TIMBER SLATS 40. BITUMINOUS BASED FLAT MEMBRANE ROOF WITH SELECTED AGGREGATE BALLAST 41. CONTINUOUS FRAMELESS GLAZED SHOPFRONT TO NEW RETAIL / COMMERCIAL 42. SELECTED NATURAL (DRY) STONE WALL CLADDING 43. HIGH LEVEL ANTENNAE LOWERED, SET BACK FROM EXISTING PARAPET EDGE AND RECONFIGURED 44. LOW LEVEL ANTENNAE MOVED BACK OUT OF NEW TELECOMMUNICATIONS EXCLUSION ZONE 45. SELECTED POWDER COATED ALUMINIUM SLATED DOOR AND SIDE PANEL INTEGRATED AS PART OF GLAZING SYSTEM 46. SELECTED 8-STEEL HANDRAIL/BALUSTRADE 47. SELECTED SOLID VERTICAL NATIVE TIMBER SLATS |
|---|

REV #	DATE	NAME	NOTES

PROJECT		PHIBSBOROUGH SHOPPING CENTRE NEW DEVELOPMENT & REFURBISHMENT OF EXISTING CENTRE	
STAGE		PLANNING	
JOB NO.		1826	
SCALE		1:200 @ A1	
DRAWING		EXISTING PERMITTED SECTION G-G & H-H	
DATE		NOVEMBER 2020	
<p>DONNELLY TURPIN ARCHITECTS 56 CAMDEN STREET LOWER, DUBLIN 2 TEL: (+353) 1 475 9065 FAX: (+353) 1 4988564 E-MAIL: projects@donnellyturpin.com</p>			