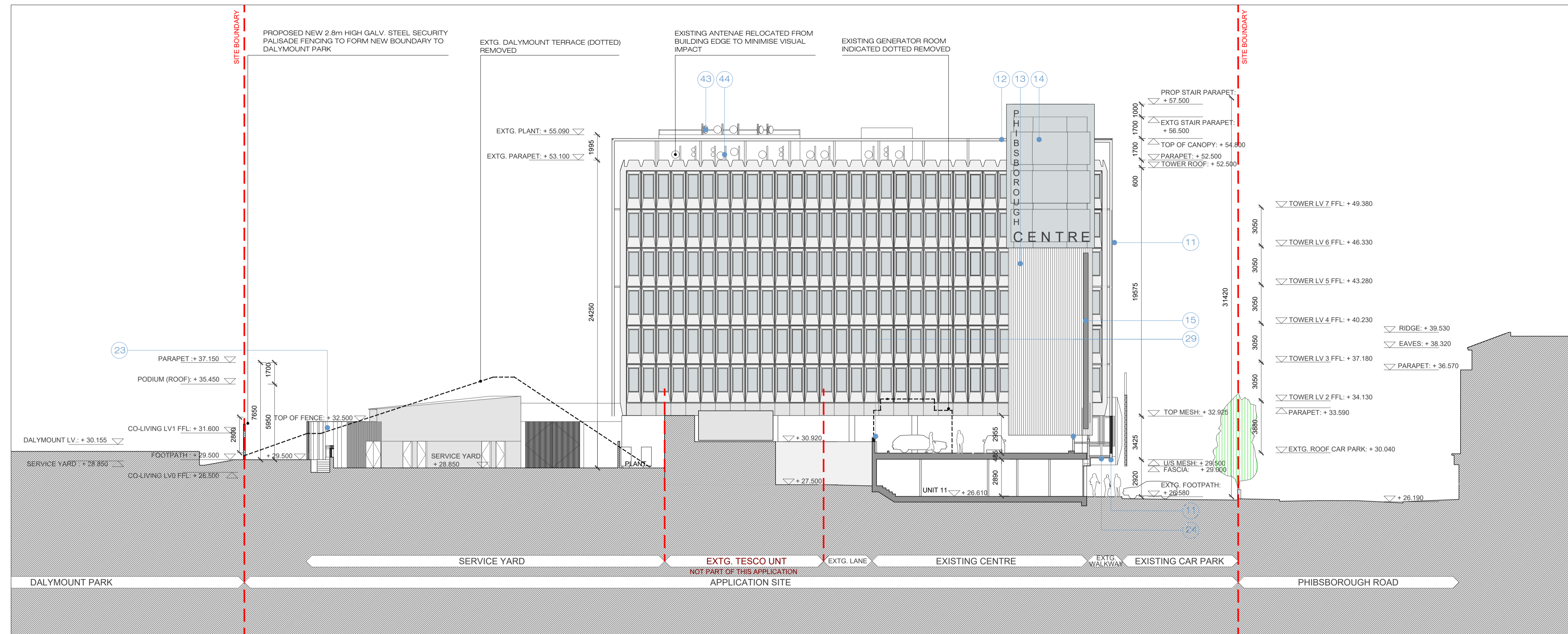
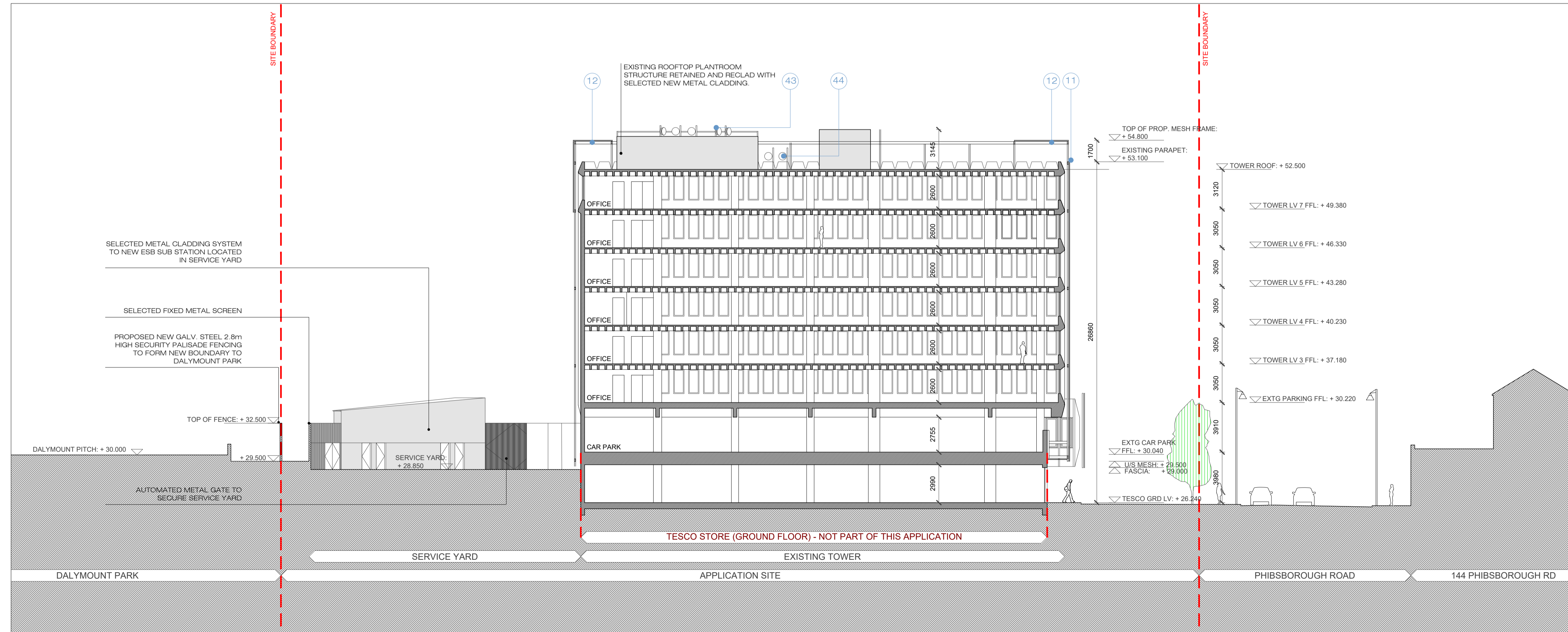


KEYPLAN



SECTION G-G



SECTION H-H

GENERAL NOTES

1. THIS DRAWING IS FOR PLANNING APPLICATION PURPOSES ONLY.
2. THIS DRAWING SHALL BE READ IN CONJUNCTION WITH ALL ACCOMPANYING DRAWINGS/REPORTS SUBMITTED WITH THE PLANNING APPLICATION. ANY DISCREPANCIES TO BE NOTIFIED TO DONNELLY TURPIN ARCHITECTS.
3. ALL DIMENSIONS INDICATED ARE SUBJECT TO SITE SURVEY
4. COPYRIGHT RETAINED BY DONNELLY TURPIN ARCHITECTS.

NOTES:

1. SELECTED (RED) BRICK
2. SELECTED DECORATIVE PERFORATED BRICKWORK WITH ALTERNATING RECESSED BRICK COURSE
3. ANODISED ALUMINIUM INSULATED CLADDING PANEL
4. CONTINUOUS STAINLESS STEEL CHANNEL
5. PRESSED ANODISED ALUMINIUM PARAPET CAPPING
6. PROJECTING DOUBLE GLAZED ALUMINIUM FRAMED BAY WINDOW (CLEAR GLASS)
7. RECESSED DOUBLE GLAZED ALUMINIUM FRAMED WINDOW
8. ANODISED ALUMINIUM INSULATED SPANDREL PANEL
9. DOUBLE GLAZED ALUMINIUM FRAMED WINDOW (T DENOTES TRANSPARENT GLASS)
10. ANODISED ALUMINIUM INSULATED PANELS / OPENING VENTS (T DENOTES FIXED FLUSH WITH BRICK)
11. SELECTED DECORATIVE EXPANDED METAL (ALUMINIUM) CLADDING WITH S/STEEL BRACKETRY
12. PAINTED MILD STEEL FRAMED CANOPY STRUCTURE WITH EXPANDED METAL (ALUMINIUM) INFILL PANELS
13. SELECTED TRANSLUCENT POLYCARBONATE LIGHTWEIGHT CLADDING
14. SELECTED STOVE DIAMELLED (COLOURED) GLASS CLADDING
15. CONTINUOUS NARROW SLOT IN CLADDING TO HOUSE PANEL ANTENNAE
16. CONTINUOUS FRAMELESS GLAZED SHOPFRONT TO EXISTING SHOP UNITS
17. CONTINUOUS NEW ALUMINIUM SIGNAGE FASCIA
18. POWDER COATED SIGNAGE FOR CENTRE APPLIED DIRECTLY TO EXPANDED METAL STRUCTURE WITH EXPANDED METAL PART K OF THE TOP
19. FRAMELESS GLAZED ENTRANCE DOORS
20. ATM MACHINE (RETAINED)
21. EXISTING PRE-CAST CONCRETE CLADDING PANELS (RETAINED)
22. EXISTING ORIGINAL WINDOWS
23. SELECTED FIXED/SIDING SHEET METAL CLADDING SCREENS
24. EXPANDED METAL CANOPY WITH SOLID METAL INFILL PANELS
25. PERIMETER PLANTING EDGE WITH BALUSTRADE AND METAL-CLAD UPSTAND
26. POWDER COATED ALUMINIUM LOUVERES
27. SELECTED BRICK SOFFIT CLADDING
28. SELECTED 'GREEN' SEDUM ROOF FINISH
29. EXISTING BALUSTRADE RAISED TO MEET PART K OF THE TOP
30. ALUMINIUM FRAMED FIXED DOUBLE GLAZED
31. FULL HEIGHT SELECTED CURTAIN WALL SYSTEM WITH ANODISED ALUMINIUM FINISH
32. ANODISED ALUMINIUM FIXED/SIDE-HUNG COVERED PANEL TO MATCH GLAZING SYSTEM
33. ALUMINIUM BRISE SOLEL WITH ANODISED ALUMINIUM PARAPET UPSTAND, FASCIA AND CAPPING
34. PRESSED ANODISED ALUMINIUM STRING COURSE PART OF GLAZING SYSTEM
35. SELECTED TERRA-COTTA POWDER COATED ALUMINIUM VERTICAL FINS INTEGRATED AS PART OF GLAZING SYSTEM
36. SELECTED POWDER COATED RAIN SCREEN
37. SELECTED POWDER COATED STEEL DOORSET
38. GALVANISED OPEN STEEL GATE
39. STEEL FRAMED GATE WITH SELECTED SOLID VERTICAL NATIVE TIMBER SLATS
40. BTUMINOUS BASED FLAT MEMBRANE ROOF WITH SELECTED AGGREGATE BALLAST
41. CONTINUOUS FRAMELESS GLAZED SHOPFRONT TO NEW RETAIL / COMMERCIAL
42. SELECTED NATURAL (DRY) STONE WALL CLADDING
43. HIGH LEVEL ANTENNAE LOWERED, SET BACK FROM EXISTING PARAPET EDGE AND RECONFIGURED
44. LOW LEVEL ANTENNAE MOVED BACK OUT OF NEW TELECOMMUNICATIONS EXCLUSION ZONE
45. SELECTED POWDER COATED ALUMINIUM SLATED DOOR AND SIDE PANEL INTEGRATED AS PART OF GLAZING SYSTEM
46. SELECTED S/STEEL HANDRAIL BALUSTRADE
47. SELECTED SOLID VERTICAL TIMBER SLATS
48. P.V. PANELS
49. DECORATIVE S/STEEL CABLE/ROPE SCREENING/GUARDING WITH MILD STEEL FRAMED STRUCTURE
50. 1.5m HIGH GLASS BALUSTRADE
51. 2.4m HIGH GLASS SCREEN

REV #	DATE	NAME	NOTES
-	-	-	-

PROJECT			
PHIBSBOROUGH SHOPPING CENTRE NEW DEVELOPMENT & REFURBISHMENT OF EXISTING CENTRE			
DONNELLY TURPIN ARCHITECTS 56 CAMDEN STREET LOWER, DUBLIN 2 TEL: (+353) 1 475 9065 FAX: (+353) 1 4988564 E-MAIL: projects@donnellyturpin.com			
STAGE	SCALE	DRAWING	DATE
PLANNING	1:200 @ A1	PROPOSED SECTION G-G & H-H	NOVEMBER 2020
JOB NO.	DWG NO.	REV.	DATE
1826	P 03_23	-	NOVEMBER 2020