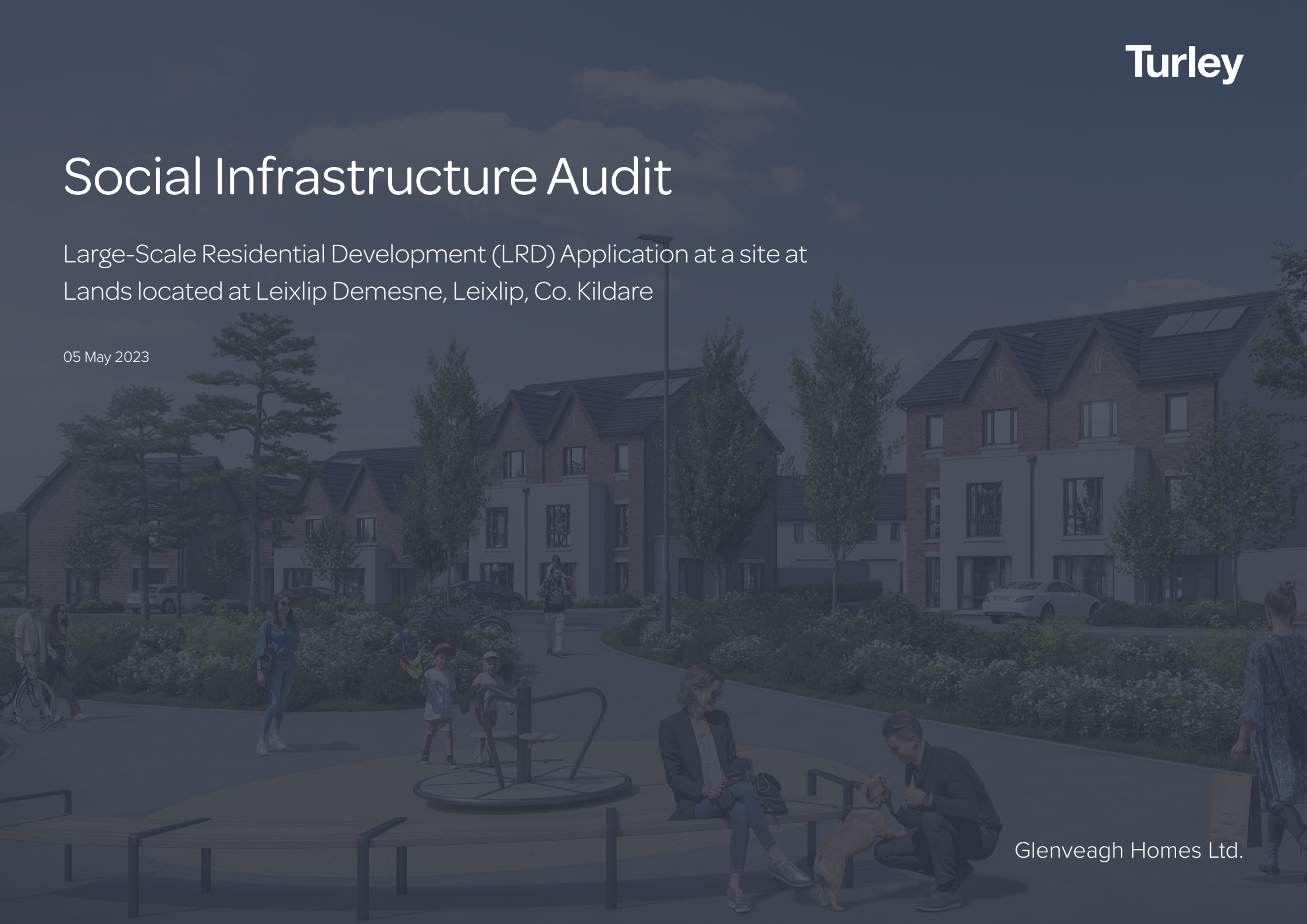


Social Infrastructure Audit

Large-Scale Residential Development (LRD) Application at a site at
Lands located at Leixlip Demesne, Leixlip, Co. Kildare

05 May 2023



Applicant

Glenveagh Homes Ltd.

Agent

Turley

T: 01 5175 856

E: info@turleyplanning.ie

Turley

Contents

	Executive Summary	3
1.	Introduction	4
2.	Methodology	6
3.	Policy Context	11
4.	Community Profile	19
5.	Existing Social Infrastructure	20
6.	Conclusion	78

Executive Summary

This Social Infrastructure Audit (SIA) has identified and established the capability of the existing provision of social infrastructure within the study area to support the needs of the existing population and offered insights into the likelihood of the capacity of the existing services and facilities to support the future residents of the proposed development.

The SIA identified a significant range of services and facilities which contribute to quality of life within close proximity to the subject site. Overall, 288 social infrastructure services and facilities were identified within the study area; the largest area of which is childcare and education and training.

While an extensive provision of social infrastructure was identified, it is important to continually ensure good accessibility to quality services and facilities, inclusive of but not limited to health services and facilities, education facilities and community and sports and recreation facilities.

The proposed development will notably contribute to ensuring good accessibility to quality services and facilities by providing a crèche and a strategic amenity area with play equipment as part of the overall development.

Although the existing childcare facilities in the locality could accommodate the majority of the childcare demand generated by the proposed development, the proposal includes a crèche to meet the childcare demand generated by the proposed development.

In addition, the proposed development will provide for a playground, outdoor gym equipment and an informal playing field at the location identified in the Leixlip LAP. It is also highlighted to Louth CoCo that additional equipped play spaces will be provided throughout the subject site to facilitate the future residents of the development and surrounding area.

In conclusion, the proposed crèche and strategic amenity area, and existing social infrastructure provisions within close proximity to the subject site are capable of serving the future residents of the proposed development.

1. Introduction

Glenveagh Homes Ltd.¹ (Applicant) intend to apply for permission for a Large-Scale Residential Development (LRD) at this site at the lands north of the M4 at Leixlip Demesne, Co. Kildare. The site is bounded by the Celbridge Road (R404) to the west, existing residential developments of Leixlip Park and Wogansfield to the north, the M4 Motorway to the south, and greenfield sites currently used for livestock grazing to the east (see **Figure 1.1** and **Figure 1.2**).

In summary, the proposed development will consist of inter alia 237 no. residential units, a crèche, a strategic amenity area and all associated works.

To support the LRD Application, Turley² (Agent) were appointed to prepare a Social Infrastructure Audit (SIA).

Social infrastructure relates to the provision of services and facilities which are essential for health, well-being, and social development of a town / place. Social infrastructure facilities include a wide range of services and amenities that contribute to quality of life, such as education, health services and community specific services. They also encompass active sports and passive recreational activities located strategically in order to facilitate social and community interactions.

The purpose of this SIA is to:

- Review of the existing national, regional and local planning policy context in relation to the provision of social infrastructure;
- Review of the existing community profile of Leixlip and the surrounding area;
- Identify the location and quantity of existing social infrastructure in Leixlip and catchment area; and
- Summarise the key findings within the study area.



Figure 1.1: Site Location (indicative subject site outlined in red)

Source: Google Earth – Turley annotations

¹ Digital Office Centre, Block B, Straffan Rd, Moneycooly, Maynooth, Co. Kildare

² 4 Pembroke Street Upper, Dublin D02 VN24



Figure 1.2: Site Layout Plan - Creche Located in the West of the Subject Site

Source: MCORM

Social Infrastructure Audit

Leixlip Demesne LRD - Lands located at Leixlip Demesne, Leixlip, Co. Kildare

2. Methodology

The study area for this SIA was determined by applying a 5km radius (as the crow flies), i.e., equivalent of c.10-15 minutes travel time by car, from the subject site's main entrance onto the Celbridge Road (R404) to ensure that the identified existing and proposed childcare facilities can be accessed via a number of transport options including *inter alia* walking, cycling and driving (see **Figure 2.1**). A particular focus was also given to the settlement of Leixlip (as defined in Census 2016) in which the subject site is located.

Figure 2.2 and **Figure 2.3** illustrate the bus network that operates within the local area, with **Figure 2.4** illustrating the cycle network within the area. These networks will provide the future residents of the proposed development with access to the social infrastructure identified in this SIA.

With regards to the obtaining of data, the SIA adopted a number of techniques to collate baseline information, before undertaking an analysis to inform several recommendations. These techniques included a site visit and the collation and analysis of qualitative and quantitative information in respect of social infrastructure.

A desktop study was undertaken to identify, detail and analyses relevant national, regional and local planning policy and guidance associated with the SIA.

A desktop study was also undertaken to investigate the existing community profile of Leixlip and the catchment area. The community profile includes data on the following: demography; household composition and family cycle; accommodation and home ownership; employment and professional qualifications; mobility; health and deprivation; and general employment profiles.

A site visit, desktop study and use of digital mapping techniques were used to identify the location and quantity of existing social infrastructure in Leixlip and catchment area. The research conducted was categorised under the following headings: education and training; childcare facilities; health; sports and recreation; social; arts and culture; faith; and other (post offices, credit unions, banks etc.)

With regards to the obtaining of data, the following sources were consulted in the preparation of this report, including *inter alia*:

- Kildare County Development Plan 2023-2029;
- Leixlip Local Area Plan 2020-2023;
- Childcare Facilities: Guidelines for Planning Authorities (2001);
- Tusla Reports;
- OBAL maps;
- Census 2016; and
- Google Maps

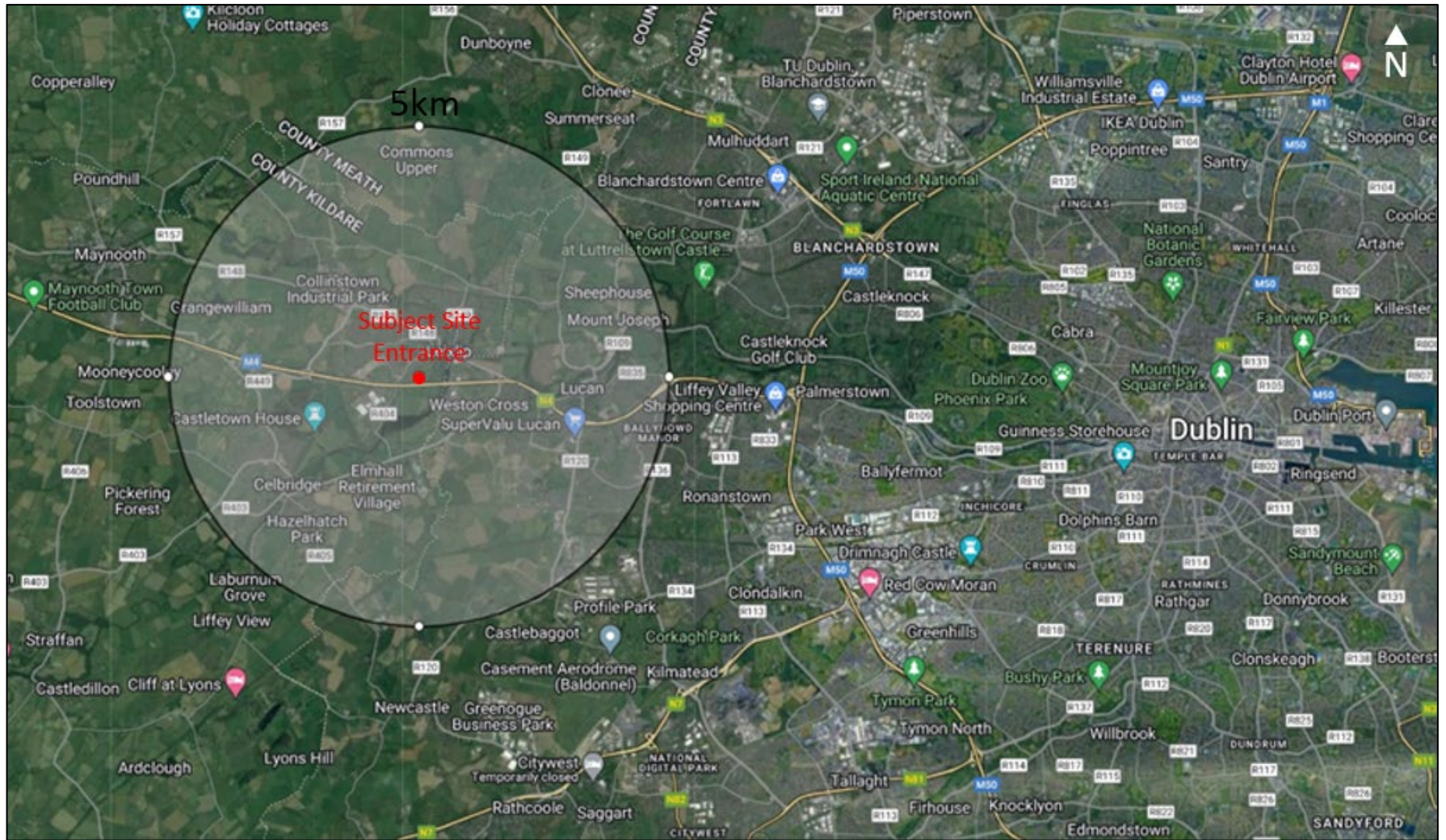


Figure 2.1: Radius of 5km (as the crow flies) from the Subject Site's main entrance onto the Celbridge Road (R404)

Source: Google Maps – Turley annotation

Social Infrastructure Audit

Leixlip Demesne LRD - Lands located at Leixlip Demesne, Leixlip, Co. Kildare



Figure 2.2: Bus Network in Leixlip and Celbridge

Source: BusConnects – Annotated by Turley

Social Infrastructure Audit

Leixlip Demesne LRD - Lands located at Leixlip Demesne, Leixlip, Co. Kildare

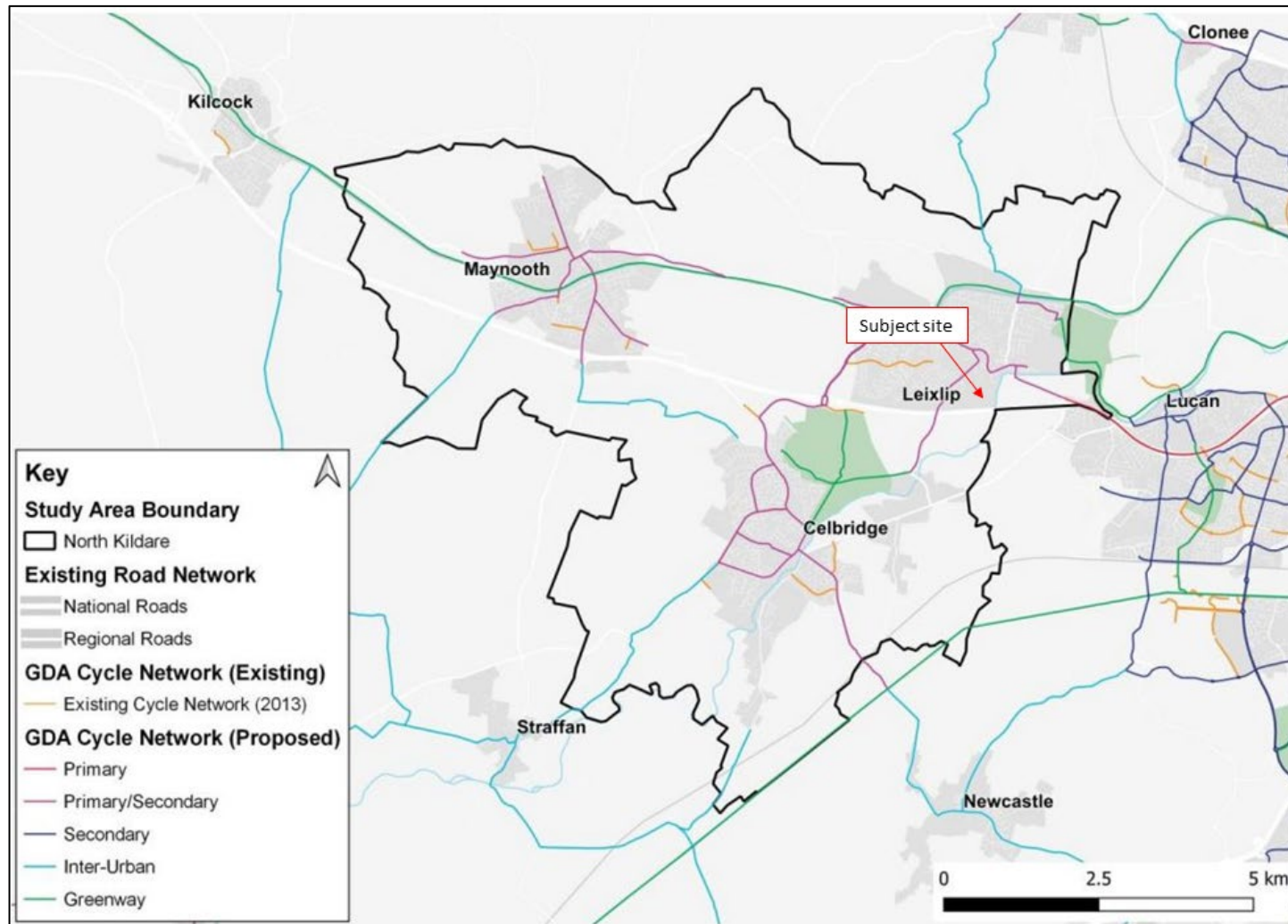


Figure 2.4: Cycle Network in North Kildare

Source: GDA Cycle Network Plan – Annotated by Turley

Social Infrastructure Audit

Leixlip Demesne LRD - Lands located at Leixlip Demesne, Leixlip, Co. Kildare

3. Policy Context

For the purposes of this SIA, Turley reviewed national, regional, and local planning policy documents relating to the provision of social infrastructure. The following sections provide an overview of these documents and identify the relevant policies contained therein.

3.1 National Policy

3.1.1 Project Ireland 2040: National Planning Framework

Project Ireland 2040 - National Planning Framework (NPF) was published by the Department of Housing, Planning and Local Government in February 2018. It sets out the overarching policy and planning framework for the country's social, economic and cultural development. *Project Ireland 2040: National Development Plan* (NDP) sets out the investment priorities that will underpin the implementation of the NPF.

In relation to the Eastern and Midland Region, in which the subject site is location, one of the key future planning and development and place-making policy priorities of the NPF is to put:

“...more emphasis on consolidating the development of places that grew rapidly in the past decade or so with large scale commuter driven housing development with a particular focus on addressing local community and amenity facility provision in many of the larger commuter towns through targeted investment under relevant NPF National Strategic Outcomes”.

With regards to social infrastructure, and more specifically childcare and education, the following objective of the NPF is of relevance:

“National Policy Objective 31 - “Prioritise the alignment of targeted and planned population and employment growth with investment in:

- A childcare / ECCE planning function, for monitoring, analysis and forecasting of investment needs, including identification of regional priorities;*
- The provision of childcare facilities and new and refurbished schools on well located sites within or close to existing built-up areas, that meet the diverse needs of local populations;*
- The expansion and consolidation of Higher Education facilities, particularly where this will contribute to wider regional development, and*
- Programmes for life-long learning, especially in areas of higher education and further education and training where skills gaps are identified.”*

‘National Strategic Outcome 10: Access to Quality Childcare, Education and Health Services’ also aims to ensure good accessibility to high-quality healthcare, childcare, and educational facilities through compact and thriving urban areas which deliver competitive, prosperous and a wider range of accessible services more efficiently.

3.1.2 Childcare Facilities - Guidelines for Planning Authorities (2001)

The *Childcare Facilities – Guidelines for Planning Authorities (2001)* (Childcare Guidelines), provide a framework to planning authorities for the preparation of forward planning documents, set a standard for assessing planning applications in respect of childcare facilities, and provide guidance to developers and childcare providers in formulating development proposals.

The Childcare Guidelines define childcare as:

“...full day-care and sessional facilities and services for pre-school children and school-going children out of school hours. It includes services involving care, education and socialisation opportunities for children. Thus, services such as pre-schools, naíonraí (Irish language playgroups), day-care services, crèches, playgroups, and after-school groups are encompassed by these Guidelines. Conversely childminding, schools, (primary, secondary and special) and residential centres for children are not covered by these Guidelines”

In the interest of sustainable communities, it is an objective of the Childcare Guidelines to promote childcare facilities in the following locations:

- *“New communities / Larger new housing developments [i.e. for new housing areas, an average of one childcare facility for each 75 dwellings would be appropriate.];*
- *The vicinity of concentrations of work places, such as industrial estates, business parks and any other locations where there are significant numbers working;*

- *In the vicinity of schools;*
- *Neighbourhood, District and Town Centres; and*
- *Adjacent to public transport corridors, park-and-ride facilities, pedestrian routes and dedicated cycle ways”.*

3.2 Regional Policy

3.2.1 Eastern and Midland Regional Assembly – Regional Spatial & Economic Strategy 2019-2031

The Eastern and Midland Regional Assembly prepared the *Regional Spatial and Economic Strategy (RSES) 2019-2031* for the Eastern and Midland Region of Ireland, in which the study area is located

The RSES sets out a 12-year strategic regional development framework for the Eastern and Midland Region. The primary aim of the RSES is to implement the objectives of the NPF at regional level and to support NPF policy for achieving balanced regional development. The high-level vision of the RSES is:

“To create a sustainable and competitive region that supports the health and wellbeing of our people and places, from urban to rural, with access to quality housing, travel and employment opportunities for all.”

At its core, the RSES reflects the region's settlement hierarchy, which identifies the key areas for population and employment growth along

with investments in infrastructure and services to meet current and future needs.

The wider Dublin Metropolitan Area (DMA) metropolitan area covers the continuous built-up city area and surrounding urbanised settlements, including Leixlip. Leixlip is also situated within the Dublin Metropolitan Area Strategic Plan (MASP) area, an integrated land use and transportation strategy for the Dublin Metropolitan Area which support and promote planned development of strategic developments areas.

The RSES recognises that the availability and accessibility of services and facilities has a profound impact on physical and mental health, wellbeing, and quality of life.

Successful places support a wide range of services and facilities including healthcare services, education facilities and community / recreational facilities that meet local and strategic needs and contribute towards a good quality of life.

In supporting this growth, the RSES sets the following policy objectives with regards to social infrastructure:

“Regional Policy Objective 9.13 – Local authorities and relevant agencies shall ensure that new social infrastructure developments are accessible and inclusive for a range of users by adopting a universal design approach and provide for an age friendly society in which people of all ages can live full, active, valued and healthy lives.”

“Regional Policy Objective 9.14 – Local authorities shall seek to support the planned provision of easily accessible social,

community, cultural and recreational facilities and ensure that all communities have access to a range of facilities that meet the needs of the communities they serve.”

“Regional Policy Objective 9.16 – Local authorities shall support the objectives of public health policy including Healthy Ireland and the National Physical Activity Plan, through integrating such policies, where appropriate and at the applicable scale, with planning policies contained in development plans.”

“Regional Policy Objective 9.19 – Support the implementation of Local Authority Local Economic and Community Plans, in collaboration with Local and Economic Development Committees (LCDCs) and through the use of spatial planning policies, to seek to reduce the number of people in or at risk of poverty and social exclusion in the Region.”

“Regional Policy Objective 9.20 – Support investment in the sustainable development of the Region’s childcare services as an integral part of regional infrastructure to include:

- Support the Affordable Childcare Scheme.*
- Quality and supply of sufficient childcare places.*
- Support initiatives under across Government Early Years Strategy.*
- Youth services that support and target disadvantaged young people and improve their employability.”*

“Regional Policy Objective 9.21 – In areas where significant new housing is proposed, an assessment of need regarding schools provision should be carried out in collaboration with the Department of Education and Skills and statutory plans shall designate new school sites at accessible, pedestrian, cycle and public transport friendly locations.”

3.3 Local Policy

3.3.1 Kildare County Development Plan 2023-2029

The Kildare County Development Plan 2023-2029 (Development Plan) was adopted on 28 January 2023. Therefore, the future development of the subject site is governed by the Development Plan.

This Social Infrastructure Audit has been prepared in accordance with Objective SC O16 of the Development Plan which:

“SC O16 – Require residential schemes of 20 units or greater to submit a Social Infrastructure Audit which shall determine how the capacity of the assessed infrastructure will be affected by the proposed increase in population. Where a deficit is identified, the developer will be required to make provisions / submit proposals to address such deficits.”

Chapter 10 – Community Infrastructure and Creative Places of the Development Plan focuses on community / social infrastructure including community centres / halls, libraries, cultural facilities, places of worship, burial grounds, schools, childcare facilities, healthcare facilities,

playgrounds, sports, and other recreational facilities. This chapter describes several principles to promote social inclusion, cultural development, and the provision of community facilities, including *inter alia*:

- *“Ensuring sufficient and appropriately zoned land is identified through the relevant Local Area Plans and village plans to meet community infrastructure requirements over the period of this Plan”.*
- *“Promoting the retention and enhancement of existing community services”.*
- *“Requiring the provision of services and facilities in tandem with and during the early phases of new housing developments (e.g, shops, businesses, schools, childcare, recreational/sports areas, and community centres)”.*
- *“Requiring the provision of neighbourhood centres and community facilities within walking distance of and concurrent with new residential development and promoting the use of shared facilities”.*
- *“Using the Council’s Development Contribution Scheme to provide benefits to the community, including the provision of open space, recreational facilities, and community facilities”.*
- *“Facilitating the provision of access and facilities for people with disabilities and the integration of ethnic-minority groups in the county”.*

- *“Promoting the development of, and access to, public transport and safe pedestrian and cycle routes”.*
- *“Ensuring that relevant development proposals incorporate access to facilities for people with disabilities such as level access to buildings, ditched kerbs, changing places, appropriate parking spaces and accessible toilet facilities”.*
- *“Promote participation, develop the capacity of marginalised communities and foster community leadership in areas of disadvantage and among communities of interest experiencing inequalities.”*

Section 10.6 of the Kildare Development Plan recognises the importance of social infrastructure in supporting and achieving balanced communities and friendly environment. According to Section 10.6 of the Development Plan:

“The provision of adequate and suitably located community, leisure and cultural facilities are critical infrastructure to support our towns and villages. These services significantly enhance the quality of life of the citizens of Kildare and enhances the attractiveness of Kildare as a place to visit. While Kildare has a wide range of community services and facilities, the county’s young and growing population is placing considerable pressure on these services in many areas. The Council will seek to ensure that an appropriate range of facilities are provided in all communities taking account of the population profile and growth targets identified in the Core Strategy.”

The Development Plan sets out an extensive list of social infrastructure policy objectives in ‘Chapter 10 – Community Infrastructure & Creative Places’ under the following headings:

- Community Services and Facilities;
- Social Inclusion, Spatial Justice and Community Development;
- Groups with Specific Design/ Planning Needs;
- Local Development/ Community Groups;
- Arts and Culture in the Community;
- Library Services;
- Educational Facilities;
- Childcare Facilities;
- Health Services;
- Fire Services; and
- Social, Community and Cultural Events.

The Development Plan also sets out an extensive list of policies and objectives that relate to social infrastructure in the following chapters:

- Chapter 11: Built and Cultural Heritage;
- Chapter 12: Biodiversity and Green Infrastructure;
- Chapter 13: Landscape, Recreation and Amenity; and
- Chapter 14: Urban Design, Placemaking and Regeneration.

3.3.2 Leixlip Local Area Plan 2020-2023

Section 7.4 of the LAP defines social infrastructure as:

“Social Infrastructure’ relates to the provision of services and facilities which are essential for health, well-being and the social development of a town. Social infrastructure facilities include for example, schools, health services, surgeries and community specific services, as well as areas which can offer active sports and passive recreational activities. In addition to the actual activity and function, ‘social infrastructure’ facilities can provide an invisible platform of community and social interaction which some residents may rely upon for personal well-being. The provision of the requisite levels of social infrastructure within Leixlip is therefore important and vital to support the needs of the existing and planned residential base.”

The LAP sets the following interlinked strategic policies and objectives relating to social infrastructure *inter alia*:

“Policy HC3 – Social Infrastructure – To facilitate and secure the provision of social infrastructure to support existing and new communities within the LAP area, in a manner which provides flexibility to respond to varied and changing community needs”.

“Policy HC4 – Community Facilities – To facilitate and support a broad range of community, cultural and recreational facilities to serve the needs of the residents of Leixlip”.

“S4 – To deliver new residential development within Leixlip to support existing community infrastructure, recreation and amenity facilities and provide new facilities in tandem with opportunities for significant new housing”.

As part of the LAP plan-making process a SIA was carried out to examine the availability and capacity of existing social infrastructure facilities in Leixlip, to determine future requirements and make recommendations based on anticipated settlement growth. The social infrastructure examined in the LAP SIA included the following: Education and Training; Childcare; Health; Social and Community; Arts and Culture; Faith; Outdoor Sports; and Equipped Play Spaces.

The LAP SIA identified a requirement for the provision of an ‘Equipped / Designated Play Spaces’ within the subject site (see **Figure 3.1**). In accordance with this requirement, the proposed development will provide for a playground, outdoor gym equipment and an informal playing field at the identified location. It is also highlighted to Louth CoCo that additional equipped play spaces will be provided throughout the subject site to facilitate the future residents of the development and surrounding area. (See accompanying Landscape Masterplan and Landscape Design Statement prepared by Isla Rutgers Landscape Architecture for more details.)

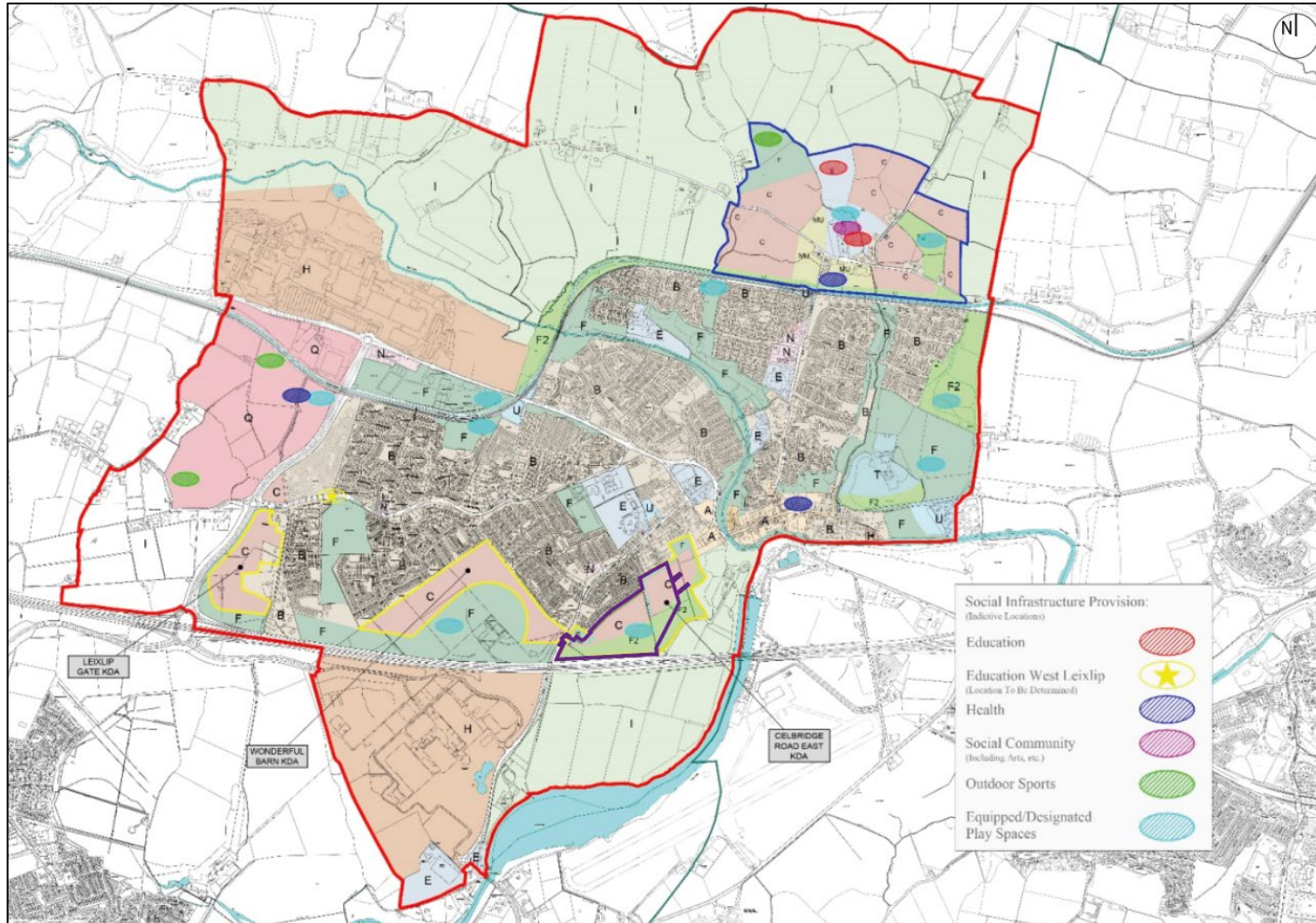


Figure 3.1: Leixlip Local Area Plan 2017 – 2023 Social Infrastructure Provisions – Indicative Locations

Source: Figure 7-1 of the Leixlip Local Area Plan 2017 – 2023; annotated by Turley - subject site outline in purple

Social Infrastructure Audit

Leixlip Demesne LRD - Lands located at Leixlip Demesne, Leixlip, Co. Kildare

3.4 Policy Conclusion

National, regional and local policy supports the development of, and investment in, social infrastructure that is appropriate to targeted and planned population, particularly in strategic locations such as the Self-Sustaining Growth Town of Leixlip.

In accordance with local policy specifically, it is highlighted that the proposed development will provide for a playground, outdoor gym equipment and an informal playing field at the location identified in the LAP. It is also highlighted that additional equipped play spaces and amenity areas will be provided throughout the subject site to facilitate the future residents of the development and surrounding area in accordance with national, regional and local policy.

4. Community Profile

The application site is located in the electoral division of Leixlip (ED ID 06 039) in County Kildare.

In summary, the population of Leixlip represented 7% of Kildare County's population in 2016 and 6.75% in 2022. The population of Leixlip represented 0.3% of the national population in both 2016 and 2022.

The Leixlip ED and the adjoining EDs have all experienced population growth since 2016, but at varying degrees. The Leixlip ED experienced a population growth of 7.1% since 2016 which is just behind the overall national growth figure of 7.6%.

The current population growth context is expected to continue for both County Kildare and Leixlip, particularly in the short term. Indeed, the National Planning Framework Roadmap (July 2018) and the Eastern and Midland Regional Assembly's Regional Spatial and Economic Strategy (RSES) 2019-2031 set a population target of 254,000 persons for Kildare by 2026.

'Table 2.8 – Core Strategy Table' of the Kildare County Development 2023-2029 contains a population target of 2,565 more people in Leixlip between 2023 and the end of Q4 in 2028 to help support Leixlip's designation as a 'Self-Sustaining Growth Town'.

With regard to age profile, Kildare County has a lower proportion of residents aged 65+ years (9.9%) when compared with the national average of 13.4% and a higher proportion of younger residents in each

of the 0-14 years, 15-24 years and 25-44 years cohorts when compared with the national average.

The largest age cohort of population in Leixlip is between 19-65 years (62%) and the primary and post primary children age group (4-18 years) represent c. 20% of Leixlip's population. Leixlip had a population of 1,927 aged 65+ years which represents slightly less proportion (12.26%) of elderly residents when compared with the national average (13.39%).

The average age of the Leixlip ED population was higher (37.2 years) than the average age for Kildare County (34.9 years) in 2016, and slightly below the national average (37.4 years).

The historical development of Leixlip was established by the confluence of the 'Royal Canal' and the River Rye. Today, the development pattern of Leixlip is influenced by wider regional socio-economic factors including its location within the Greater Dublin area, its proximity and accessibility to the capital city, and the aspirations of Kildare County Council to facilitate settlement growth in accordance with the Kildare County Development Plan 'Core Strategy'. This assessment is mindful, and has taken into consideration, that the community may utilise community infrastructure services which are located outside the study boundary. Therefore, the adjacent towns of Celbridge and Lucan have been taken into consideration in the preparation and completion of this SIA. The proximity between the three towns has helped us to shape an overview of the main facilities and services available in the study area.

5. Existing Social Infrastructure

For the purposes of this SIA, the following categories were used to identify the social infrastructure within the study area:

- Education and Training;
- Childcare;
- Health;
- Sports and Recreation;
- Social, Community and Commercial;
- Arts and Culture; and
- Faith.

As stated previously in **Section 2**, the study area for this SIA was determined by applying a 5km radius (as the crow flies), i.e., equivalent of c.10-15 minutes travel time by car, from the subject site's main entrance onto the Celbridge Road (R404) to ensure that the identified existing and proposed childcare facilities can be accessed via a number of transport options including *inter alia* walking, cycling, public transport and driving (see **Figure 2.1 – Figure 2.4**). A particular focus was also given to the settlement of Leixlip (as defined in Census 2016) in which the subject site is located.

The sections that follow identify and describe the existing social infrastructure within the study area. The location of each piece of social

infrastructure identified is detailed in the tables under each category and illustrated on the associated map using a corresponding number.

5.1 Education and Training

Facilities examined under this section of the SIA include primary schools, post-primary schools, and further education / training centres.

The information provided in the sections that follow has been obtained from the following sources:

Table 5.1: List of Education and Training Sources

Source	Link
Department of Education	www.gov.ie/en/service/find-a-school/
Tusla	www.tusla.ie/uploads/content/Westmeath_Sept21.pdf
Pobal	maps.pobal.ie/
Central Statistics Office	www.cso.ie
Google Search	www.google.ie

Figure 2.2 - Figure 2.4 illustrate the bus and cycle networks that operate within the local area. These networks will provide the future residents of the proposed development with access to the identified schools and training.

Overall, the assessment has identified a significant number of education and training facilities within the study area (and its surrounds), including:

- 30 no. Primary Schools
- 12 no. Post-primary Schools
- 10 no. Third-Level Educational Facilities

5.1.1 Primary Schools

According to the 2016 Census, the population of primary school going age children (5yr-12yr) in Leixlip was 1,754 no. children, representing 11.3% of the total population. This figure is slightly below the population of primary school going age in Celbridge, representing 13.6% of the population in 2016 (2,762 no. children).

A total of 30 no. primary schools were identified within the study area. The combined total capacity for the 30 no. identified schools is 11,713 no. spaces, with the identified school enrolment figures being at capacity in Q1 January 2023.

Figure 5.1 depicts the location of the primary schools identified within the study area, with **Tables 5.2 – Table 5.4** providing details on the identified primary schools, including the 2022 / 2023 capacity / enrolment figures.

Given the number of primary schools located within the study area, it is considered that the proposed development will be sufficiently serviced by this category.

Table 5.2: List of Primary Schools in Leixlip

No.	Name	Distance	Walk (min)	Cycle (Min)	Drive (Min)	Facility Type	Capacity / Enrolment ³
1	Leixlip Educate Together National School	2.4 km	25	7	4	Mixed	53
2	Scoil Eoin Phoil	1.3 km	15	5	3	Mixed	298
3	Scoil Bhride	1.4 km	16	5	3	Mixed	308
4	Scoil Mhuire	1.6 km	17	5	3	Mixed	281
5	Scoil Chearbhaill Uí Dhálaigh	1.0 km	12	3	2	Mixed	389
6	San Carlo Junior NS	2.7 km	26	10	6	Mixed	280
7	San Carlo Junior NS	2.7 km	26	10	6	Mixed	264
Total							1,873

Table 5.3: List of Primary Schools in Celbridge

No.	Name	Distance	Walk (min)	Cycle (Min)	Drive (Min)	Facility Type	Capacity / Enrolment ⁴
8	Aghards NS	5.7 km	61	17	10	Mixed	667
9	Scoil Na Mainistreach	5.4 km	60	17	10	Mixed	395
10	North Kildcare Educate Together NS	6.6 km	75	20	12	Mixed	413
11	Scoil Naomh Brid	4.4 km	47	14	8	Girls	293
12	Primrose Hill NS	4.3 km	50	15	7	Mixed	108

³ As of Q1 January 2023

13	Scoil Naomh Padraig	4.4 km	54	14	7	Mixed	393
Total							2,269

Table 5.4: List of Primary Schools in Lucan

No.	Name	Distance	Walk (min)	Cycle (Min)	Drive (Min)	Facility Type	Capacity / Enrolment ⁴
14	St Marys NS	5.9 km	56	18	9	Mixed	485
15	Lucan BNS	6.9 km	65	20	13	Boys	515
16	St Andrew NS	7.3 km	72	23	12	Mixed	386
17	Scoil Mhuire	6.9 km	68	22	11	Girls	562
18	Scoil Aine Naofa	5.4 km	68	19	10	Mixed	602
19	St Thomas Junior National School	5.4 km	68	19	10	Mixed	548
20	Gaelscoil Naomh Padraig	7.5 km	99	25	14	Mixed	429
21	Gaelscoil Eiscir Riada	6.8 km	78	26	13	Mixed	448
22	Lucan Educate Together NS	8.3 km	98	28	13	Mixed	423
23	Griffen Valley Educate Together NS	7.8 km	102	25	13	Mixed	504
24	Lucan East ETNS	8.1 km	103	28	14	Mixed	428
25	Lucan Community National School	8.7 km	112	30	16	Mixed	312
26	Divine Mercy Senior National School	9.6 km	115	30	14	Mixed	390
27	Divine Mercy Junior National School	9.6 km	115	30	14	Mixed	258
28	Esker Educate Together NS	6.8 km	76	20	11	Mixed	410

Social Infrastructure Audit

29	Adamstown Castle Educate Together NS	6.8 km	76	20	11	Mixed	444
30	St John the Evangelist NS	6.8 km	76	20	11	Mixed	427
Total							7,571



Figure 5.1: Location of Primary Schools within the Study Area (indicative subject site indicated in red)

Source: Open Street Map – Annotated by Turley

Social Infrastructure Audit

Leixlip Demesne LRD - Lands located at Leixlip Demesne, Leixlip, Co. Kildare

5.1.2 Post-Primary Schools

According to the 2016 Census, the population of post-primary school going age children (13yr-18yr) in Leixlip was 1,141 no. children, representing 7.4% of the total population. This figure is slightly below the population of post-primary going age in Celbridge, representing 8.8% of the population in 2016 (1,789 no. children).

A total of 12 no. post-primary schools were identified within the study area. The combined total capacity for the 12 no. identified schools is 8,919 no. spaces, with the identified school enrolment figures being at capacity in Q1 January 2023.

Figure 5.2 depicts the location of the primary schools identified within the study area, with **Tables 5.5 – Table 5.7** providing details on the identified primary schools, including the 2022 / 2023 capacity / enrolment.

Given the number of post-primary schools located within the study area, it is considered that the proposed development will be sufficiently serviced by this category.

Table 5.5: List of Post-Primary Schools in Leixlip

No.	Name	Distance	Walk (min)	Cycle (Min)	Drive (Min)	Facility Type	Capacity / Enrolment ⁴
1	Leixlip Community School	850 m	11	3	2	Mixed	591
2	Confey Community College	4.3 km	40	19	9	Mixed	845
Total							1,436

Table 5.6: List of Post-Primary Schools in Celbridge

No.	Name	Distance	Walk (min)	Cycle (Min)	Drive (Min)	Facility Type	Capacity / Enrolment ⁵
3	St Wolstan's Community School	6.2 km	70	19	10	Girls	740
4	Celbridge Community School	4.4 km	54	15	8	Mixed	710
5	Salesian College	4.8 km	58	16	8	Boys	753
Total							2,203

Table 5.7: List of Post-Primary Schools in West-Lucan

No.	Name	Distance	Walk (min)	Cycle (Min)	Drive (Min)	Facility Type	Capacity / Enrolment ⁵
6	St Joseph's College	6.9 km	67	22	11	Girls	904
7	Coláiste Phádraig CBS	7.8 km	78	25	14	Boys	582
8	Coláiste Cois Life	8.4 km	81	23	15	Mixed	715

⁴ As of Q1 January 2023

9	Lucan Community College	5.5 km	69	19	10	Mixed	926
10	Adamstown Community College	6.6 km	74	19	11	Mixed	953
11	Griffeen Community College	12 km	101	27	17	Mixed	286
12	Kishoge Community College	12 km	101	27	17	Mixed	914
Total							5,280

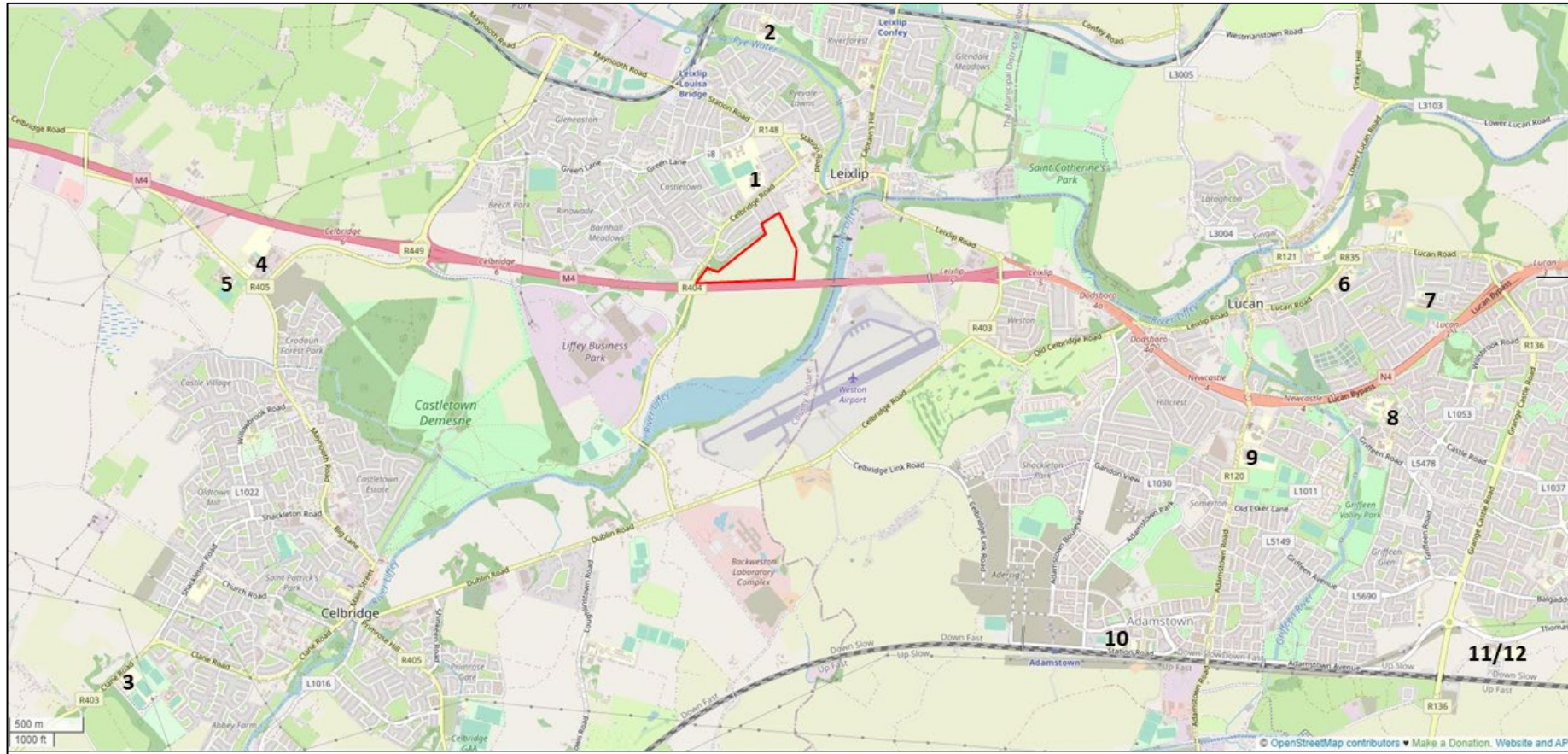


Figure 5.2: Location of Post-primary Schools within the Study Area (indicative subject site indicated in red)

Source: Open Street Map – Annotated by Turley

Social Infrastructure Audit

Leixlip Demesne LRD - Lands located at Leixlip Demesne, Leixlip, Co. Kildare

5.1.3 Third-Level and Further Education

A total of 4 no. third-level education facilities were identified within the study area, including:

1. Leixlip Community School (Colaiste Chiaran): A progressive and modern school for student of different ages. Various education and training programmes are offered by the school such as cookery and nutrition, language, business, music, and dance and so on.
2. Orla Gildea School of Speech and Drama: A theatre school with special classes focusing on all aspects of Speech and Drama studies.
3. Youthreach: An education, training, and work programme for early school leavers aged 15-20 years old. It offers support to young people to help them identify what they would like to do in adult life.
4. Celbridge FETC: This centre offers educational training and youth services at different level. Courses are available from hobby and elementary to degree and professional qualification level.

Acknowledging the location of Leixlip within the Dublin Metropolitan Area, it is also highlighted that the subject site will benefit from its proximity to Dublin City's third-level education facilities including those listed in **Table 5.8**.

Maynooth University in Co. Kildare has also been identified due to its proximity to the subject site.

Given the wide variety and prestige of the third-level education facilities located within or close to the study area, it is considered

that the proposed development will be sufficiently serviced by this category.

Table 5.8: List of Third-Level Educational Facilities

No.	Name of University	Distance in km	Travelling Time by Car (min)
1.	Leixlip Community School (Colaiste Chiaran)	0.9	2
2.	Orla Gildea School of Speech and Drama	1	2
3.	Youthreach	2.6	7
4.	Celbridge FETC	4.5	8
5.	Maynooth University	9.2	18
6.	Technological University Dublin (TU Dublin)	18.2	27
7.	Dublin Business School	19.1	33
8.	Trinity College Dublin	21.2	43
9.	Dublin City University (DCU)	23.6	29
10.	University College Dublin (UCD)	31.9	35

5.2 Childcare Facilities

The childcare facilities identified in this SIA include crèche, Montessori, pre-school, and after-school services on a full, part-time and sessional basis.

To assess the childcare facilities in the area, the data has been grouped and populated into 3 no. tables; a table for Leixlip, Celbridge and Lucan respectively (see **Table 5.9 – Table 5.11**).

Tables 5.9 – Table 5.11 provide details on the travel time between the subject site and the various childcare facilities identified within Leixlip, Celbridge and Lucan. These tables also list the Summer 2022 capacity, 2022 / 2023 capacity and enrolment figures for each childcare facility identified; with **Table 5.12** providing a summary of these figures.

Figure 5.3 illustrates the location of the subject site and the location of each of the childcare facilities identified within **Tables 5.9 – Table 5.11**.

A total of 56 no. childcare facilities were identified within the study area:

- 11 no. in Leixlip
- 16 no. in Celbridge
- 29 no. in Lucan.

The combined total enrolment percentage for the 56 no. identified childcare facilities was 96% in Q1 2023.

It is evident from the enrolment figures that the existing childcare facilities are at or near capacity. Therefore, any new residential development within the study area should provide provision for a childcare facility to facilitate the future residents of the proposed development⁵

⁵ Please refer to the Childcare Demand Report which accompanies this LRD application, which was prepared by Turley, for more information on the existing, permitted and

proposed childcare facilities within the study area and the anticipated demand for childcare within the proposed residential development.

Table 5.9: Childcare Facilities in Leixlip – Travel Time from Subject Site and Capacity / Enrolment Summer 2022 and Capacity / Enrolment Academic Year 2022-2023

No.	Name	Distance	Travel Time			Capacity	Q3 2022		Q1 2023		
			Walk (Min)	Cycle (Min)	Drive (Min)		Available Places	Enrolment %	Capacity	Available Places	Enrolment %
1	Greenlane Montessori	1.2km	14	4	3	30	0	100%	30	0	100%
2	Little Harvard GL	1.3km	16	4	2	175	90 ⁶	49%	---	---	---
3	Shining Stars	1.3km	15	4	3	12* (sessional)	--	--	70	0	100%
4	Little Harvard Creche & Montessori CH	1.4km	18	4	2	15* (sessional)	--	--	15* (sessional)	---	---
5	Ryevale Montessori	1.6km	17	5	4	30	0	100%	30	0	100%
6	Kids Inc	2km	24	7	4	--	--	--	---	---	---
7	Little Graduate Pre-School	2.3km	27	7	5	9* (sessional)	--	--	9* (sessional)	---	---
8	Little Harvard Creche & Montessori BP	2.3km	27	7	5	125	0	100%	125	0	100%
9	Picme Pre-School	2.4km	24	7	5	15	0	100%	---	---	---
10	Confey Montessori	2.7km	26	10	6	58* (sessional)	--	--	88	0	100%
11	Tiny Tots	2.7km	26	10	7	44	2	95.5%	---	---	---
Total						513	92	92%	367	0	100%

⁶ The available 90 no. places reflects sessional time.

Social Infrastructure Audit

Table 5.10: Childcare Facilities in Celbridge – Travel Time from Subject Site and Capacity / Enrolment Summer 2022 and Capacity / Enrolment Academic Year 2022-2023

No.	Name	Distance	Travel Time			Capacity	Q3 2022		Q1 2023		
			Walk (Min)	Cycle (Min)	Drive (Min)		Available Places	Enrolment %	Capacity	Available Places	Enrolment %
1	Chatterboxes	2.9km	35	9	5	45	0	100%	46	0	100%
2	Jane's Tree Top Montessori	3.1km	38	10	5	16 (morning) 16 (afternoon)	0 (morning) 10 (afternoon)	69%	16 (morning) 16 (afternoon)	0 (morning) 10 (afternoon)	69%
3	Shooting Stars	3.8km	46	12	6	35	0	100%	35	0	100%
4	The Kindergarten	4.1km	49	13	7	20*	--	--	20	0	100%
5	Brilliant Beginnings	4.1km	50	13	7	39	0	100%	39	0	100%
6	Giraffe Childcare	4.4km	54	15	8	172	0	100%	140	0	100%
7	Cocoon Childcare	4.7km	56	15	8	66	12	82%	---	---	---
8	Memory Lane	4.9km	47	12	10	40	10	75%	40	0	100%
9	The Children's Circle	5.2km	61	17	13	22	0	100%	---	---	---
10	Kiddies Choice	5.3km	43	12	11	70	0	100%	---	---	---
11	Celbridge Montessori	5.3km	41	10	11	22	0	100%	---	---	---
12	Choice Childcare Celbridge	5.7km	60	17	12	60*	--	--	60	0	100%
13	Vivienne's Playschool	6km	61	16	12	10	0	100%	---	---	---
14	Happy Years	6.5km	60	17	13	100	30	70%	---	---	---

Social Infrastructure Audit

15	The Purple Penguin	6.7km	63	18	13	70*	--	--	70	0	100%
16	Hopscotch	7.2km	75	20	14	53	0	100%	53	0	100%
Total						724	52	93%	535	10	97%

Table 5.11: Childcare Facilities in Lucan – Travel Time from Subject Site and Capacity / Enrolment Summer 2022 and Capacity / Enrolment Academic Year 2022-2023

No.	Name	Travel Time				Capacity	Q3 2022		Q1 2023		
		Distance	Walk (Min)	Cycle (Min)	Drive (Min)		Available Places	Enrolment %	Capacity	Available Places	Enrolment %
1	Lucan Child Nursery & Montessori	6km	57	19	10	37	0	100%	41	0	100%
2	The Old Schoolhouse Montessori School	6km	45	18	9	33* (sessional)	--	--	33* (sessional)	---	---
3	The Wombles Pre-School	6.2km	56	20	10	40* (sessional)	--	--	40* (sessional)	---	---
4	The Hub	6.3km	59	19	9	--	--	--	---	---	---
5	Kidstart Pre-School	6.3km	76	22	11	30	0	100%	30	0	100%
6	Smallworld	6.4km	58	18	10	31* (sessional)	--	--	100	0	100%
7	Naoinri Hanbury Lane	6.4km	60	19	10	9* (sessional)	--	--	9* (sessional)	---	---
8	Co-operative Childcare St Finian's	6.4km	74	20	11	68	2	97%	---	---	---

Social Infrastructure Audit

9	Naionra Eiscir	6.4km	76	21	12	27* (sessional)	--	--	27* (sessional)	---	---
10	Mindful Play Childcare (childminder)	6.5km	61	20	10	5	5	0%	---	---	---
11	Learning for Life	6.5km	62	20	10	60	0	100%	---	---	---
12	Explore Together Childcare Centre	6.6km	71	23	13	41	0	100%	---	---	---
13	Finnstown Childcare	6.6km	80	22	12	36* (full day)	--	--	36* (full day)	---	---
14	Rainbows End	6.6km	73	24	11	18* (sessional)	--	--	18* (sessional)	---	---
15	Montessori Matters	6.6km	76	22	12	46* (full day)	--	--	46* (full day)	---	---
16	Naíonra Mháirín	6.8km	78	21	12	44	8	82%	---	---	---
17	Busy Kids Lucan	6.8km	82	23	11	79* (full day)	--	--	79* (full day)	---	---
18	Sherpa Kids St. Mary's	6.9km	64	19	10	--	--	--	60	12	80%
19	Montessori on the Green	7km	58	20	13	--	--	--	---	---	---
20	Sherpa Kids Scoil Mhuire GNS	7.1km	69	22	11	<200	0	100%	36	12	67%
21	Sarah's Little Sunflowers Pre-school	7.1km	84	24	13	16* (sessional)	--	--	16* (sessional)	---	---

Social Infrastructure Audit

Leixlip Demesne LRD - Lands located at Leixlip Demesne, Leixlip, Co. Kildare

22	Village Montessori	7.2km	69	22	11	68* (sessional)	--	--	88	0	100%
23	Griffeen Valley Childcare	7.3km	85	24	12	--	--	--	---	---	---
24	Naíonra Matters	7.5km	89	25	13	--	--	--	20 (morning) 20 (afternoon)	10	75%
25	Sherpa kids Griffeen Valley Educate	7.7km	91	25	13	--	--	--	24	0	100%
26	Giraffe Childcare – Griffeen	7.7km	92	25	13	84	0	100%	---	---	---
27	Giraffe Childcare – Adamstown	7.8km	81	26	15	62	0	100%	---	---	---
28	Precious Minds Creche & Montessori School	7.8km	87	24	13	42	0	100%	40	0	100%
29	Sherpa Kids Lucan East ET	7.9km	93	26	14	--	--	--	36	0	100%
Total						673	15	89%	867	34	92%

Notes:

- Bold emphasis: Information provided by the childcare facility proprietors via phone or e-mail.
- * Information from Tusla Reports as the Service Provider was unobtainable.
- -- Information unknown: Attempts made to contact the childcare facility proprietor by phone on 07 and 11 July 2022, and by email on 08 July 2022.
- --- Information unknown: Attempts made to contact the childcare facility proprietor by phone on 09 February 2023.

Social Infrastructure Audit

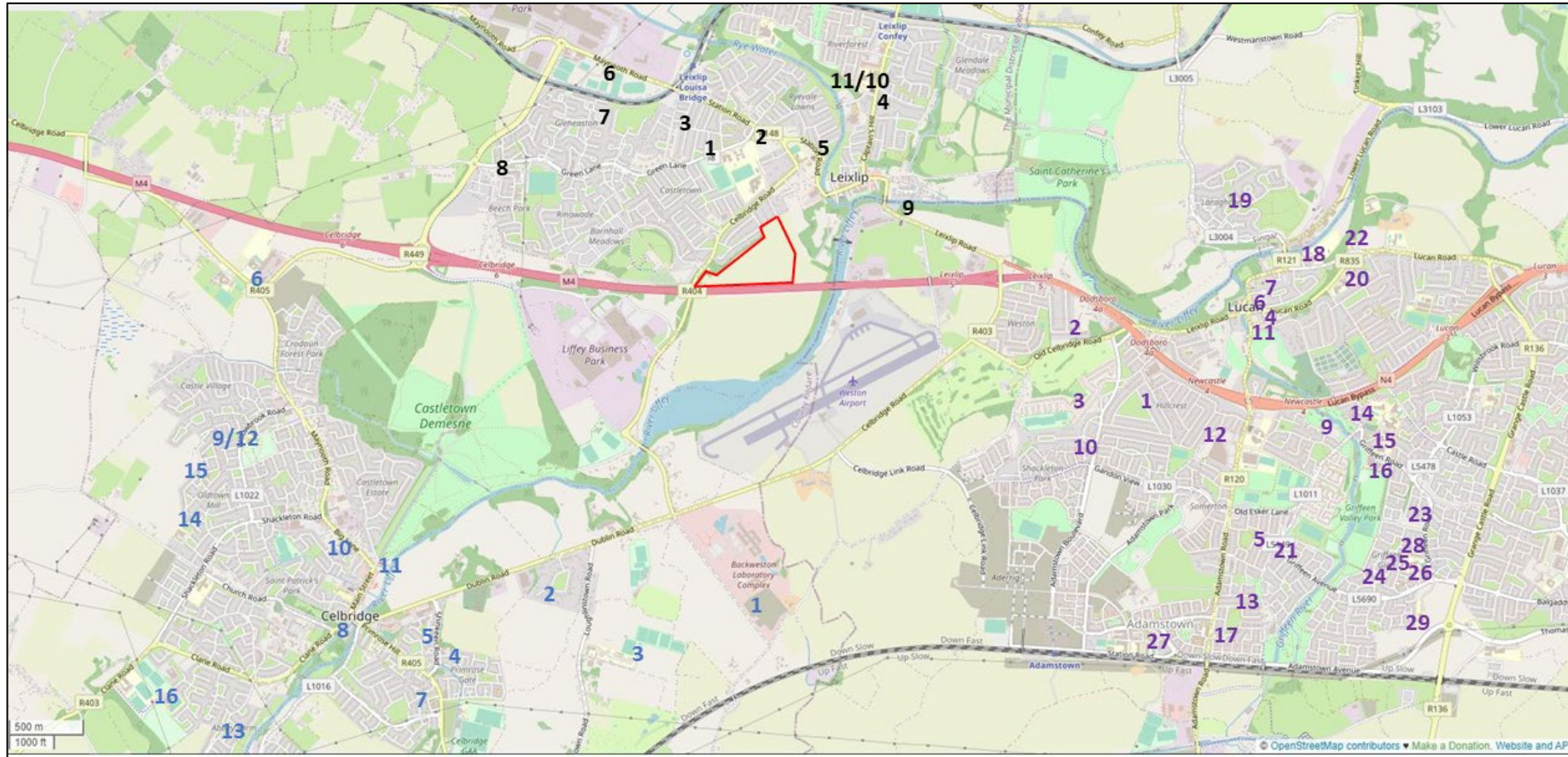


Figure 5.3: Location of the Childcare Facilities in Leixlip, Celbridge and Lucan (indicative subject site outlined in red; Leixlip childcare facilities identified in black; Celbridge childcare facilities identified in blue; and Lucan childcare facilities identified in purple)

Source: Open Street Map and pobal.ie – annotated by Turley

Social Infrastructure Audit

Leixlip Demesne LRD - Lands located at Leixlip Demesne, Leixlip, Co. Kildare

Table 5.12: Key Findings from Childcare Facilities Audit

Town	Number of Existing Facilities	Places Available*		Enrolment %		Degree of certainty**	
		Q3 2022	Q1 2023	Q3 2022	Q1 2023	Q3 2022	Q1 2023
Leixlip	11	92	0	92%	100%	55%	45%
Celbridge	16	52	10	93%	97%	81%	63%
Lucan	29	15	34	89%	92%	38%	34%
Total	56	159	44	91%	96%	58%	47%

Notes:

- * Based on Childcare Facilities that responded in Q3 2022 and Q1 2023
- ** Calculation: (number of facilities that provided information via phone or email; or information from Tusla Report / number of existing facilities) x 100

5.3 Health

5.3.1 Medical Centres and Practices

According to Census 2016, c.90% of the population of Leixlip consider themselves to be in good or very good health, while c.6.7% consider themselves to be in fair and c.1.3% consider themselves to be in bad or very bad health. The remainder did not state the condition of their health.

A total of 43 no. medical centres and practices were identified within the Study area, 13 no. of which are located in Leixlip (see **Table 5.13 – Table 5.15** and **Figure 5.4**). The identified medical centres and practices consist of:

- 21 no. Medical Centres;
- 8 no. Dentists;
- 6 no. Nursing Homes;
- 4 no. Opticians;
- 3 no. Health Centres; and
- 1 no. Orthodontist.

Given the wide variety and number of medical centres and practices located within the study area, it is considered that the proposed development will be sufficiently serviced by this category.

Table 5.13: List of Medical Centres and Practices in Leixlip

No.	Name	Address	Type of Facility	Distance in km	Travelling Time by Car (min)
1	Dr. Denise Nolan and Dr. Mary E Archer	River Forest Shopping Centre, Leixlip	Medical Centre	3.1	7
2	Dr. Mary Boyd	Rye Bridge, Leixlip	Medical Centre	1.8	4
3	Dr. Mary Crowley and Dr. Ger Hayes	74 Newton Park, Leixlip	Medical Centre	2.8	6
4	Dr. Micheal A Fay	276 River Forest, Leixlip	Medical Centre	3.1	6
5	Dr. Michael Hanlon, Dr. Laura Noone, Dr. Helen Smith, Dr. David Hanlon, Dr. Fergal Hanlon	Glen Easton, Leixlip	Medical Centre	2.4	5
6	Dr. Muiris De Bhulbh	Kelly Medical Centre, 39 Celbridge Road, Leixlip	Medical Centre	0.5	1
7	Health Centre	Main Street, Leixlip	Health Centre	2	4
8	Dental Practice	4 The Mall, Main Street, Leixlip	Dental Practice	2	4
9	Dental Surgery	51 Oaklawm, Leixlip	Dental Practice	1.2	3
10	Dental Care – Riverforest	Riverforest Shopping Centre, Leixlip	Dental Practice	2.9	6
11	Ryevale Nursing Home	Ryevale Mill, Leixlip	Nursing Home	2.9	7
12	Mullins & Henry	St Catherine’s Park, Leixlip	Optician	2.8	6
13	Barry Lawler Opticians	Main Street, Leixlip	Optician	1.9	4

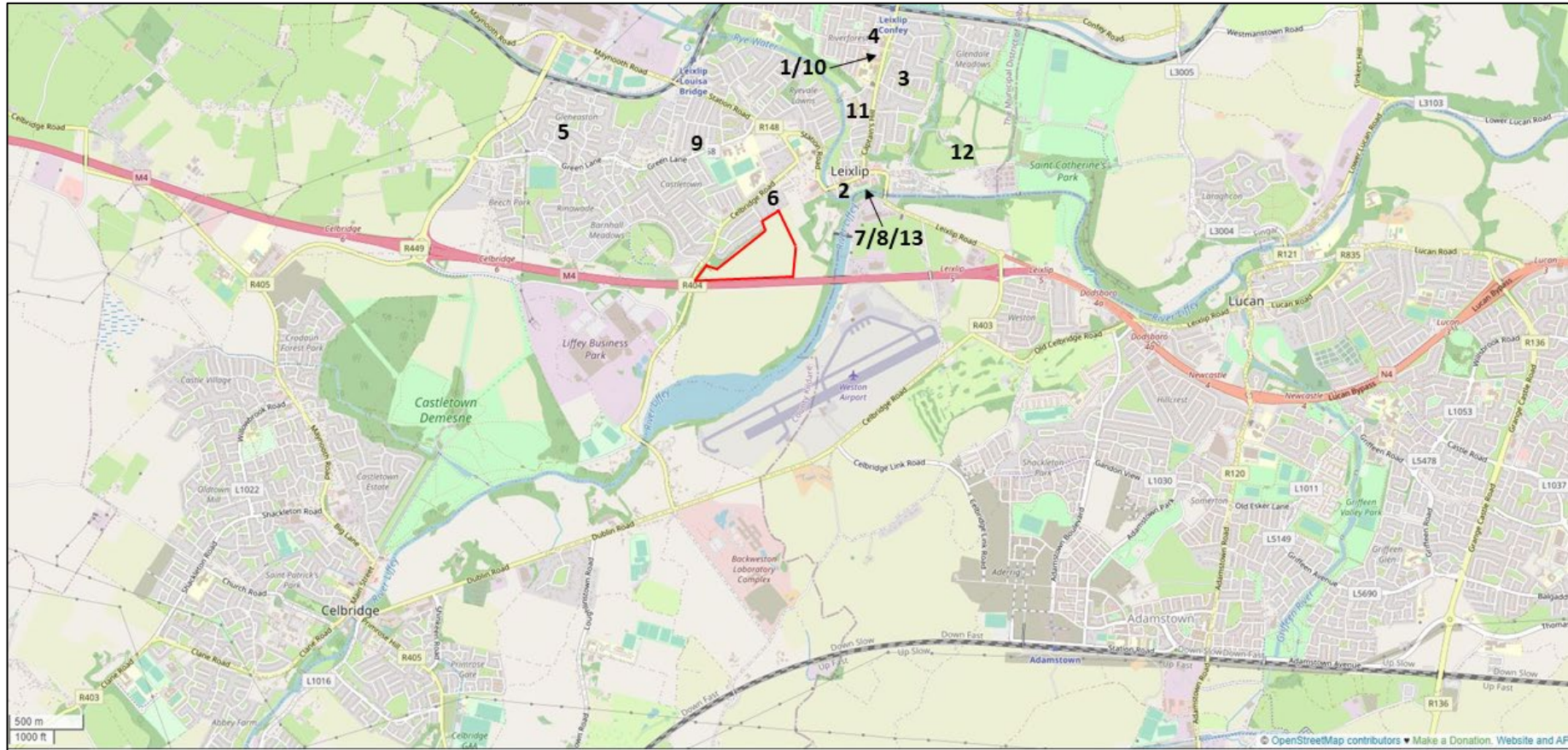


Figure 5.4: Medical Practices in Leixlip (indicative subject site indicated in red)

Source: Open Street Map and pobal.ie – annotated by Turley

Social Infrastructure Audit

Leixlip Demesne LRD - Lands located at Leixlip Demesne, Leixlip, Co. Kildare

Table 5.14: List of Medical Centres and Practices in Celbridge

No.	Name	Address	Type of Facility	Distance in km	Travelling Time by Car (min)
1	Dr. Fiona O'Connor and Dr. Sinead O'Connor	Oaktree Clinic, Croghan House, Shackleton Road, Celbridge	Medical Centre	5.2	10
2	Dr. Gerard Waters	Whitethorn Clinic, Maynooth Road, Celbridge	Medical Centre	5	10
3	Dr. Peter Moran	Main Street, Celbridge	Medical Centre	4.2	8
4	Dr. Sean O'Brien and Dr. Sybille O'Brien	Larkfield Surgery, Larkfield Mews, Celbridge	Medical Centre	4.7	9
5	Dr. Sheila Dobell	Medical Centre, Main Street, Celbridge	Medical Centre	4.2	8
6	Dr. Thomas V Walsh	Medical Centre, Main Street, Celbridge	Medical Centre	4.2	8
7	HSE Celbridge Primary Care Centre	Maynooth Road, Celbridge	Health Centre	5.2	10
8	Riverside Dental Practice	Maynooth Road, Celbridge	Dental Practice	5.2	10
9	Glenashling Nursing Home	Oldtown, Celbridge	Nursing Home	5.5	10
10	Elm Hall Nursing Home	Loughlinstown Road, Ballyoulster, Celbridge	Nursing Home	3.1	5
11	Dara Residential Services Limited	Jasmine House, Main Street, Celbridge	Nursing Home	4.5	8
12	Miriam Porter Opticians	Main St, Donaghcumper, Celbridge	Optician	4.3	8

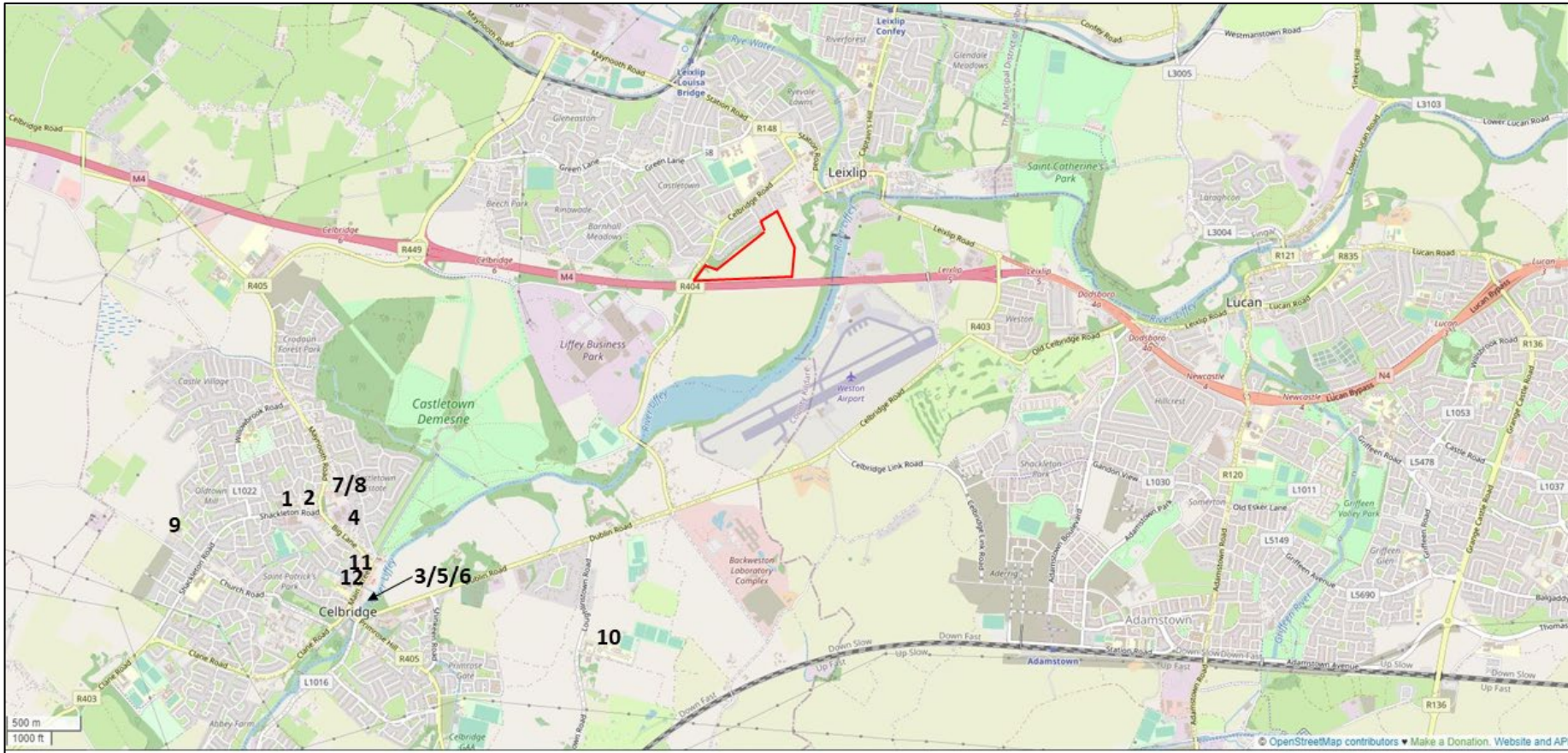


Figure 5.5: Medical Practices in Celbridge (indicative subject site indicated in red)

Source: Open Street Map and pobal.ie – annotated by Turley

Social Infrastructure Audit

Leixlip Demesne LRD - Lands located at Leixlip Demesne, Leixlip, Co. Kildare

Table 5.15: List of Medical Centres and Practices in Lucan

No.	Name	Address	Type of Facility	Distance in km	Travelling Time by Car (min)
1	Ballyowen Surgery	11 Ballyowen Rd, Ballyowen, Lucan	Medical Centre	7.6	10
2	Ballyowen Medical, Centric Health	Ballyowen Ln, Ballyowen, Lucan, Co. Dublin	Medical Centre	8.6	13
3	Primacare/ Griffeen Medical Centre	The Griffeen Centre, Unit 2, Griffeen Rd, Lucan	Medical Centre	7.8	13
4	Chapel Hill Medical Centre	5 Chapel Hill, St. Edmondsbury, Lucan	Medical Centre	6.7	10
5	The Medical Centre	Unit 20 Lucan Shopping Centre, Lucan	Medical Centre	5.8	10
6	Finnstown Medical Centre	Newcastle Rd, Finnstown, Lucan	Medical Centre	6.2	10
7	Dodsboro Clinic	Woodview Court, Woodview, Lucan	Medical Centre	5.7	8
8	Esker Lawns Medical Centre	49a Esker Lawns, Esker North, Lucan	Medical Centre	6.8	10
9	Main Street Clinic	7 Lower Main St, Lucan	Medical Centre	6.1	9
10	Lucan Health Centre	1A Sarsfield Park, Esker North, Lucan	Health Centre	7.1	11
11	Lucan Dental Care	2, Finnstown Centre, Newcastle Rd, Lucan, Co. Dublin	Dental Practice	6.2	10
12	Lucan Dental Practice	12 Dodsborough Rd, Lucan	Dental Practice	5.6	7
13	Central Dental Clinic Lucan	Carlaimar, Lucan Rd, Lucan, Lucan Village	Dental Practice	6	8
14	Dr Tony McKeon	Dental Practice, 5 Main St, Esker North, Lucan	Dental Practice	6.5	10

15	Lucan Orthodontics	189A Beech Park, Esker North, Lucan	Orthodontics	7.8	12
16	Griffen Valley Nursing Home	Esker Rd, Glebe, Lucan	Nursing Home	6.4	11
17	Lucan Lodge Nursing Home	Ardeevin Dr, Lucan	Nursing Home	5.8	9
18	Mullins and Henry	Unit 24, Lucan Shopping Centre, Newcastle Rd, Lucan	Optician	5.8	10



Figure 5.6: Medical Practices in Lucan (indicative subject site indicated in red)

Source: Open Street Map and pobal.ie – annotated by Turley

Social Infrastructure Audit

Leixlip Demesne LRD - Lands located at Leixlip Demesne, Leixlip, Co. Kildare

5.3.2 Pharmacies

A total of 17 no. pharmacies were identified within the Study Area, with 5 no. being located within Leixlip (see **Table 5.16 – Figure 5.7** and **Figure 5.7**).

Given the number of pharmacies located within the study area, it is considered that the proposed development will be sufficiently serviced by this category.

Table 5.16: List of Pharmacies

No.	Name	Address	Type of Facility	Distance in km	Travelling Time by Car (min)
1	Gaffneys Allcare Pharmacy	46 Main Street, Leixlip	Pharmacy	2	4
2	Smith's Pharmacy Leixlip	Riverforest Shopping Centre, Leixlip	Pharmacy	3.1	7
3	Griffin's Pharmacy	Glen Easton Shopping Centre, Leixlip	Pharmacy	1.3	3
4	The Rye Pharmacy	Barnhall Shopping Centre, Leixlip	Pharmacy	0.5	1
5	Feerick's Pharmacy	Captain's Hill, Leixlip	Pharmacy	3.1	7
6	Mangan's CarePlus Pharmacy	Maynooth Road, Celbridge	Pharmacy	5.2	11
7	Chemco Pharmacy Celbridge	Dublin Road, Celbridge	Pharmacy	3.7	7
8	Blake's Allcare Pharmacy	Main Street, Celbridge	Pharmacy	4.3	8
9	Walsh's Pharmacy	Tesco Shopping Centre, Celbridge	Pharmacy	5.1	10

10	Castletown Pharmacy	4 Main Street. Donaghcumper, Celbridge	Pharmacy	4.4	8
11	Kinsella's Pharmacy	Willow Court, Primote Gate, Celbridge	Pharmacy	3.9	7
12	McCabe's Pharmacy	The Griffeen Centre, Unit 1 & 2, Griffeen Rd, Lucan	Pharmacy	7.8	14
13	Finnstown Pharmacy	Unit 4 Finnstown Centre, Lucan	Pharmacy	6.2	11
14	LloydsPharmacy	Unit 4-5, Lucan Shopping Centre, Newcastle Rd, Lucan	Pharmacy	5.7	10
15	Adrian Dunne Pharmacy	Tesco Shopping Centre, Unit 4, Hillcrest Dr, Lucan	Pharmacy	5.7	8
16	Lucan Village Pharmacy	4 Main St, Lucan	Pharmacy	6.5	11
17	Kinirons Allcare Pharmacy	Main St, Esker North, Lucan	Pharmacy	6.5	11

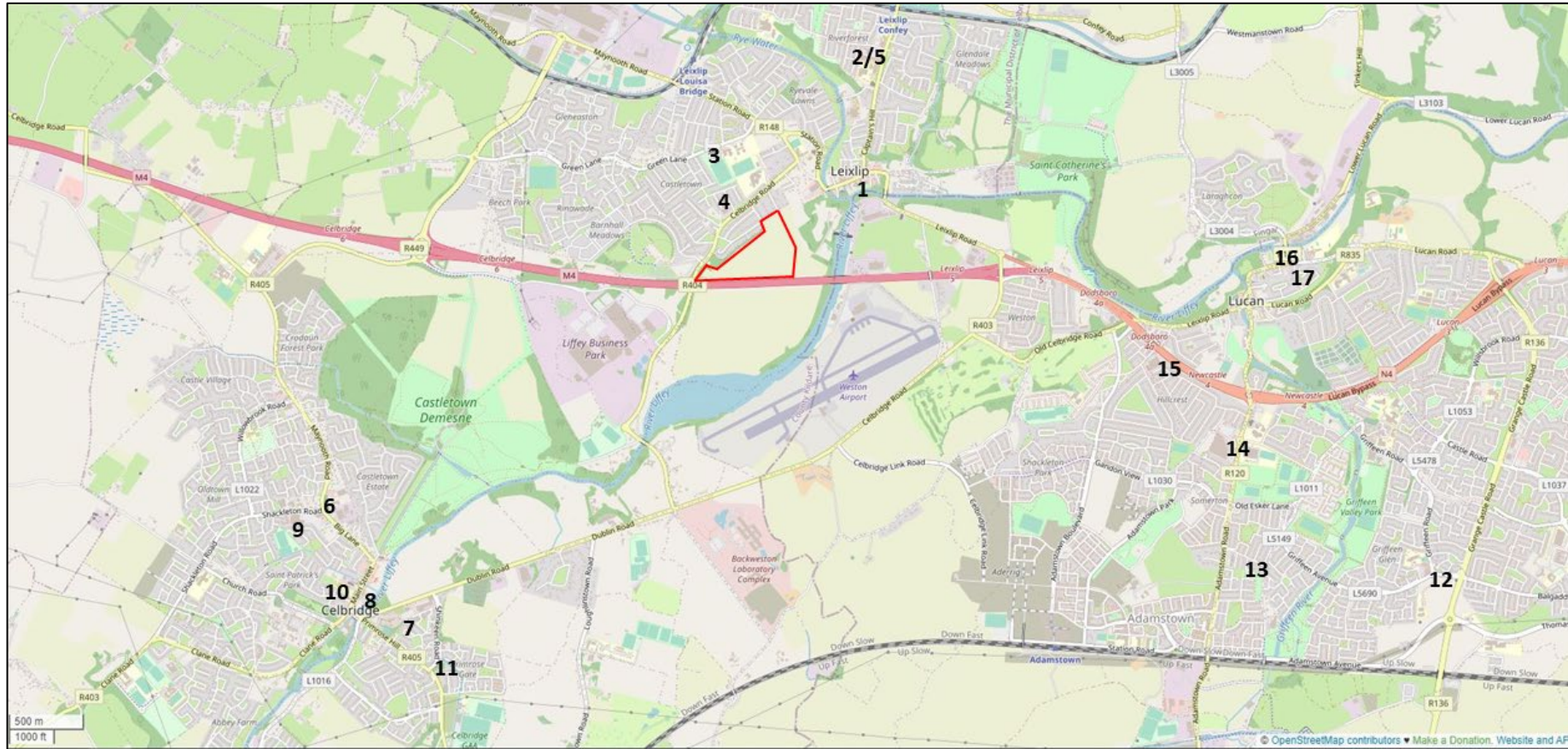


Figure 5.7: Pharmacies in Leixlip, Celbridge and Lucan (indicative subject site indicated in red)

Source: Open Street Map and pobal.ie – annotated by Turley

Social Infrastructure Audit

Leixlip Demesne LRD - Lands located at Leixlip Demesne, Leixlip, Co. Kildare

5.4 Sports and Recreation

5.4.1 Sports Facilities and Amenities

Sports facilities and amenities provide a community with an opportunity to socialise, compete, keep fit, and stay healthy.

A total of 30 no. sports facilities and amenities were identified within the Study area, 11 no. of which are within Leixlip (see **Table 5.17 – Table 5.19** and **Figure 5.8 – Figure 5.10**).

The identified sports facilities and amenities consist of:

- 10 no. Gyms;
- 5 no. Soccer Clubs;
- 4 no. Sports Centres / Complex;
- 3 no. GAA Clubs;
- 2 no. Tennis Clubs;
- 2 no. Community Centre;
- 2 no. Athletic Clubs;
- 1 no. Badminton Club;
- 1 no. Hockey Club.

The locations of the sports facilities and amenities are dispersed throughout the study area, with the pitch sports being primarily located at schools and sports centres.

Given the wide variety and number of sports facilities and amenities located within the study area, it is considered that the proposed development will be sufficiently serviced by this category.

Table 5.17: List of Sports Facilities and Amenities in Leixlip

No.	Name	Address	Type of Facility	Distance in km	Travelling Time by Car (min)
1	Leixlip Amenities Sports Centre	Collinstown, Leixlip, Co. Kildare	Sports Centre	2.4	4
2	Simple Strength Leixlip	Youth and Community Center, Newtown, Leixlip, Co. Kildare	Gym	0.7	1
3	CrossFit Leixlip	Mill Ln, St. Catherine's Park, Leixlip, Co. Kildare	Gym	2.6	6
4	Healthy Workforce	NUIM Barnhall RFC, Barnhall Rd, Parsonstown, Leixlip, Co. Kildare	Gym	1.4	2
5	EXCAPE Leixlip	Confey GAA Club, Allenswood, Leixlip, Co. Kildare	Gym	3.7	8
6	Confey Football Club	120 Glendale Meadows, Allenswood, Leixlip, Co. Kildare	Soccer Club	3.7	8
7	Croí Laighean Developmental Centre Leixlip All Weather Pitch	Glen Easton Cres, Easton, Leixlip, Co. Kildare	Soccer Club	2	4
8	Leixlip United	Collinstown, Leixlip, Co. Kildare	Soccer Club	2.4	4
9	Leixlip Youth and Community Centre	Newtown House, Captain's Hill, Newtown, Leixlip, Co. Kildare	Community Centre	3	6
10	Leixlip Tennis Club	R148, Collinstown, Leixlip, Co. Kildare	Tennis Club	2.4	4
11	Confey GAA Club	Confey, Leixlip, Co. Kildare	GAA Club	3.7	8

Social Infrastructure Audit

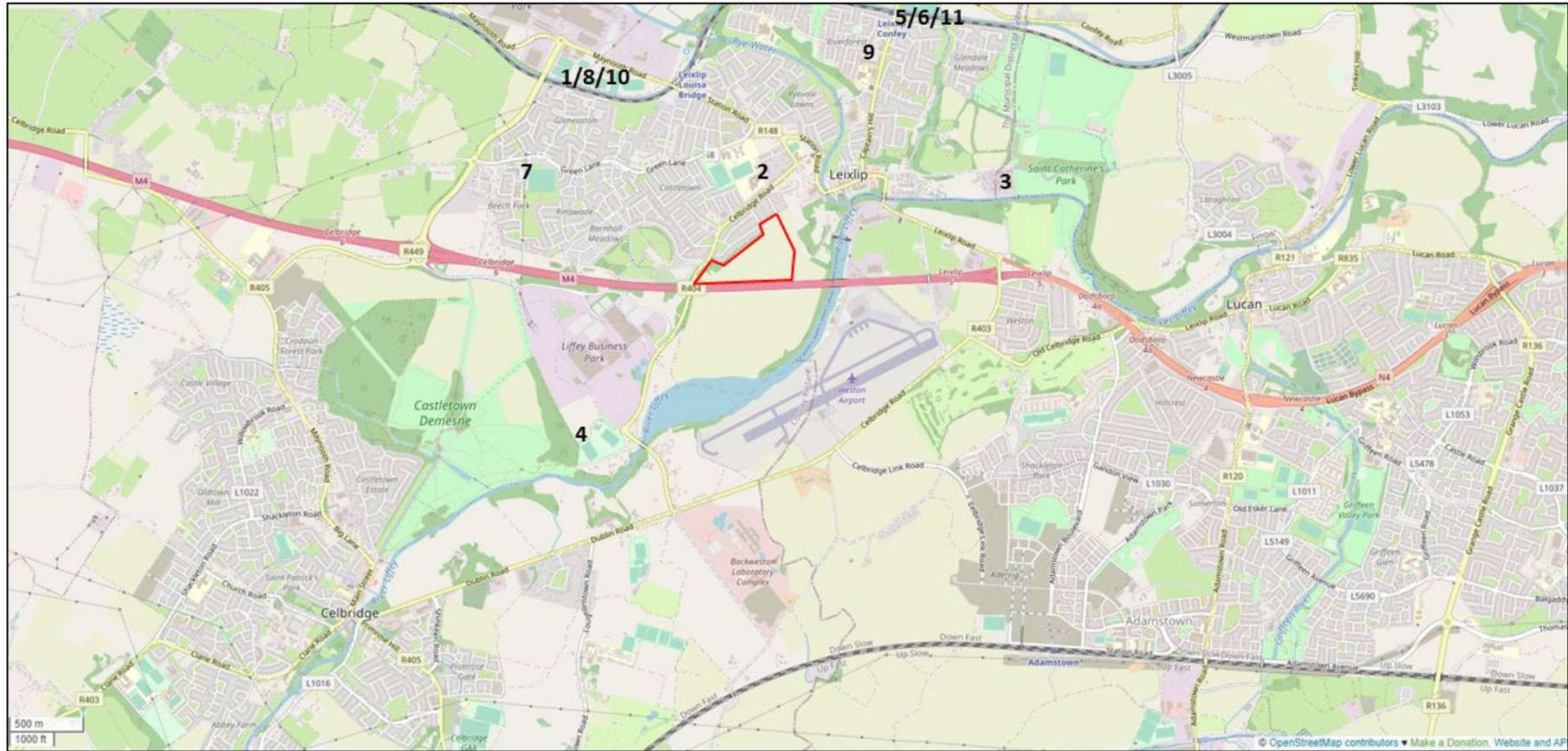


Figure 5.8: Sports Facilities and Amenities in Leixlip (indicative subject site indicated in red)

Source: Open Street Map and pobal.ie – annotated by Turley

Social Infrastructure Audit

Leixlip Demesne LRD - Lands located at Leixlip Demesne, Leixlip, Co. Kildare

Table 5.18: List of Sports Facilities and Amenities in Celbridge

No.	Name	Address	Type of Facility	Distance in km	Travelling Time by Car (min)
1	Celbridge Town AFC Senior Pitches	St Patrick's Park, Aghards, Celbridge	Sport Centre	5.1	9
2	B-Active Fitness Club	Donaghcumper, Co. Kildare	Gym	3.9	7
3	KAOS Gym	M4 Business Park, Crodaun, Celbridge	Gym	4.4	8
4	CrossFit Bua Celbridge	Unit C6, M4 Business Park, Celbridge	Gym	4.4	8
5	ServiceYourBody.ie	Unit 13 St Wolstans Shopping Centre, Dublin Rd, Celbridge	Gym	3.9	7
6	Celbridge Football Park	Dublin Rd, Ballyoulster, Celbridge	Soccer Club	2.6	5
7	Celbridge Athletic Club	8 Rockbridge, Celbridge Abbey, Celbridge	Athletic Club	6.1	10
8	Celbridge GAA Club	Hazelhatch Rd, Commons, Celbridge	GAA Club	4.7	8
9	Celbridge & District Tennis Club	Hazelhatch Rd, Loughlinstown, Celbridge	Tennis Club	5.5	8

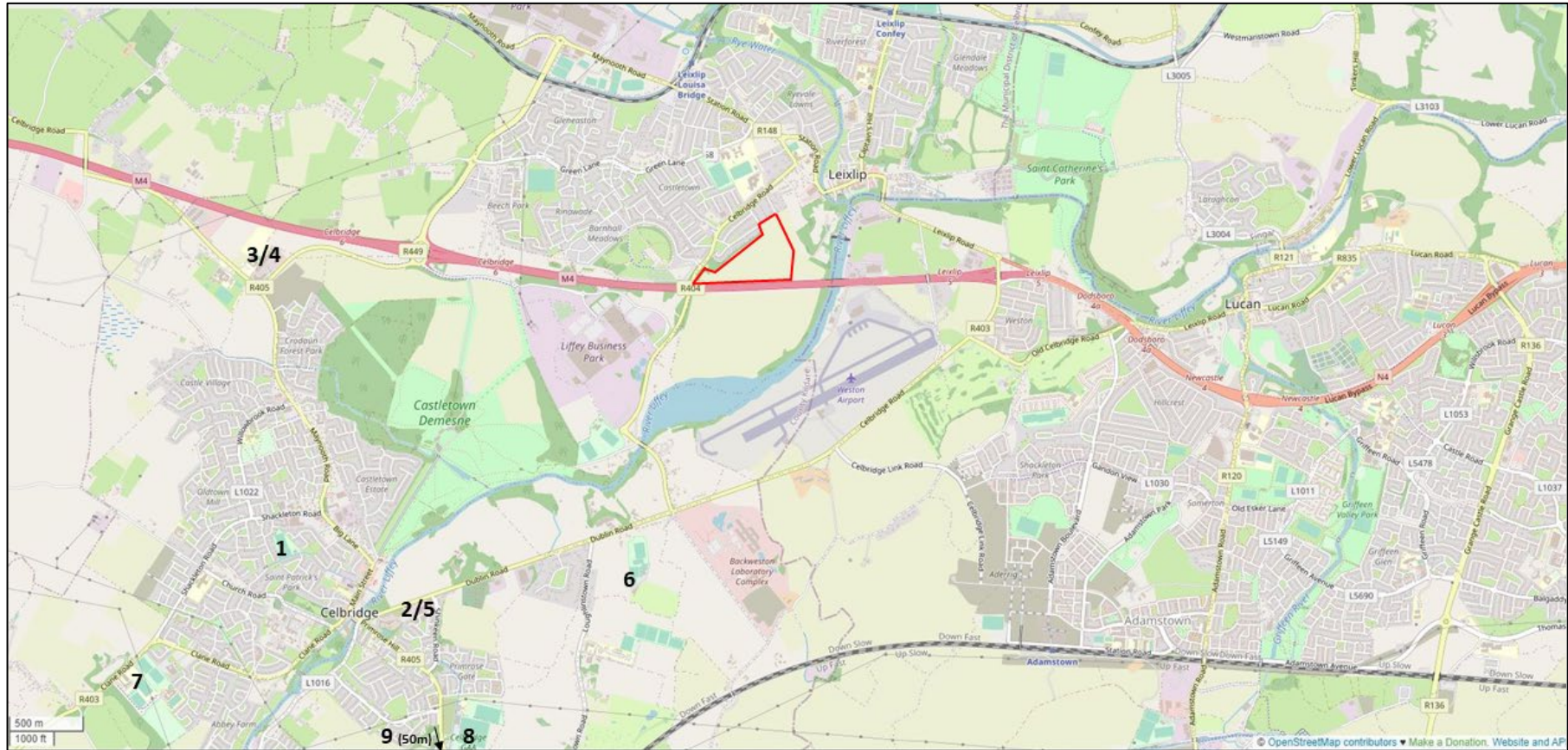


Table 5.19: List of Sports Facilities and Amenities in Lucan

No.	Name	Address	Type of Facility	Distance in km	Travelling Time by Car (min)
1	Lucan Sports & Leisure Centre	Griffeen Valley Park, Glebe, Lucan	Sports Centre	6.7	13
2	Esker Celtic	Ballydowd, Lucan	Sport Complex	7.8	13
3	Outdoor Gym	Glebe, Lucan	Gym	6.8	14
4	K78 Training	Haydens Ln, Adamstown, Lucan	Gym	7.1	13
5	Lucan Badminton Club	Coláiste Cois Life, Castle Rd, Glebe, Lucan	Badminton Club	7.7	15
6	Adamstown Community Centre	Station Rd, Adamstown, Lucan	Community Centre	6.6	12
7	Lucan Harriers	Newcastle Road, Lucan	Athletic Club	5.7	11
8	Lucan United	14 Airlie Heights, Doddsborough, Lucan	Soccer Club	6	10
9	Weston Hockey Club	Newcastle Rd, Griffeen Valley Park, Lucan	Hockey Club	5.7	11
10	Lucan Sarsfields GAA Club	12th Lock, Newcastle Rd, Ballymakailly, Lucan	GAA Club	7.5	14

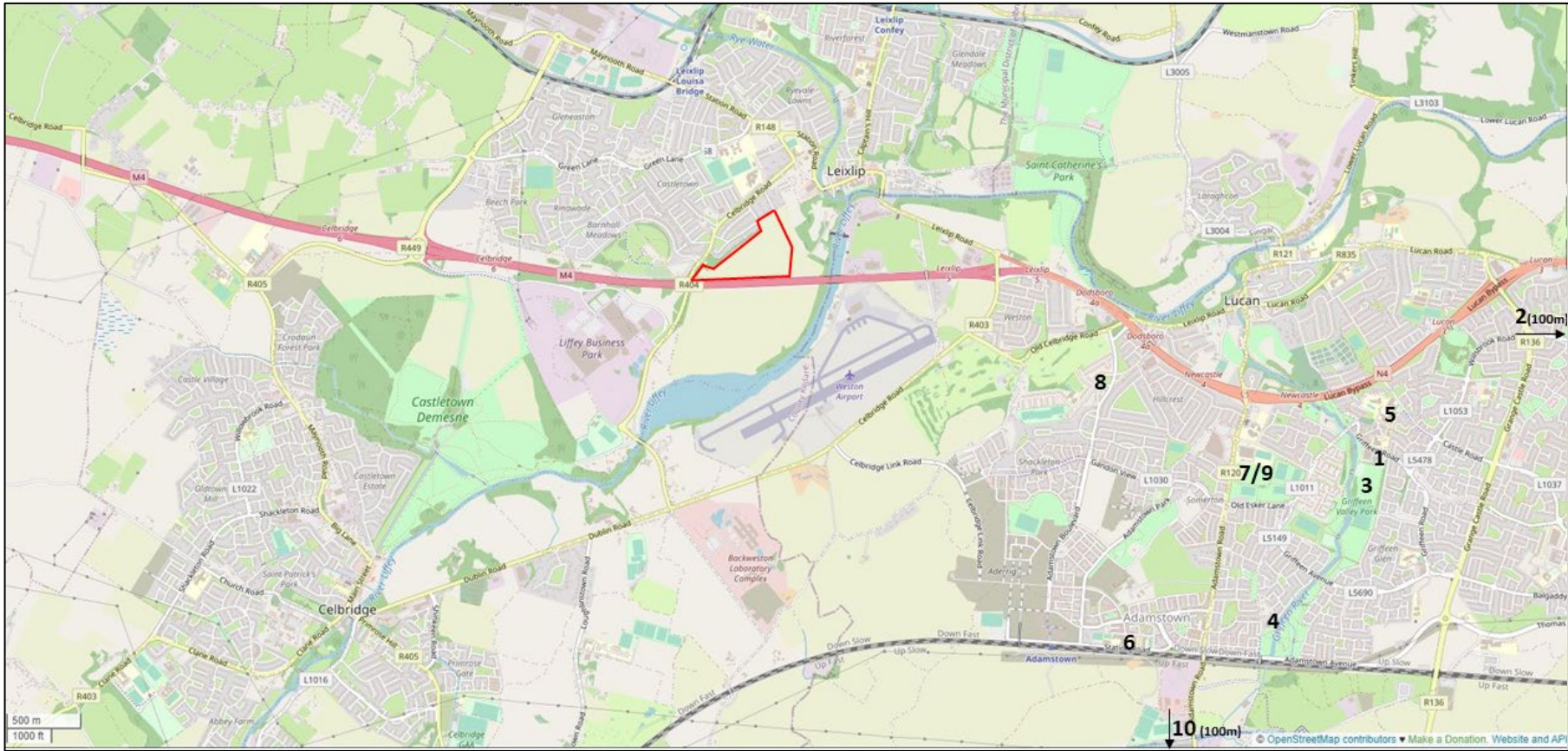


Figure 5.10: Sports Facilities and Amenities in Lucan (indicative subject site indicated in red)
 Source: Open Street Map and pobal.ie – annotated by Turley

Social Infrastructure Audit

Leixlip Demesne LRD - Lands located at Leixlip Demesne, Leixlip, Co. Kildare

5.4.2 Recreation Facilities and Amenities

In addition to the sports facilities and amenities identified in **Section 5.4.1**, a total of 29 no. outdoor recreation facilities and amenities were identified within the Study area (see **Table 5.20** and **Figure 5.11**).

The identified outdoor recreation facilities and amenities consist of:

- 15 no. Parks;
- 8 no. Playgrounds;
- 3 no. Walks; and
- 2 no. Gardens.

The locations of the outdoor recreation facilities and amenities are dispersed throughout the study area, with the parks being primarily located in Lucan.

Given the wide variety and number of recreation facilities and amenities located within the study area, it is considered that the proposed development will be serviced by this category.

Notwithstanding, it is highlighted that the majority of parks and playgrounds identified within the study area are located a minimum of c.2km away from the proposed development.

Therefore, any proposed development on the subject site should provide a strategic amenity area and a play equipment area(s) in accordance with the Leixlip LAP requirements.

Table 5.20: List of Outdoor Facilities and Amenities

No.	Name	Address	Type	Distance in km	Travelling Time by Car (min)
1	Leixlip Heritage Trail	9 Main St, Leixlip	Walk	1.9	5
2	Woodland Walk	Unnamed Road, Coldblow	Walk	6.6	12
3	Lucan Liffey Walking Trail	10 Chapel Hill, The Old Rectory, St. Edmondsbury, Lucan	Walk	6.9	12
4	Fairyvale	Ryevale Lawns, Leixlip	Garden	1.7	4
5	Castletown Biodiversity Garden	Castletown Farm, Castletown, Celbridge	Garden	4.8	10
6	Leixlip Waterfall	Newtown, Leixlip	Park	2	4
7	Leixlip Heritage Trail	9 Main St, Leixlip	Park	1.9	5
8	Enchanted Forest	Unnamed Road, Castletown, Celbridge	Park	4.8	10
9	Park	Willowbrook Lodge, Celbridge	Park	6.1	12
10	Celbridge Abbey Gardens	House, Celbridge Abbey, Celbridge	Park	4.5	9
11	Temple Mills House	Newtown Rd, Simmonstown, Celbridge	Park	5.2	9
12	St Catherine's Park	St Catherine's Park, Lucan	Park	7.1	14
13	Lucan Demesne	Lucan Demesne	Park	3.1	6
14	Liffey Valley Park	Lucan Demesne	Park	3.6	7
15	Laraghcon Park	Laraghcon, Lucan	Park	7.2	14

Social Infrastructure Audit

Leixlip Demesne LRD - Lands located at Leixlip Demesne, Leixlip, Co. Kildare

16	Lucan Village Park	The Manor, Main Street, Lucan	Park	6.3	10
17	Lucan Heights Green	102 Lucan Heights, Esker North, Lucan	Park	7.1	12
18	Esker Lawns Green	2 Esker Lawns, Esker North, Lucan	Park	6.9	11
19	Vesey Park	5 Vesey Park, Esker North, Lucan	Park	5.9	13
20	Willsbrook Park	67A Esker Park, Ballydowd, Lucan	Park	8.5	15
21	Griffeen Valley Park	Esker South, Lucan	Park	7.8	15
22	Playground	Leixlip Amenities, Easton	Playground	2.4	4
23	Playground St Catherine's Park	St Catherin's Park, Leixlip	Playground	7	14
24	Playground	Willowbrook Lodge, Celbridge	Playground	6.1	12
25	Playground	6 Newtown Rd, Celbridge Abbey, Celbridge	Playground	4.6	9
26	Tandy's Lane Park Playground	45 Somerton Ave, Finnstown, Lucan	Playground	5.9	11
27	Playground Griffeen Valley Park	Griffeen Valley, Lucan	Playground	6.8	14
28	Playground Hermitage Park	Yellow Walls, Lucan	Playground	7.8	13
29	Sarsfield Park Play Area	82 Sarsfield Park, Esker North, Lucan	Playground	6.9	12

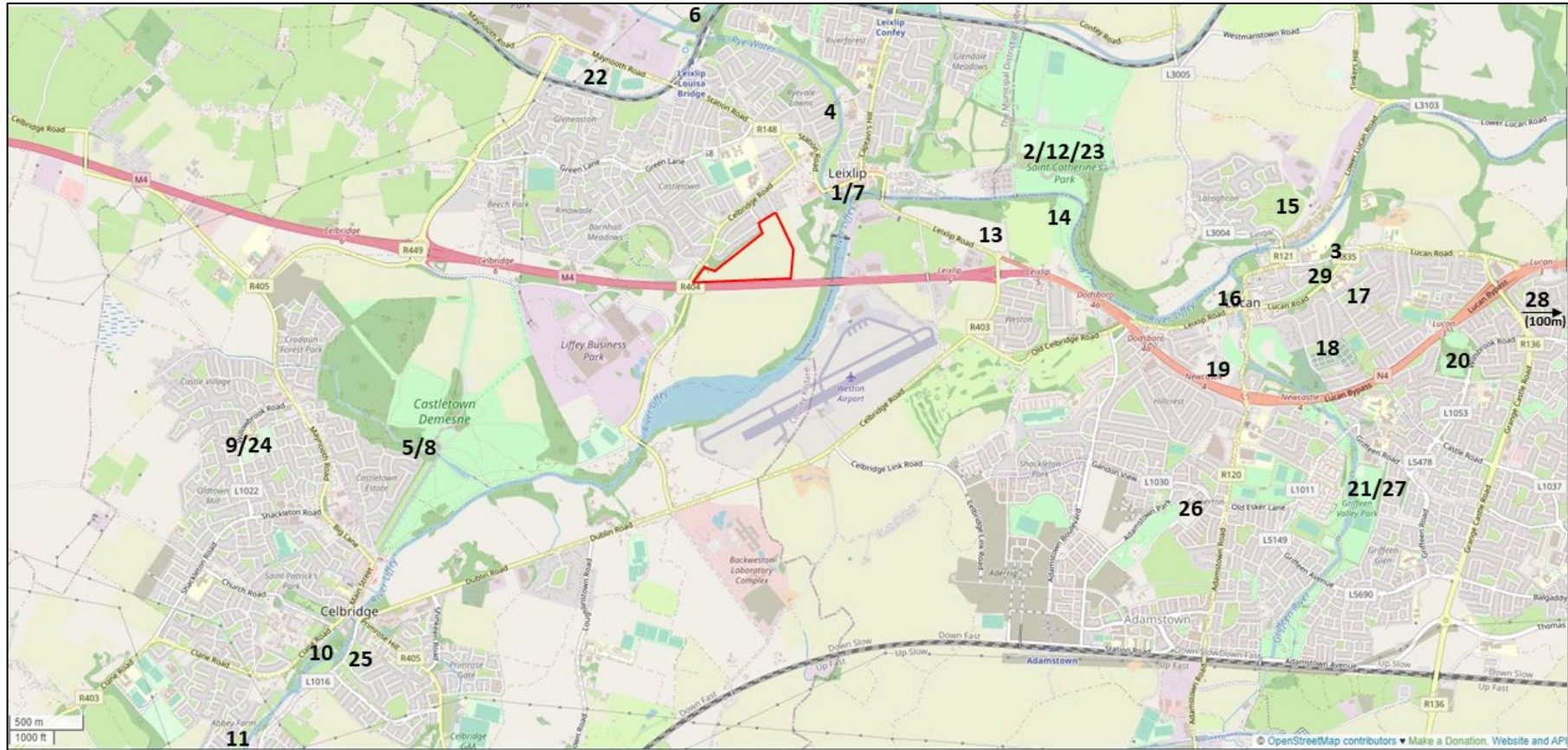


Figure 5.11: Outdoor Recreational Facilities and Amenities in Leixlip, Celbridge and Lucan (indicative subject site indicated in red)

Source: Open Street Map and pobal.ie – annotated by Turley

Social Infrastructure Audit

Leixlip Demesne LRD - Lands located at Leixlip Demesne, Leixlip, Co. Kildare

5.5 Social, Community and Commercial

Social facilities provide civil and other services that meet the needs and requirements of the community. Commercial facilities, such as shopping centres and hotels, provide leisure and social environments for the community and tourists.

A total of 38 no. social, community and commercial facilities were identified within the Study area (see **Table 5.21** and **Figure 5.12**).

The identified social, community and commercial facilities consist of:

- 8 no. Banks;
- 4 no. Post Offices;
- 4 no. Community Centres;
- 4 no. Hotels;
- 4 no. Train Stations;
- 3 no. Public Libraries;
- 3 no. Garda Stations;
- 3 no. Water Services;
- 3 no. Shopping Centre/ Shopping Mall
- 1 no. Fire Station; and
- 1 no. Charity.

Given the wide variety of social, community and commercial facilities located within the study area, it is considered that the proposed development will be sufficiently serviced by this category.

Table 5.21: List of Social Facilities and Amenities within the Study area

No.	Name	Address	Type of Facility	Distance in km	Travelling Time by Car (min)
1	AIB	Main St, Leixlip, Co. Kildare	Bank	2	6
2	Bank of Ireland	Captain's Hill, St. Catherine's Park, Leixlip	Bank	2	6
3	Ulster Bank	Main St, Donaghcumper, Celbridge	Bank	4.3	9
4	AIB	Main St, Donaghcumper, Celbridge	Bank	4.2	8
5	Celbridge District Credit Union	Main St, Donaghcumper, Celbridge	Bank	4.5	9
6	Lucan District Credit Union	Unit 5, Finnstown Shopping Centre, 5 Newcastle Rd, Finnstown, Lucan	Bank	4	6
7	AIB	1 Main St, Lucan	Bank	3.6	4
8	Ulster Bank	The Mall, Lower Main St, St. Edmondsbury, Lucan	Bank	4.1	7
9	Leixlip Library	Captain's Hill, Newtown, Leixlip	Public Library	3	7
10	Celbridge Library	St Patricks Park, Donaghcumper, Celbridge	Public Library	4.3	8
11	Lucan Library	Unit 33, Lucan Shopping Centre, Newcastle Rd, Lucan	Public Library	5.7	11
12	Leixlip Garda Station	Leixlip	Garda Station	1.6	4
13	Celbridge Garda Station	Maynooth Rd, Celbridge	Garda Station	5	9
14	Lucan Garda Station	Main St, Lucan	Garda Station	6.2	9

Social Infrastructure Audit

15	Leixlip Fire Station	Mill Ln, St. Catherine's Park, Leixlip	Fire Station	2.3	6
16	Leixlip Post Office	Leixlip Shopping Mall, Leixlip	Post Office	1.8	4
17	Post Office	Main St, Donaghcumper, Celbridge	Post Office	4.2	7
18	Post Office	Centra, 3/4 Lower Main St, Lucan	Post Office	6.2	9
19	An Post Newcastle Road Lucan	Unit 4, 5 Newcastle Rd, Lucan	Post Office	5.6	11
20	Leixlip Wastewater Treatment Plan	50 Leinster Rd, Leixlip	Water Services	2.8	7
21	Leixlip Drinking Water Treatment Plan	Lucan Demesne	Water Services	2.6	6
22	Veolia Water Technologies	Dublin Rd, St. Wolstans, Celbridge	Water Services	2.9	5
23	Breaking Through	Newtown House, Confey, Leixlip	Charity	2.9	6
24	Confey Community Centre	Newtown, Leixlip	Community Centre	2.9	6
25	The Mill – Celbridge Community Centre	English Row, Celbridge Abbey, Celbridge	Community Centre	4.3	7
26	Adamstown Community Centre	Station Rd, Adamstown, Lucan	Community Centre	6.4	11
27	Lucan Centre	Lucan Centre, Primrose Ln, Lucan	Conference Centre	6.4	9
28	The max	Aghards, Celbridge	Shopping Centre/ Shopping Mall	5.7	9
29	St Wolstan’s Shopping Centre	Donaghcumper, Celbridge	Shopping Centre/ Shopping Mall	4.1	7

Social Infrastructure Audit

30	Lucan Shopping Centre	Newcastle Rd, Finnstown, Lucan	Shopping Centre/ Shopping Mall	5.6	11
31	The Court Yard Hotel	Main St, Leixlip	Hotel	1.9	4
32	Leixlip Manor Hotel	St. Catherine's Park, Leixlip	Hotel	2.8	7
33	Springfield Hotel	Leixlip Rd, Lucan Demesne, Leixlip	Hotel	2.9	6
34	Lucan Spa Hotel Dublin	Junction 4A N4 Westbound, Lucan	Hotel	5.8	9
35	Leixlip Confey	Newtown, Leixlip	Train Station	3.1	7
36	Leixlip (Louisa Bridge)	Leixlip	Train Station	2	4
37	Hazelhatch and Celbridge	Straleek	Train Station	5.1	7
38	Adamstown	Station Road, Adamstown	Train Station	6.5	11

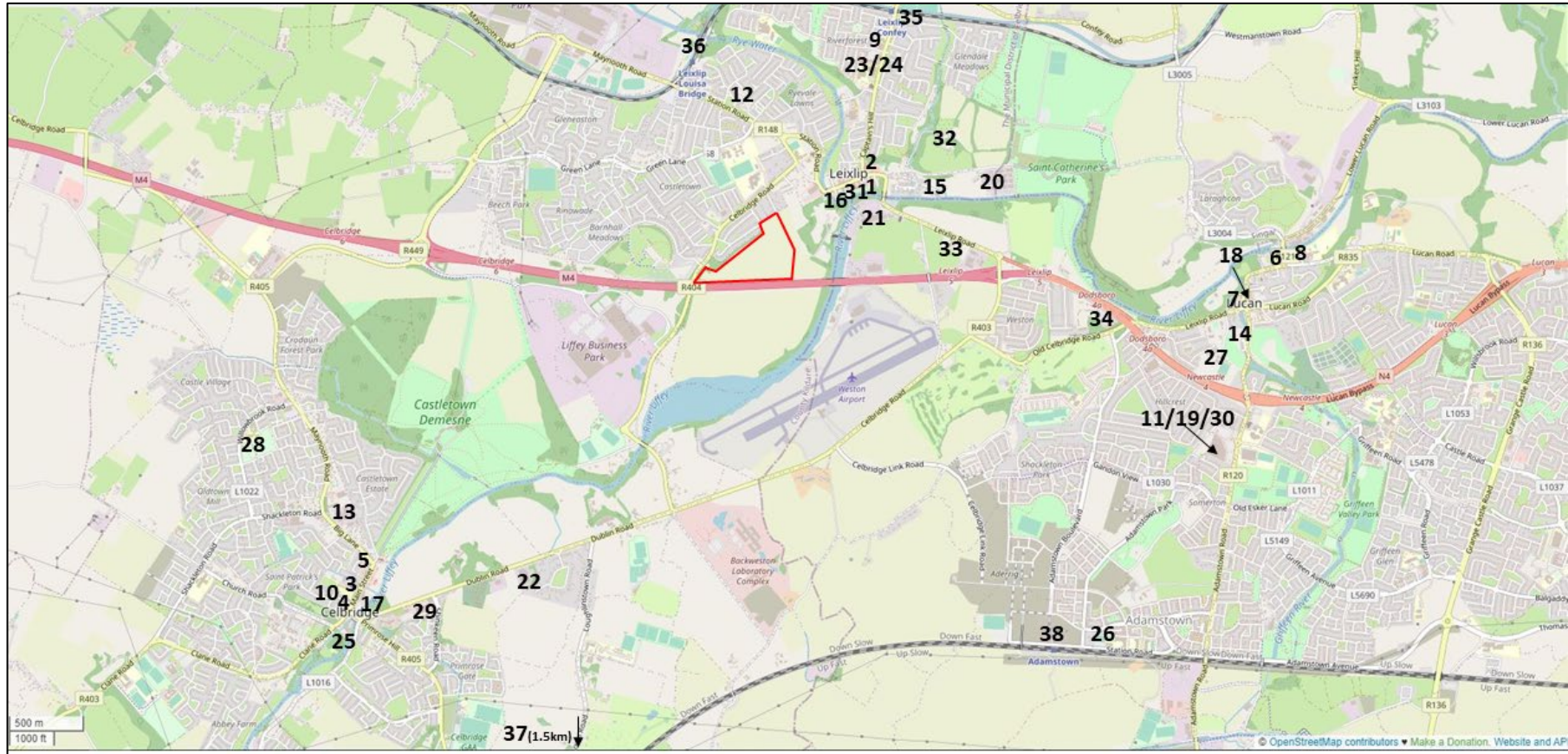


Figure 5.12: Location of Social, Community and Commercial within the Study Area (indicative subject site indicated in red)

Source: Open Street Map – Annotated by Turley

Social Infrastructure Audit

Leixlip Demesne LRD - Lands located at Leixlip Demesne, Leixlip, Co. Kildare

5.6 Arts and Culture

Leixlip is characterised by its natural and cultural assets, with Leixlip Castle and the Wonderful Barn playing a significant role in the town's identity.

A total of 5 no. arts and culture facilities and amenities were identified within the Study area (see **Table 5.22** and **Figure 5.13**). With regards to the arts, a total of 1 no. performing theatre was identified in the study area.

Given the established character and historic value of the area, it is considered that the proposed development will be sufficiently serviced by this category.

Table 5.22: List of Arts and Culture Structures, Facilities and Amenities

No.	Name	Address	Type	Distance in km	Travelling Time by Car (min)
1	Fairy Demesne	Unnamed Road Demesne, Lucan	Tourist Attraction	6.6	12
2	Old Toll House	7 Woodside, Newtown, Leixlip	Tourist Attraction	4	8
3	Leixlip Castle	Leixlip	Tourist Attraction	1.9	4
4	Castletown House & the Wonderful Barn	Celbridge Road Barnhall, Leixlip	Historical Landmark	0.5	1
5	Muse Academy	Newtown House, Leixlip Youth & Community Centre, Leixlip	Performing Art Theatre	3	6

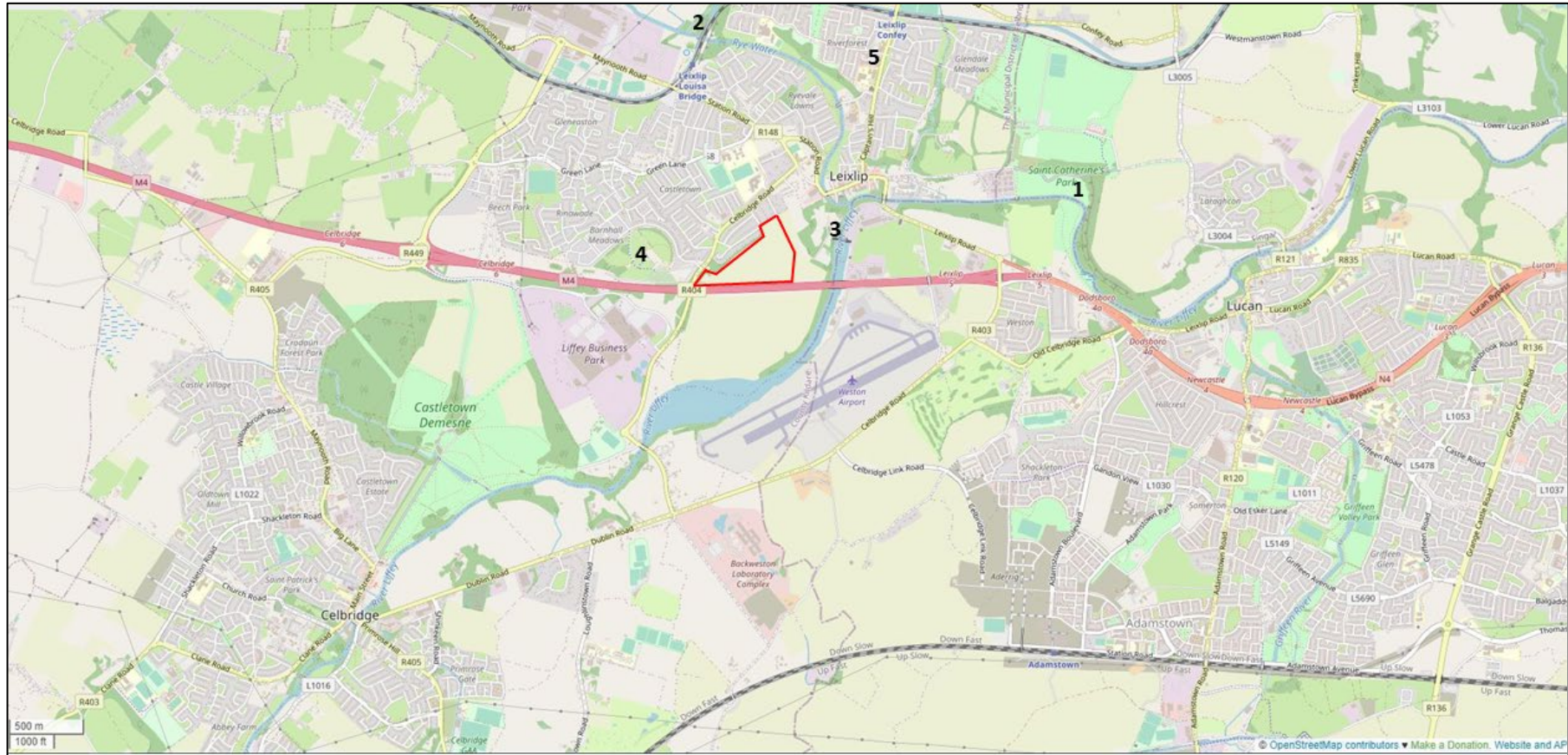


Figure 5.13: Location of Arts and Cultural Facilities and Amenities within the Study Area (indicative subject site indicated in red)

Source: Open Street Map – Annotated by Turley

Social Infrastructure Audit

Leixlip Demesne LRD - Lands located at Leixlip Demesne, Leixlip, Co. Kildare

5.7 Faith

A total of 18 no. faith facilities were identified within the study area, 4 no. of which are located within the Leixlip (see **Table 5.23** and **Figure 5.14**).

The faith facilities are primarily located in the centre of Leixlip, Celbridge and Lucan.

It is noted that no Islamic cultural facilities were identified with the Study area.

Given the number of faith facilities located within the study area, it is considered that the proposed development will be sufficiently serviced by this category.

Table 5.23: List of Faith Facilities within the Study area

No.	Name	Address	Type	Distance in km	Travelling Time by Car (min)
1	St Mary's Church of Ireland	Main St, Leixlip	Church	1.8	3
2	Church of Our Lady's Nativity	Old Hill, Leixlip	Church	1.4	3
3	St. Charles Borromeo Church	Captain's Hill, Newtown, Leixlip	Church	2.6	5
4	Christ Church	Castletown, Celbridge	Church	4.6	8
5	St Patrick's Catholic Church	Main St, Donaghcumper, Celbridge	Church	4.5	8

Social Infrastructure Audit

Leixlip Demesne LRD - Lands located at Leixlip Demesne, Leixlip, Co. Kildare

6	St Patrick's Catholic Church	St. Patrick's Church, Lucan	Church	5.4	9
7	Chinse Gospel Church	Esker House, Esker Rd, Glebe, Lucan	Church	6.4	11
8	Methodist Church	Dispensary Ln, Lucan	Church	6.3	10
9	Leixlip Union of Parishes	Main St, Lucan, Co. Dublin	Church	6.3	10
10	Lucan Presbyterian Church	4 Hanbury Ln, Main St, Lucan	Church	6.4	10
11	St Andrew's Church of Ireland	16 Main St, Lucan	Church	6.4	10
12	St Mary's Indian Orthodox Church	4 Hanbury Ln, Lucan	Church	6.4	10
13	Gospel Baptist Church	Unit 32, Hills Industrial Estate, Lower Lucan Rd, St. Edmondsbury, Lucan	Church	7	12
14	Parish of St Patricks	Newcastle Rd, Finnstown, Lucan	Church	5.8	10
15	St Mary's Church	Lucan Rd, St. Edmondsbury, Lucan	Church	7	11
16	Confey Graveyard	Newtown, Co. Kildare	Graveyard	3.4	7
17	Donaghcumper	Donacomper Cemetery, Celbridge	Graveyard	3.3	5
18	Esker Cemetery	Lucan-Newlands Rd, Esker North, Lucan	Graveyard	6.1	10

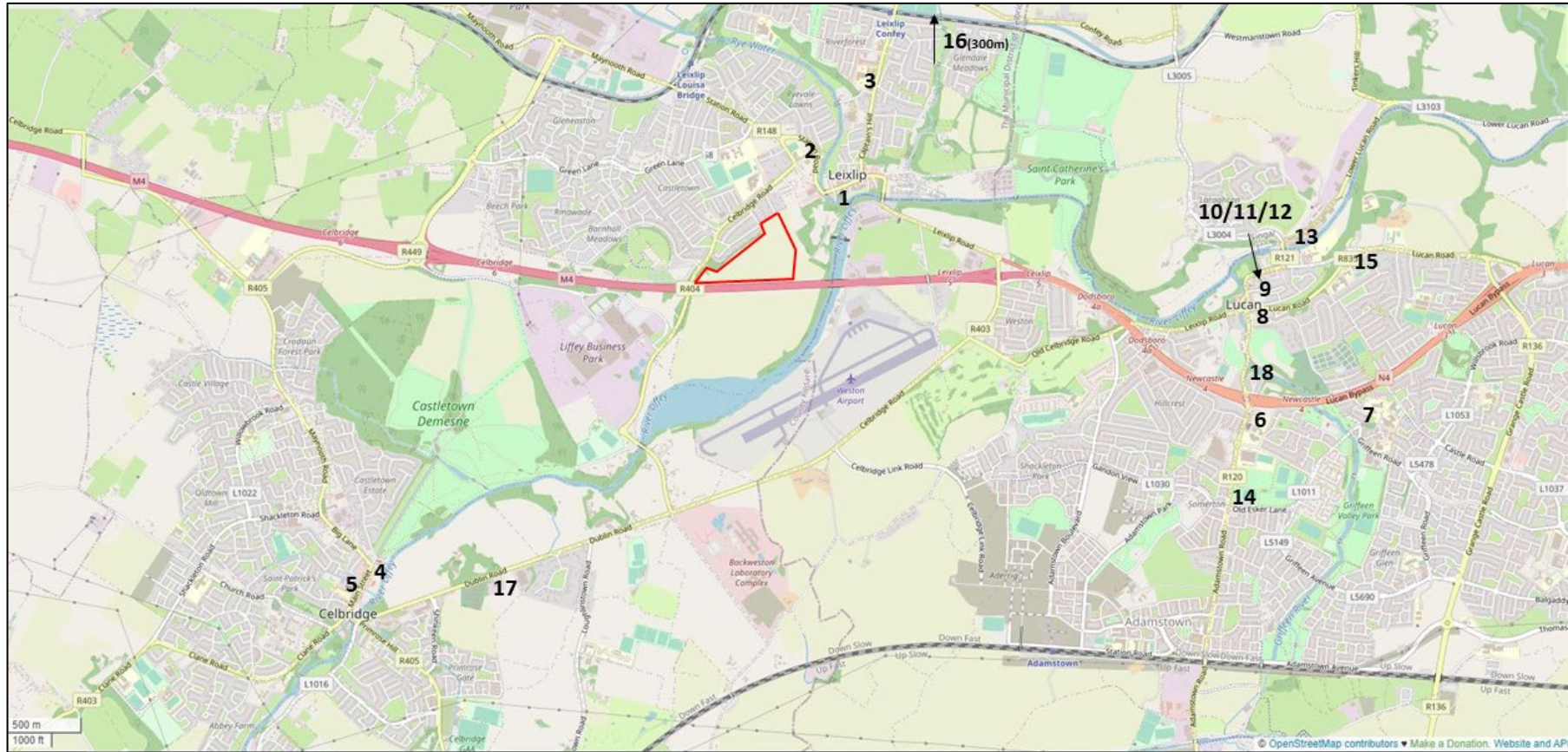


Figure 5.14: Location of Faith Facilities and Amenities within the Study Area (indicative subject site indicated in red)

Source: Open Street Map – Annotated by Turley

Social Infrastructure Audit

Leixlip Demesne LRD - Lands located at Leixlip Demesne, Leixlip, Co. Kildare

6. Conclusion

This SIA has identified and established the capability of the existing provision of social infrastructure within the study area to support the needs of the existing population and offered insights into the likelihood of the capacity of the existing services and facilities to support the future residents of the proposed development.

The SIA identified a significant range of services and facilities which contribute to quality of life within close proximity to the subject site. Overall, 288 social infrastructure services and facilities were identified within the study area; the largest area of which is childcare and education and training.

While an extensive provision of social infrastructure was identified, it is important to continually ensure good accessibility to quality services and facilities, inclusive of but not limited to health services and facilities, education facilities and community and sports and recreation facilities.

The proposed development will notably contribute to ensuring good accessibility to quality services and facilities by providing a crèche and a strategic amenity area with play equipment as part of the overall development.

Although the existing childcare facilities in the locality could accommodate the majority of the childcare demand generated by the proposed development, the proposal includes a crèche to meet the childcare demand generated by the proposed development.

In addition, the proposed development will provide for a playground, outdoor gym equipment and an informal playing field at the location identified in the Leixlip LAP. It is also highlighted to Louth CoCo that additional equipped play spaces will be provided throughout the subject site to facilitate the future residents of the development and surrounding area.

In conclusion, the proposed crèche and strategic amenity area, and existing social infrastructure provisions within close proximity to the subject site are capable of serving the future residents of the proposed development.

Turley

Glenveagh Homes Ltd.